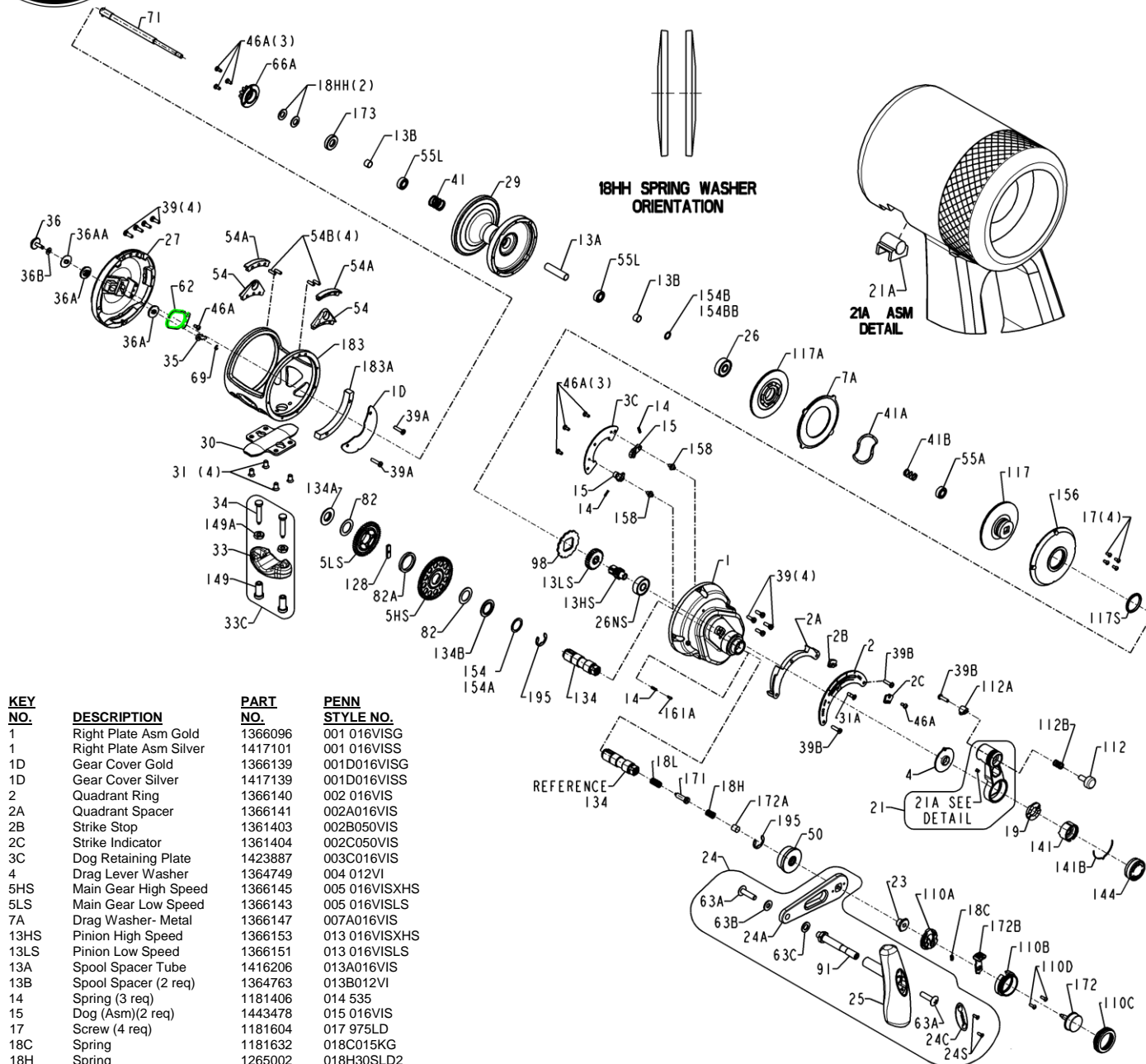




MODELS 16VISX, Gold, 1370777 and 16VISXS, Silver, 1419229



| KEY NO. | DESCRIPTION | PART NO. | PENN STYLE NO. |
|---------|------------------------|----------|----------------|
| 1 | Right Plate Asm Gold | 1366096 | 001 016VISG |
| 1 | Right Plate Asm Silver | 1417101 | 001 016VISS |
| 1D | Gear Cover Gold | 1366139 | 001D016VISG |
| 1D | Gear Cover Silver | 1417139 | 001D016VISS |
| 2 | Quadrant Ring | 1366140 | 002 016VIS |
| 2A | Quadrant Spacer | 1366141 | 002A016VIS |
| 2B | Strike Stop | 1361403 | 002B050VIS |
| 2C | Strike Indicator | 1361404 | 002C050VIS |
| 3C | Dog Retaining Plate | 1423887 | 003C016VIS |
| 4 | Drag Lever Washer | 1364749 | 004 012VI |
| 5HS | Main Gear High Speed | 1366145 | 005 016VISXHS |
| 5LS | Main Gear Low Speed | 1366143 | 005 016VISLS |
| 7A | Drag Washer- Metal | 1366147 | 007A016VIS |
| 13HS | Pinion High Speed | 1366153 | 013 016VISXHS |
| 13LS | Pinion Low Speed | 1366151 | 013 016VISLS |
| 13A | Spool Spacer Tube | 1416206 | 013A016VIS |
| 13B | Spool Spacer (2 req) | 1364763 | 013B012VI |
| 14 | Spring (3 req) | 1181406 | 014 535 |
| 15 | Dog (Asm)(2 req) | 1443478 | 015 016VIS |
| 17 | Screw (4 req) | 1181604 | 017 975LD |
| 18C | Spring | 1181632 | 018C015KG |
| 18H | Spring | 1265002 | 018H30SLD2 |
| 18HH | Spring Washer (2 req) | 1288188 | 018HTRQ40NLD2 |
| 18L | Spring | 1265003 | 018L30SLD2 |
| 19 | Drag Cam | 1415174 | 019 016VIS |
| 21 | Drag Lever Asm Gold | 1366155 | 021 016VISG |
| 21 | Drag Lever Asm Silver | 1417108 | 021 016VISS |
| 21A | Drag Lever Guide | 1361392 | 021A050VIS |

| KEY NO. | DESCRIPTION | PART NO. | PENN STYLE NO. |
|---------|-----------------|----------|----------------|
| 23 | Screw- Handle | 1361394 | 023 050VIS |
| 24 | Handle Assembly | 1457210 | 024 016VISX |
| 24A | Handle Arm | 1364771 | 024 016VIS-1 |
| 24C | Knob Cap | 1361267 | 024C016VIS |
| 24S | Screw (2 req) | 1362971 | 024S050VIS |

| KEY NO. | DESCRIPTION | PART NO. | PENN STYLE NO. |
|---------|---------------------------------|----------|----------------|
| 25 | Molded Knob | 1361269 | 025 016VIS |
| 26 | Ball Bearing (Spool) | 1364772 | 026 016VIS |
| 26NS | Ball Bearing (Right Side) | 1435256 | 026NS025 |
| 27 | Left Side Plate Gold | 1366158 | 027 016VISG |
| 27 | Left Side Plate Silver | 1417102 | 027 016VISS |
| 29 | Spool Gold | 1366160 | 029 016VISG |
| 29 | Spool Silver | 1436649 | 029 016VISS |
| 30 | Stand | 1182599 | 030 016VS |
| 31 | Screw- Stand (4 req) | 1191562 | 031 016VS |
| 31A | Screw- Center Quadrant | 1361407 | 031 050VIS |
| 33 | Rod Clamp- Silver | 1365544 | 033 TRQS |
| 33C | Rod Clamp Silver Kit | 1457209 | 033C012VIS |
| 34 | Screw- Rod Clamp (2 req) | 1182786 | 034 016VS |
| 35 | Pawl | 1188656 | 035 20 |
| 36 | Button | 1381335 | 036 016VIS |
| 36A | Bushing (2 req) | 1440378 | 036A016VIS |
| 36AA | Washer | 1309883 | 036AFTH40NLD2 |
| 36B | Washer | 1188651 | 036B20 |
| 39 | Screw W/Collar(8 req) | 1366162 | 039 012VSXN |
| 39A | Screw (Frame) (2 req) | 1229975 | 039 012VSX |
| 39B | Screw (3 req) | 1361411 | 039 050VIS |
| 41 | Spring- Left Side Spool | 1364782 | 041 012VI |
| 41A | Spring- Drag (Wave) | 1364783 | 041A012VI |
| 41B | Spring- Drive Plate Separating | 1364784 | 041B012VI |
| 46A | Screw- PH SS (8 req) | 1183585 | 046A4300 |
| 50 | Gear Stud Shield | 1375470 | 050 016VISS |
| 54 | Harness Lug (2 req) | 1366163 | 054 016VIS |
| 54A | Harness Plug(2 req) | 1366164 | 054A016VIS |
| 54B | Dowel Pin (4 req) | 1361422 | 054B050VIS |
| 55A | Bearing- Drive Plate | 1238912 | 055A050SLD |
| 55L | Bearing Spool (2 req) | 1286985 | 055L020 |
| 62 | Spring | 1188664 | 062 20 |
| 63A | Screw (Handle)(2 req) | 1233968 | 063A012VS |
| 63B | Washer- Handle Screw | 1354421 | 063B016VIS |
| 63C | Washer- Handle Rivet | 1361297 | 063C016VIS |
| 66A | Ratchet (Spool) | 1265059 | 066AFTHLD |
| 69 | E-Clip Retainer | 1188657 | 069 20 |
| 71 | Spindle Assembly | 1366165 | 071 016VIS |
| 82 | Washer (2 req) | 1265070 | 082 TRQ40NLD2 |
| 82A | Washer- Gear Separating | 1265071 | 082A30SLD2 |
| 91 | Handle Rivet | 1364794 | 091 016VIS |
| 98 | Anti-Reverse Ratchet | 1364797 | 098 012VIS |
| 110A | Shift Button Base | 1360907 | 110A050VIS |
| 110B | Shift Button Body | 1360908 | 110B050VIS |
| 110C | Shift Button Retainer Ring | 1362945 | 110C030VIS |
| 110D | Screw (2 req) | 1361350 | 110D050VIS |
| 112 | Strike Button | 1361351 | 112 050VIS |
| 112A | Strike Gate | 1361352 | 112A050VIS |
| 112B | Spring (Strike Button) | 1361353 | 112B050VIS |
| 117 | Drive Plate Asm- Outer | 1366167 | 117 016VIS |
| 117A | Drive Plate Asm- Inner | 1366169 | 117A016VIS |
| 117S | Drag Cover Seal | 1265080 | 117STRQ40NLD2 |
| 128 | Shift Key | 1265084 | 128 30SLD2 |
| 134 | Gear Stud | 1375471 | 134 016VIS |
| 134A | Nut- Gear Stud | 1265086 | 134A30SLD2 |
| 134B | Spacer- Gear | 1265087 | 134B30SLD2 |
| 141 | Cam Follower | 1265088 | 141 TRQ15LD2 |
| 141B | Preset Knob Click Spring | 1265089 | 141BTRQ15LD2 |
| 144 | Preset Knob | 1364804 | 144 012VI |
| 149 | Clamp Nut (2 req) | 1184702 | 149 045 |
| 149A | Hex Nut (2 req) | 1184706 | 149 200 |
| 154 | Gear Shim .010in (as required) | 1265092 | 154 TRQ40NLD2 |
| 154A | Gear Shim .004in (as required) | 1306668 | 154ATRQ40NLD2 |
| 154B | Spool Shim .012in (as required) | 1309903 | 154BFTH25NLD2 |
| 154BB | Spool Shim .008in(as required) | 1309904 | 154BFTH40NLD2 |
| 156 | Drag Cover | 1366171 | 156 016VIS |
| 158 | Dog Pin (2 req) | 1361374 | 158 050VIS |
| 161A | Click Pin (Right Side) | 1265098 | 161ATRQ15LD2 |
| 171 | Shift Plunger (Screw) | 1265101 | 171 30SLD2 |
| 172 | Shift Button (Asm) | 1362958 | 172 030VIS |
| 172A | Spacer | 1184827 | 172A050VS |
| 172B | Shift Latch (Molded) | 1389390 | 172B070VIS |
| 173 | Bearing Retainer (Spool) | 1416208 | 173 016VIS |
| 183 | Frame Gold | 1366173 | 183 016VISXG |
| 183 | Frame Silver | 1417105 | 183 016VISXS |
| 183A | Frame Extension Gold | 1366174 | 183A016VISG |
| 183A | Frame Extension Silver | 1417106 | 183A016VISS |
| 195 | Retaining Ring (2 req) | 1184955 | 195 040 |