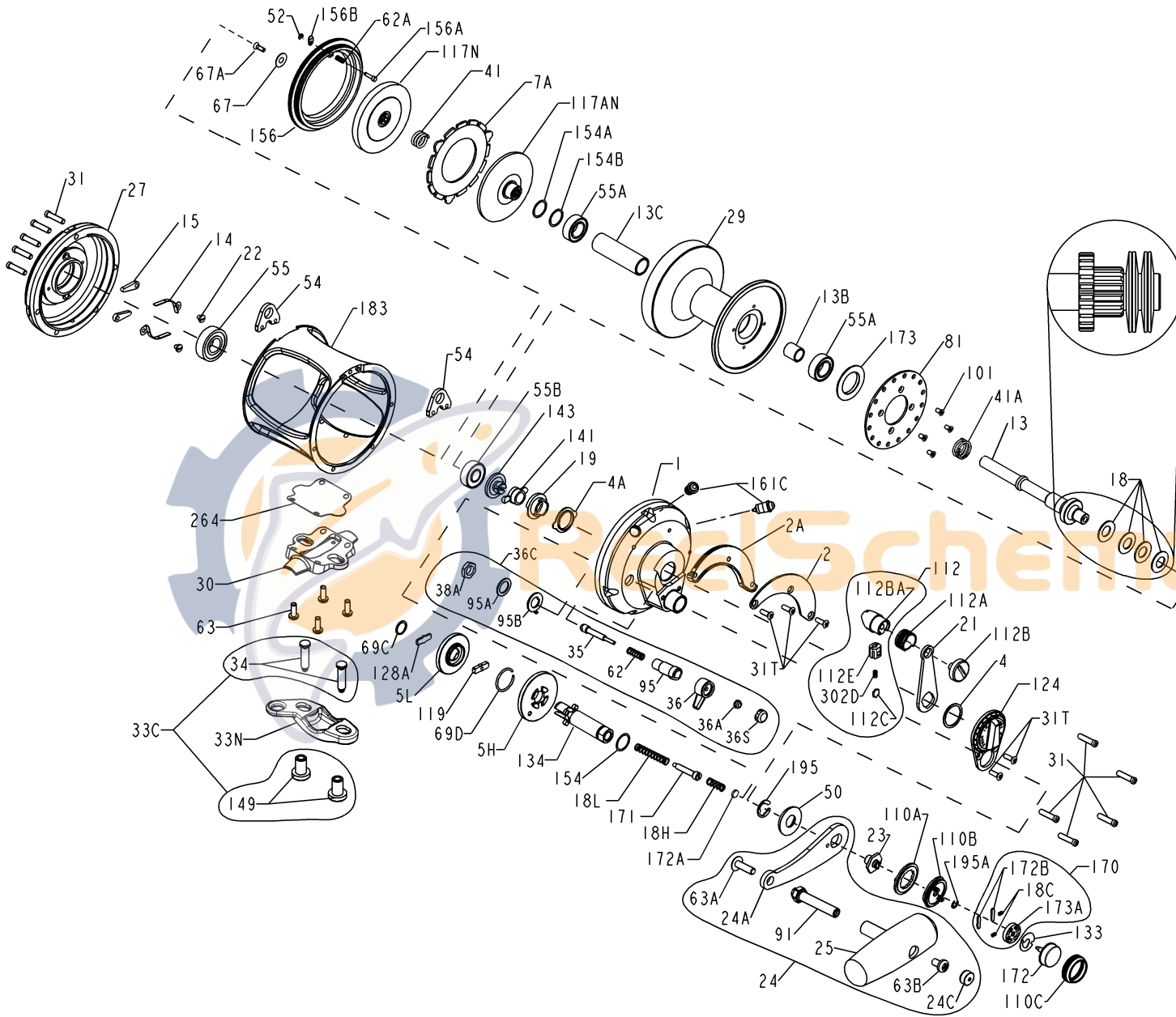




**PARTS LIST FOR MODEL 30VSW REEL NO: 1151030**



KEY NO.	DESCRIPTION	PART NO.	KEY NO.	DESCRIPTION	PART NO.	KEY NO.	DESCRIPTION	PART NO.
23	23-30VS Handle Screw	1181933	7A	7A-30VS Metal Drag Washer	1181032	18	18-30 Disc Spring (4 req.)	1181610
24	24-30VS Handle Assembly	1181972	13	13-30VSW Pinion Gear	1181290	18C	18C-15KG Catch Spring (2 req)	1181632
24A	24-30VS-1 Handle Blank	1205614	13B	13B-70 Pinion Gear Sleeve	1181371	18H	18H-30VS Shift Spring (Heavy)	1181634
24C	24C-50M Handle Knob Cap	1191334	13C	13B-30VSW Spool Sleeve	1181367	18L	18L-30VS Shift Spring (Light)	1181637
25	25S-50M Knob Assembly	1206009	14	14-16S Dog Spring (2 req.)	1181388	19	19-30VS Eccentric Cam	1181643
27	27-30VS Left Side Plate-Assembly	1182159	15	15-50 Dog (2 req.)	1181425	21	21-30VS Eccentric Lever	1181828
29	29L-30VSW Spool Assembly	1182487				22	22-109 Dog Spring Screw (2 req.)	1181912
30	30-30VS Stand	1191551						
31	31-80VS Side Plate Screw (10 req)	1191564						
31T	31T-70 Short Screw (5 req)	1182700						
33C	33C-70VS Screw & Nut Kit	1182770						
33N	33N-70 Rod Clamp	1191619						
34	34-70VS Clamp Screw (2 req)	1182792						
35	35-70 Click Tongue	1182902						
36	36N-50 Click Lever	1183047						
36A	36-700 Click Lever Nut	1183014						
36C	36C-30VSW Click Assembly Kit	1191712						
36S	36S-80ST Click Lever Cap	1183051						
38A	38-710 Click Bushing Nut	1183157						
41	41-25FR Spring	1183332						
41A	41-70 Drag Spring	1183328						
50	50-50VS Shield	1191966						
52	52-910 Retaining Ring	1183840						
54	54-30T Harness Lug (2 req)	1183852						
55	55-80 L.S. Ball Bearing	1183878						
55A	55-80ST Spool Ball Bearing (2 req)	1183879						
55B	20-704 R.S. Ball Bearing	1181790						
62	62-50 Click Spring	1184022						
62A	62-54S Drag Cover Lock Spring	1184029						
63	63-30T Stand Screw (4 req)	1184045						
63A	63A-50 Handle Rivet Screw	1184056						
63B	63-50 Knob Screw	1184046						
67	67-70 Pinion Retaining Washer	1184106						
67A	67A-70 Pinion Retaining Screw	1184111						
69C	195-24KG Retaining Ring	1184954						
69D	69C-24S Retaining Ring	1184133						
81	81-50 Click Ratchet Plate	1184204						
91	91S-50 Handle Rivet	1206011						
95	95-70 Click Bushing	1184307						
95A	95A-20 Serrated Click Washer	1184310						
95B	95A-50 Tab Click Washer	1184311						
101	101-30 Ratchet Screw (4 req)	1184403						
110A	110A-30VS Shifter Ring	1184440						
110B	110B-30VS Shifter Base	1184446						
110C	110C-30VS Shifter Button Retainer	1184447						
112	112-30VS Lever Knob Assembly	1184456						
112A	112A-30VS Knob Sleeve	1184460						
112B	112B-70 Drag Knob Screw	1184464						
112BA	112B-30VS Drag Lever Knob	1192711						
112C	112C-30VS Drag Click Plate	1192712						
112E	112E-30VS Drag Click Plate Housing	1192713						
117AN	117AN-50S Inner Drive Plate	1184495						
117N	117N-50S Outer Drive Plate	1184507						
119	119-24KG Shift Plate	1184515						
124	124L-30VS Bridge Cover Assembly	1184548						
128A	128A-24KG Drive Plate	1184566						
133	133-30VS Retaining Plate	1184602						
134	134-30VS Gear Stud	1184613						
141	141-30VS Cam Follower	1184652						
143	143-16VS Preset Screw	1184670						
149	149-70 Rod Clamp Nut (2 req)	1184703						
154	154-80 Shim- Gear Stud	1184719						
154A	154-80 Shim- Spool (as required)	1184719						
154B	154-80-5 Shim- Spool (as required)	1253919						
156	156-30VS Drag Cover	1184736						
156A	156A-30VS Drag Cover Lock Pin	1184752						
156B	156B-30VS Drag Cover Lock Plate	1184756						
161C	161C-30VSW Locating Pin Asm (2 req)	1192369						
170	170-30VS Catch Assembly	1184809						
171	171-30VS Shift Plunger	1184813						
172	172N-30VS Shift Button	1226062						
172A	172B-30VS Shifter Spacer	1184831						
172B	173-30VS Shifter Catch Plate (2 req)	1184835						
173	173-50VS Spool Bearing Retainer	1184838						
173A	173A-30VS Shifter Catch Housing	1184848						
183	183N-30VSW Tube Frame Asm	1205615						
195	195-40 Gear Stud Retaining Ring	1184955						
195A	67-30VS Shifter Retaining Ring	1184105						
264	264-30VS Stand Gasket	1192542						
302D	302D-525MAG Drag Click Plate Spring	1185255						

KEY NO.	DESCRIPTION	PART NO.
1	1-30VS R.S. Plate Assembly	1180415
2	2-30VS Quadrant Ring	1180592
2A	2A-30VS Quadrant Spacer	1180655
4	4-12LT Thrust Washer	1180748
4A	4-30VS Cam Bushing	1180752
5H	5-30VSHS Main Gear (High)	1180815
5L	5-30VSL Main Gear (Low)	1180816

KEY NO.	DESCRIPTION	PART NO.
7A	7A-30VS Metal Drag Washer	1181032
13	13-30VSW Pinion Gear	1181290
13B	13B-70 Pinion Gear Sleeve	1181371
13C	13B-30VSW Spool Sleeve	1181367
14	14-16S Dog Spring (2 req.)	1181388
15	15-50 Dog (2 req.)	1181425

KEY NO.	DESCRIPTION	PART NO.
18	18-30 Disc Spring (4 req.)	1181610
18C	18C-15KG Catch Spring (2 req)	1181632
18H	18H-30VS Shift Spring (Heavy)	1181634
18L	18L-30VS Shift Spring (Light)	1181637
19	19-30VS Eccentric Cam	1181643
21	21-30VS Eccentric Lever	1181828
22	22-109 Dog Spring Screw (2 req.)	1181912