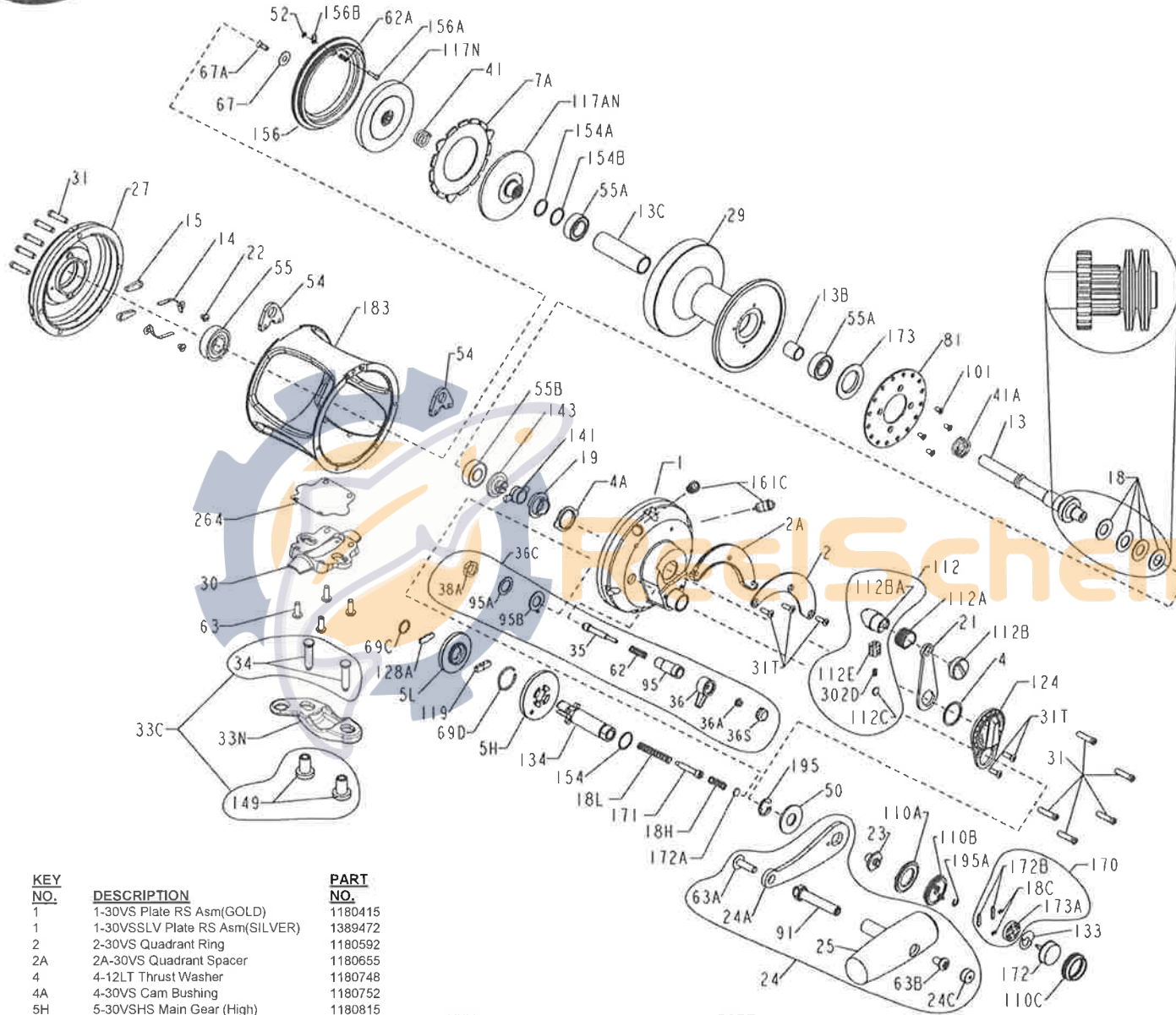




**PARTS FOR MODELS 30VSW, 1151030 (GOLD) & 30VSW, 1385485 (SILVER)**



KEY NO.	DESCRIPTION	PART NO.
1	1-30VS Plate RS Asm(GOLD)	1180415
1	1-30VSSLV Plate RS Asm(SILVER)	1389472
2	2-30VS Quadrant Ring	1180592
2A	2A-30VS Quadrant Spacer	1180655
4	4-12LT Thrust Washer	1180748
4A	4-30VS Cam Bushing	1180752
5H	5-30VSHS Main Gear (High)	1180815
5L	5-30VSL Main Gear (Low)	1180816
7A	7A-30VS Metal Drag Washer	1181032
13	13-30VSW Pinion Gear	1181290
13B	13B-70 Pinion Gear Sleeve	1181371
13C	13B-30VSW Spool Sleeve	1181367

KEY NO.	DESCRIPTION	PART NO.
14	14-16S Dog Spring (2 req.)	1181388
15	15-50 Dog (2 req.)	1181425
18	18-30 Disc Spring (4 req.)	1181610
18C	18C-15KG Catch Spring (2 req)	1181632
18H	18H-30VS Shift Spring (Heavy)	1181634
18L	18L-30VS Shift Spring (Light)	1181637
19	19-30VS Eccentric Cam	1181643
21	21-30VS Eccentric Lever	1181828
22	22-109 Dog Spring Screw (2 req.)	1181912

KEY NO.	DESCRIPTION	PART NO.
23	23-30VS Handle Screw	1181933
24	24-30VS Handle Assembly	1181972
24A	24-30VS-1 Handle Blank	1205614
24C	24C-50M Handle Knob Cap	1191334
25	25S-50M Knob Assembly	1206009
27	27-30VS Plate LS Asm(GOLD)	1182159
27	27-30VSSLV Plate LS Asm(SILVER)	1390195

KEY NO.	DESCRIPTION	PART NO.
29	29L-30VSW Spool Asm (GOLD)	1182487
29	29L-30VSWSLV Spool Asm (SILVER)	1389488
30	30-30VS Stand	1191551
31	31-80VS Side Plate Screw (10 req)	1191564
31T	31T-70 Short Screw (5 req)	1182700
33C	33C-70VS Screw & Nut Kit	1182770
33N	33N-70 Rod Clamp	1191619
34	34-70VS Clamp Screw (2 req)	1182792
35	35-70 Click Tongue	1182902
36	36N-50 Click Lever	1183047
36A	36-700 Click Lever Nut	1183014
36C	36C-30VSW Click Assembly Kit	1191712
36S	36S-80ST Click Lever Cap	1183051
38A	38-710 Click Bushing Nut	1183157
41	41-25FR Spring	1183332
41A	41-70 Drag Spring	1183328
50	50-50VS Shield	1191966
52	52-910 Retaining Ring	1183840
54	54-30T Harness Lug (2 req)	1183852
55	55-80 L.S. Ball Bearing	1183878
55A	55-80ST Spool Ball Bearing (2 req)	1183879
55B	20-704 R.S. Ball Bearing	1181790
62	62-50 Click Spring	1184022
62A	62-54S Drag Cover Lock Spring	1184029
63	63-30T Stand Screw (4 req)	1184045
63A	63A-50 Handle Rivet Screw	1184056
63B	63-50 Knob Screw	1184046
67	67-70 Pinion Retaining Washer	1184106
67A	67A-70 Pinion Retaining Screw	1184111
69C	195-24KG Retaining Ring	1184954
69D	69C-245 Retaining Ring	1184133
81	81-50 Click Ratchet Plate	1184204
91	91S-50 Handle Rivet	1206011
95	95-70 Click Bushing	1184307
95A	95A-20 Serrated Click Washer	1184310
95B	95A-50 Tab Click Washer	1184311
101	101-30 Ratchet Screw (4 req)	1184403
110A	110A-30VS Shifter Ring	1184440
110B	110B-30VS Shifter Base	1184446
110C	110C-30VS Shifter Button Retainer	1184447
112	112-30VS Ecc Knob Asm(GOLD)	1184456
112	112-30VSSLV Ecc Knob Asm(SILVER)	1390201
112A	112A-30VS Knob Sleeve	1184460
112B	112B-70 Drag Knob Screw(GOLD)	1184464
112B	112B-70SLV Drag Knob Screw(SILVER)	1389498
112BA	112B-30VS Drag Knob (GOLD)	1192711
112BA	112B-30VSSLV Drag Knob (SILVER)	1389497
112C	112C-30VS Drag Click Plate	1192712
112E	112E-30VS Drag Click Plate Housing	1192713
117AN	117AN-50S Inner Drive Plate	1184495
117N	117N-50S Outer Drive Plate	1184507
119	119-24KG Shift Plate	1184515
124	124L-30VS Bridge Cover Assembly	1184548
128A	128A-24KG Drive Plate	1184566
133	133-30VS Retaining Plate	1184602
134	134-30VS Gear Stud	1184613
141	141-30VS Cam Follower	1184652
143	143-16VS Preset Screw	1184670
149	149-70 Rod Clamp Nut (2 req)	1184703
154	154-80 Shim- Gear Stud	1184719
154A	154-80 Shim- Spool (as required)	1184719
154B	154-80-5 Shim- Spool (as required)	1253919
156	156-30VS Drag Cover	1184736
156A	156A-30VS Drag Cover Lock Pin	1184752
156B	156B-30VS Drag Cover Lock Plate	1184756
161C	161C-30VSW Locating Pin Asm (2 req)	1192369
170	170-30VS Catch Assembly	1184809
171	171-30VS Shift Plunger	1184813
172	172N-30VS Shift Button	1226062
172A	172B-30VS Shifter Spacer	1184831
172B	173-30VS Shifter Catch Plate (2 req)	1184835
173	173-50VS Spool Bearing Retainer	1184838
173A	173A-30VS Shifter Catch Housing	1184848
183	183N-30VSW Frame(GOLD)	1205615
183	183N-30VSWSLV Frame(SILVER)	1390203
195	195-40 Gear Stud Retaining Ring	1184955
195A	67-30VS Shifter Retaining Ring	1184105
264	264-30VS Stand Gasket	1192542
302D	302D-525MAG Drag Click Plate Spring	1185255