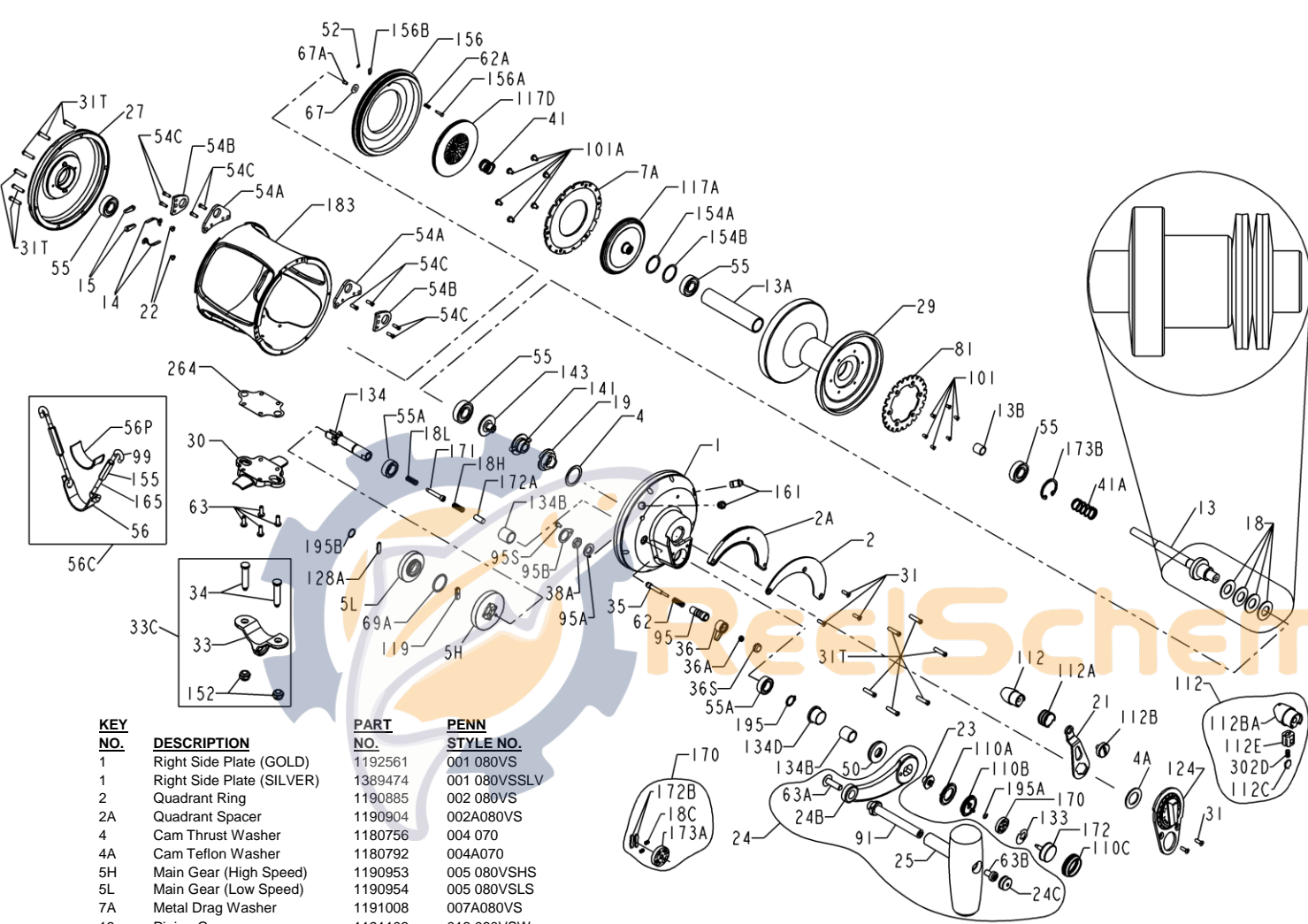




MODELS 80VSW, 1151038 (GOLD) & 80VSW, 1385488 (SILVER)



KEY NO.	DESCRIPTION	PART NO.	PENN STYLE NO.
1	Right Side Plate (GOLD)	1192561	001 080VS
1	Right Side Plate (SILVER)	1389474	001 080VSSLV
2	Quadrant Ring	1190885	002 080VS
2A	Quadrant Spacer	1190904	002A080VS
4	Cam Thrust Washer	1180756	004 070
4A	Cam Teflon Washer	1180792	004A070
5H	Main Gear (High Speed)	1190953	005 080VSHS
5L	Main Gear (Low Speed)	1190954	005 080VLS
7A	Metal Drag Washer	1191008	007A080VS
13	Pinion Gear	1191103	013 080VSW
13A	Spool Sleeve	1191126	013B080VSW
13B	Pinion Gear Sleeve	1181371	013B070
14	Dog Spring (2 req.)	1181391	014 050
15	Dog (2 req.)	1181425	015 050
18	Disc Clutch Spring (4 req.)	1181617	018 080W
18C	Shift Catch Spring (2 req.)	1181632	018C015KG
18H	Shift Spring (Heavy)	1181634	018H030VS
18L	Shift Spring (Light)	1181637	018L030VS
19	Eccentric Cam	1181649	019 070
21	Eccentric Lever	1192626	021 080VS
22	Dog Spring Screw (2 req.)	1181912	022 109
23	Handle Screw	1181933	023 030VS
24	Handle Complete	1181982	024 080VS
24B	Handle Blank	1223798	024 080VS-1
24C	Handle Knob Cap	1191336	024C080ST
25	Handle Knob Assembly	1224726	025 080STM
27	LS Plate Asm (GOLD)	1191381	027 080VS
27	LS Plate Asm (SILVER)	1390199	027 080VSSLV

KEY NO.	DESCRIPTION	PART NO.	PENN STYLE NO.
29	Spool Assembly (GOLD)	1191534	029L080VSW
29	Spool Assembly (SILVER)	1389492	029L080VSWSLV
30	Stand	1191553	030 080VS
31	Short Screw (5 req.)	1182700	031T070
31T	Side Plate Screw (12 req.)	1191564	031 080VS
33	Rod Clamp	1182758	033 130ST
33C	Rod Clamp Kit	1191607	033C080VS
34	Clamp Screw (2 req.)	1191621	034 080VS
35	Click Tongue	1182918	035 130SN
36	Click Button	1183047	036N050
36A	Click Button Nut	1183014	036 700
36S	Click Button Cap	1183051	036S080ST
38A	Click Bushing Nut	1183157	038 710
41	Bearing Spring	1183325	041 050
41A	Drag Spring	1191788	041 080VS
50	Shield	1191968	050 080VS
52	Retaining Ring	1183840	052 910
54A	Harness Lug (2 req.)	1183866	054A080S

KEY NO.	DESCRIPTION	PART NO.	PENN STYLE NO.
54B	Rod Brace Lug (2 req.)	1183868	054B080S
54C	Harness Lug Screw (8 req.)	1192025	054B080VS
55	Ball Bearing (4 req.)	1183878	055 080
55A	Ball Bearing (2 req.)	1183879	055 080ST
56	Rod Brace	1183901	056 116
56C	Rod Brace Assembly	1183909	056C115
56P	Rod Brace Pad	1183913	056P117
62	Click Spring	1184022	062 050
62A	Drag Cover Lock Spring	1184029	062 545
63	Stand Screw (4 req.)	1184045	063 030T
63A	Handle Shaft Screw	1184056	063A050
63B	Handle Knob Screw	1192077	063 080VS
67	Pinion Gear Washer	1184106	067 070
67A	Retaining Screw	1184111	067A070
69A	Retaining Ring	1184133	069C245
81	Ratchet	1184207	081 080S
91	Handle Knob Shaft	1192179	091 080VS
95	Click Tongue Bushing	1184307	095 070
95A	Click Bushing Washer	1184311	095A050
95B	Retaining Plate	1184312	095B070
95S	Retaining Plate Screw	1181953	023 750
99	Hook Screw, L.H. (2 req.)	1184401	099 115
101	Ratchet Screw (6 req.)	1184403	101 030
101A	Drag Washer Screw (6 req.)	1184406	101 130S
110A	Locating Ring	1184440	110A030VS
110B	Shift Base	1184446	110B030VS
110C	Shift Button Retainer	1184447	110C030VS
112	Drag Knob Asm (GOLD)	1184456	112 030VS
112	Drag Knob Asm (SILVER)	1390201	112 030VSSLV
112A	Drag Knob Sleeve	1184460	112A030VS
112B	Drag Knob Screw (GOLD)	1184464	112B070
112B	Drag Knob Screw (SILVER)	1389498	112B070SLV
112BA	Drag Lever Knob (GOLD)	1192711	112B030VS
112BA	Drag Lever Knob (SILVER)	1389497	112B030VSSLV
112C	Drag Click Plate	1192712	112C030VS
112E	Drag Lever Click Plate Housing	1192713	112E030VS
117A	Inner Drive Plate	1184497	117A080T
117D	Outer Drive Plate	1184506	117D080T
119	Shift Plate	1184515	119 024KG
124	Bridge Cover Assembly	1192722	124L080VS
128A	Drive Plate	1184566	128A024KG
133	Retaining Plate	1184602	133 030VS
134	Gear Stud	1192313	134 080VS
134B	Sleeve (2 req.)	1192321	134B080VS
134D	Gear Stud Collar	1192323	134D080VS
141	Cam Follower	1184656	141 070
143	Preset Screw	1184674	143 070
152	Rod Clamp Nut (2 req.)	1184714	152A080T
154A	Shim- Spool (as required)	1184719	154 080
154B	Shim- Spool (as required)	1253919	154 080-5
155	Turnbuckles (2 req.)	1184724	155 115
156	Drag Cover	1192353	156 080VS
156A	Lock Pin	1184752	156A030VS
156B	Lock Plate	1184756	156B030VS
161	Locating Pin Assembly (2 req.)	1192369	161C030VSW
165	Hook Screw, R.H. (2 req.)	1184797	165 115
170	Catch Assembly	1184809	170 030VS
171	Shift Plunger	1184811	171 015KG
172	Shift Button, Metal	1226062	172N030VS
172A	Spacer	1192379	172A080VS
172B	Shifter Catch Plate(2 req)	1184835	173 030VS
173A	Shifter Catch Holder	1184848	173A030VS
173B	Retaining Ring	1184839	173 080VS
183	Frame (GOLD)	1192398	183 080VSW
183	Frame (SILVER)	1389508	183 080VSWSLV
195	Retaining Ring	1184956	195 600
195A	Retaining Ring	1184105	067 030VS
195B	Spiral Retaining Ring	1184954	195 024KG
264	Stand Gasket	1185228	264 080T
302D	Drag Click Plate Spring	1185255	302D525MAG