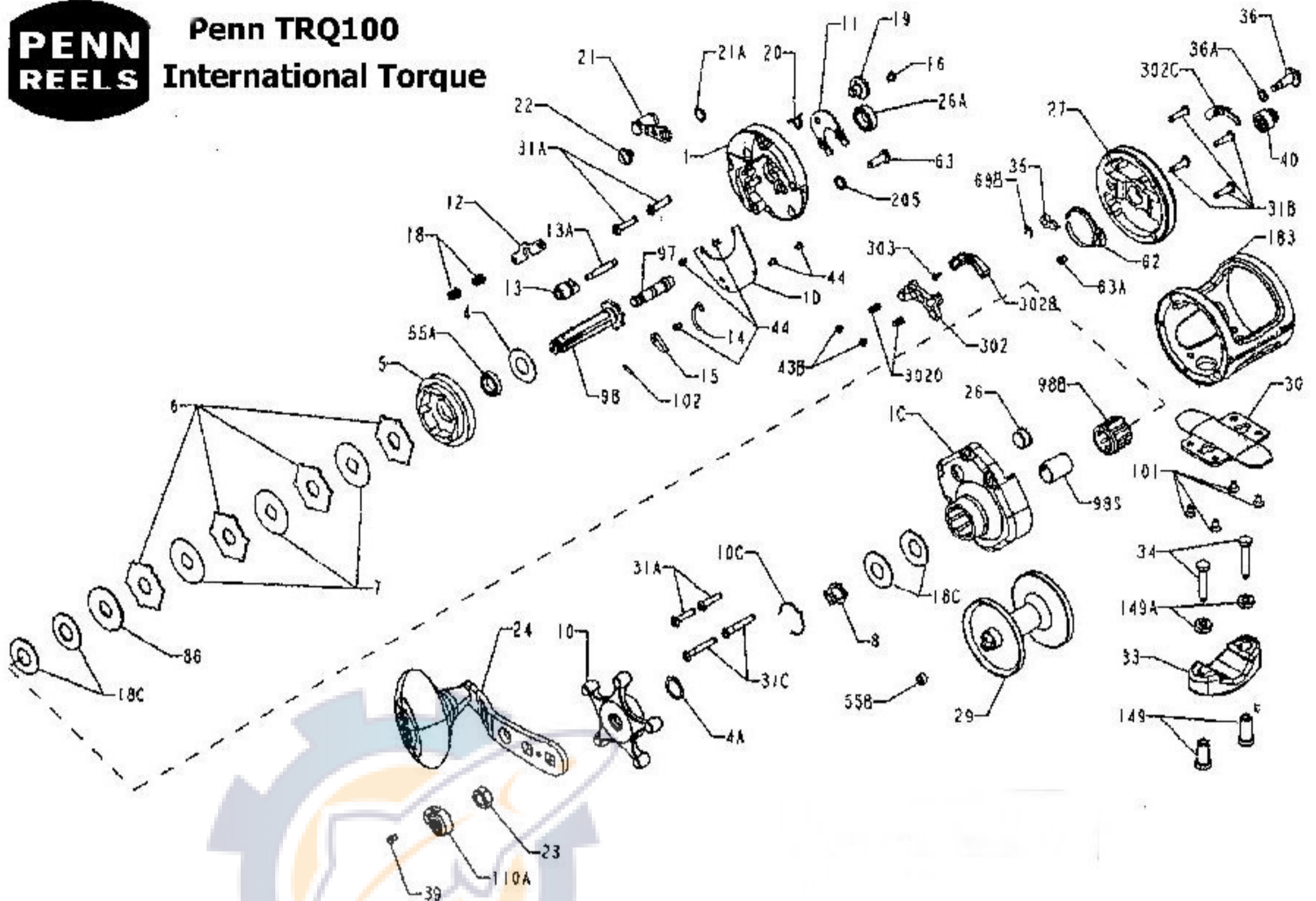


**PENN
REELS**

Penn TRQ100 International Torque



Penn Reel Parts list for:

Model: TRQ100 International Torque

KEY NO	PART NO.	DESCRIPTION	KEY NO	PART NO.	DESCRIPTION
1	1-100T	RIGHT SIDE PLATE	33	33N-113	ROD CLAMP
1C	1C-100T	COVER, RIGHT SIDE	34	34-16VS	ROD CLAMP SCREW (2 REQUIRED)
1D	1D-100T	BACKING PLATE	35	35-155	CLICK TONGUE
4	4-60	GRAPHITE WASHER	36	36-300T	CLICK BUTTON
4A	4-300T	GRAPHITE WASHER	36A	36A-300T	WASHER, CLICK BUTTON
5	5-100T	MAIN GEAR	39	39-10	SCREW
6	6-525MAG	DRAG WASHER (4 REQUIRED)	40	40-300T	BEARING CLIP, LEFT SIDE
7	7-113HN	METAL DRAG WASHER (3 REQUIRED)	43B	43B-965	MAGNET HOUSING SCREW (2 REQUIRED)
8	8-113HN	SPRING RETAINER	44	44-300T	SCREW (5 REQUIRED)
10	10-300T	DRAG STAR	55A	55-113HN	BALL BEARING (MAIN GEAR)
10C	10C-113HN	DETENT SPRING	55B	55-910	BALL BEARING (SPOOL ASSEMBLY)
11	11-100T	ECCENTRIC JACK	62	62-209	CLICK SPRING
12	12-300T	PINION YOKE	63	63-30T	SCREW (GEAR STUD)
13	13-100T	PINION	63A	63-209	SCREW (CLICK SPRING)
13A	13A-113HN	PINION PIN	69B	69B-600	RETAINING RING
14	14-300T	DOG SPRING (2 REQUIRED)	86	86-49H	WASHER, KEYED
15	15-200T	DOG, ANTI-REVERSE (2 REQUIRED)	97	97-300T	BRIDGE (FIGEAR STUD)
16	16-200T	ECCENTRIC JACK SCREW	98	98-300T	GEAR SLEEVE
18	18-80	CLUTCH SPRING (2 REQUIRED)	98B	98B-525	CLUTCH BEARING
18C	18-505	TENSION WASHER (4 REQUIRED)	98S	98S-525	CLUTCH BEARING SLEEVE
19	19-200T	ECCENTRIC	101	101-80ST	SCREW, STAND (4 REQUIRED)
20	20-267	ECCENTRIC SPRING	102	102-60	PIN, GEAR SLEEVE
20A	20-321LH	ECCENTRIC SPRING	110A	110A-555	HANDLE NUT CAP
21	21-200T	ECCENTRIC LEVER ASSEMBLY	149	149-45	ROD CLAMP NUT (2 REQUIRED)
21A	21A-200T	ECCENTRIC LEVER WASHER	149A	149-200	ROD CLAMP HEX NUT (2 REQUIRED)
22	22-60CH	SCREW, ECCENTRIC LEVER	183	183-100T	FRAME
23	23-555	HANDLE NUT	205	205-300T	WASHER, GEAR STUD
24	24-200T	HANDLE	302	302-525MAG	MAGNET HOUSING
26	26-113HN	BEARING CLIP ASSEMBLY	302B	302B-525MAG	MAGNET CONTROL BUTTON
26A	26A-2.5FR	BALL BEARING	302C	302C-525MAG	MAGNET RAMP
27	27-100T	LEFT SIDE PLATE ASSEMBLY	302D	302D-525MAG	MAGNET SPRING (2 REQ.)
29	29L-100T	SPOOL ASSEMBLY	303	303-525MAG	MAGNET BUTTON SCREW
30	30-16VS	STAND			
31A	31TA-300T	SCREW R.S. (4 REQUIRED)			
31B	31TB-300T	SCREW L.S. (4 REQUIRED)			
31C	31T-15KG	SCREW R.S. (2 REQUIRED)			