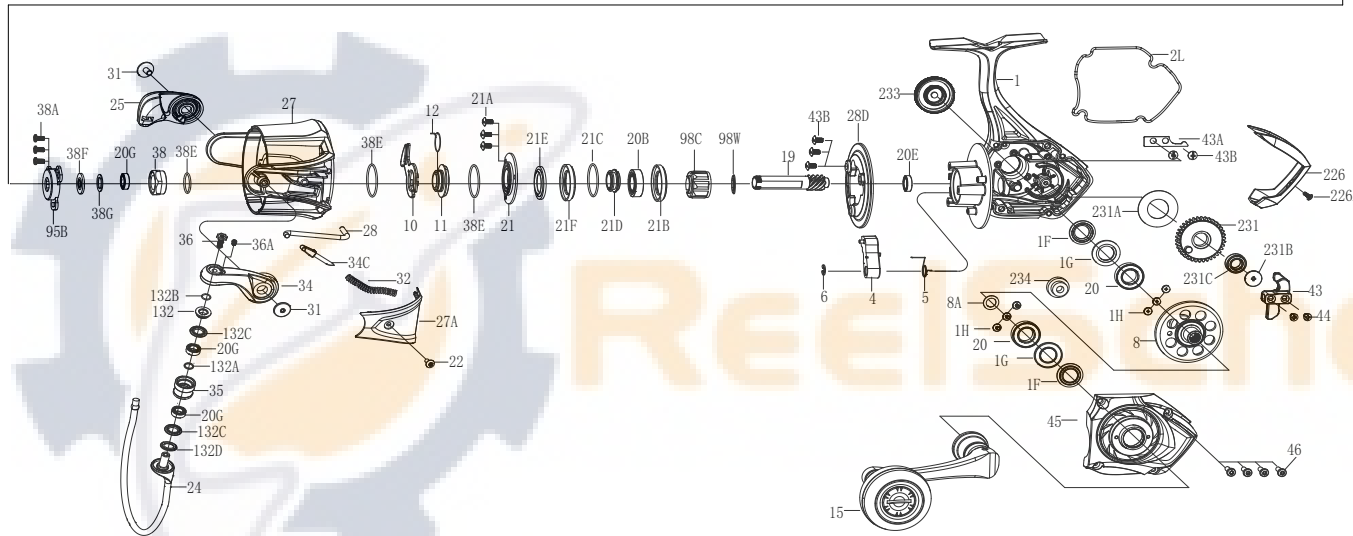
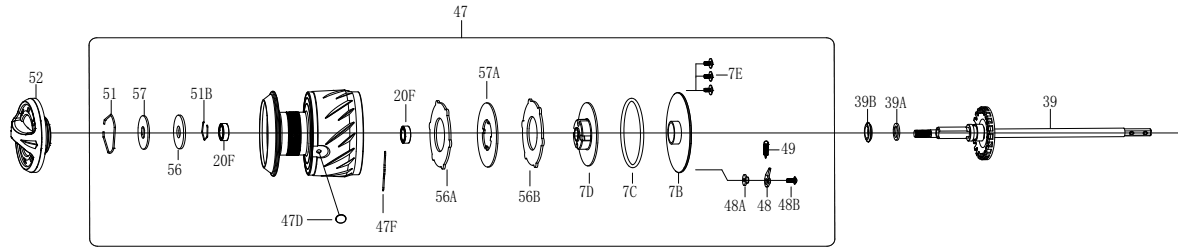




PARTS LIST FOR MODEL AS ATH6500HS



KEY NO.	PART NO.	PENN STYLE NO.	DESCRIPTION
22	1577821	22-ATH7500	Screw
24	1578052	24-ATH6500	Bail Wire
25	1578006	25-ATH5500	Bail Holder
27	1578053	27-ATH6500	Rotor
27A	1578054	27A-ATH6500	Bail Pivot Cover
28	1578055	28-ATH6500	Trip Lever
28D	1578056	28D-ATH6500	Rotor Brake
31	1577827	31-ATH7500	Bail Arm Screw (2 req)
32	1578011	32-ATH5500	Bail Spring
34	1578012	34-ATH5500	Bail Arm
34C	1489399	34C-SSV15500	Pivot Arm
35	1578013	35-ATH5500	Line Roller
36	1577831	36-ATH7500	Bail Stud Screw
36A	1577832	36A-ATH7500	Bail Stud Screw
38	1578016	38-ATH5500	Rotor Nut
38A	1577834	38A-ATH7500	Rotor Nut Cover Screw(3req)
38E	1489203	38E-SSV13500	Rotor O-Ring(3 req)
38F	1578018	38F-ATH5500	Main Shaft Seal Ring
38G	1578019	38G-ATH5500	Main Shaft Seal Ring
39	1578057	39-ATH6500	Main Shaft Assembly
39A	1577837	39A-ATH7500	Thrust Washer
39B	1577838	39B-ATH7500	Shaft Seal
43	1578023	43-ATH5500	Crosswind Block
43A	1578024	43A-ATH5500	Crosswind Block Plate
43B	1489213	43B-SSV13500	Plate Screw (5 req)
44	1191845	44-5000SG	Crosswind Block Screw(2 req)
45	1578025	45-ATH5500	Housing Cover Assembly
46	1577842	46-ATH7500	Housing Cover Screw (4req)
47	1578067	47-ATH6500HS	Spool Assembly
47D	1489408	47D-SSV15500	Line Clip
47F	1577921	47F-ATH2500	Line Clip Spring
48	1578029	48-ATH5500	Click Tongue
48A	1578030	48A-ATH5500	Click Tongue Washer
48B	1577845	48B-ATH7500	Spool Click Screw
49	1211627	49-5000SG	Click Tongue Spring
51	1308112	51-CFT5000	Drag Retaining Ring
51B	1577846	51B-ATH7500	Drag Retaining Ring
52	1578059	52-ATH6500	Drag Knob Assembly
56	1577848	56-ATH7500	Drag Washer
56A	1578035	56A-ATH5500	Drag Washer
56B	1578036	56B-ATH5500	Drag Washer
57	1489330	57-SSV17500	Keyed Washer
57A	1578037	57A-ATH5500	Keyed Washer
95B	1489331	95B-SSV17500	Rotor Locking Plate
98C	1578038	98C-ATH5500	Clutch/Sleeve Assembly
98W	1580636	98W-ATH5500	Washer
132	1578060	132-ATH6500	Roller Washer
132A	1577854	132A-ATH7500	Line Roller Bushing
132B	1577855	132B-ATH7500	O-Ring
132C	1577856	132C-ATH7500	O-Ring(2 req)
132D	1578043	132D-ATH5500	Roller Washer
226	1578044	226-ATH5500	Rear Cover
226A	1577858	226A-ATH7500	Rear Cover Screw
231	1578061	231-ATH6500	Crosswind Gear Assembly
231A	1578047	231A-ATH5500	Crosswind Gear Washer
231B	1489230	231B-SSV13500	Crosswind Gear Screw
231C	1577887	20F-ATH2500	Crosswind Gear Bearing
233	1578068	233-ATH6500HS	Bearing Cover Assembly
234	1578050	234-ATH5500	Transfer Gear

KEY NO.	PART NO.	PENN STYLE NO.	DESCRIPTION	KEY NO.	PART NO.	PENN STYLE NO.	DESCRIPTION
1	1578063	1-ATH6500HS	Housing Assembly	11	1577990	11-ATH5500	Bushing
1F	1489419	1F-SSV15500	Main Gear Seal Ring(2 req)	12	1489426	12-SSV15500	Bushing Spring
1G	1489418	1G-SSV15500	Seal Plate(2 req)	15	1578065	15-ATH6500HS	Handle Assembly
1H	1489176	1H-SSV13500	Bearing Screw (6 req)	19	1578066	19-ATH6500HS	Pinion Gear
2L	1577984	2L-ATH5500	Housing Seal Ring	20	1577993	20-ATH5500	Ball Bearing (2 req)
4	1489448	4-SSV16500	A/R Pawl	20B	1577994	20B-ATH5500	Ball Bearing
5	1489422	5-SSV15500	Pawl Spring	20E	1577814	20E-ATH7500	Ball Bearing
6	1190979	6-5000SG	Retaining Clip	20F	1577813	20F-ATH7500	Ball Bearing (2 req)
7B	1577985	7B-ATH5500	Spool Pedestal Cover	20G	1577830	35A-ATH7500	Ball Bearing (3 req)
7C	1577803	7C-ATH7500	O-ring	21	1577998	21-ATH5500	Bearing Retainer
7D	1577987	7D-ATH5500	Spool Pedestal Cover	21A	1192645	21A-5000SG	Screw (3 req)
7E	1577805	7E-ATH7500	Screw (3 req)	21B	1577999	21B-ATH5500	Collar
8	1578064	8-ATH6500HS	Main Gear	21C	1577817	21C-ATH7500	Bearing Retainer O-Ring
8A	1485572	8B-PUR1115000	Shim	21D	1578001	21D-ATH5500	Seal
10	1489450	10-SSV16500	A/R Holder	21E	1577819	21E-ATH7500	Pinion Gear Seal
				21F	1578003	21F-ATH5500	Bearing Cover

407-ATH6500HS Rev. 0 25-2-2022

1563162