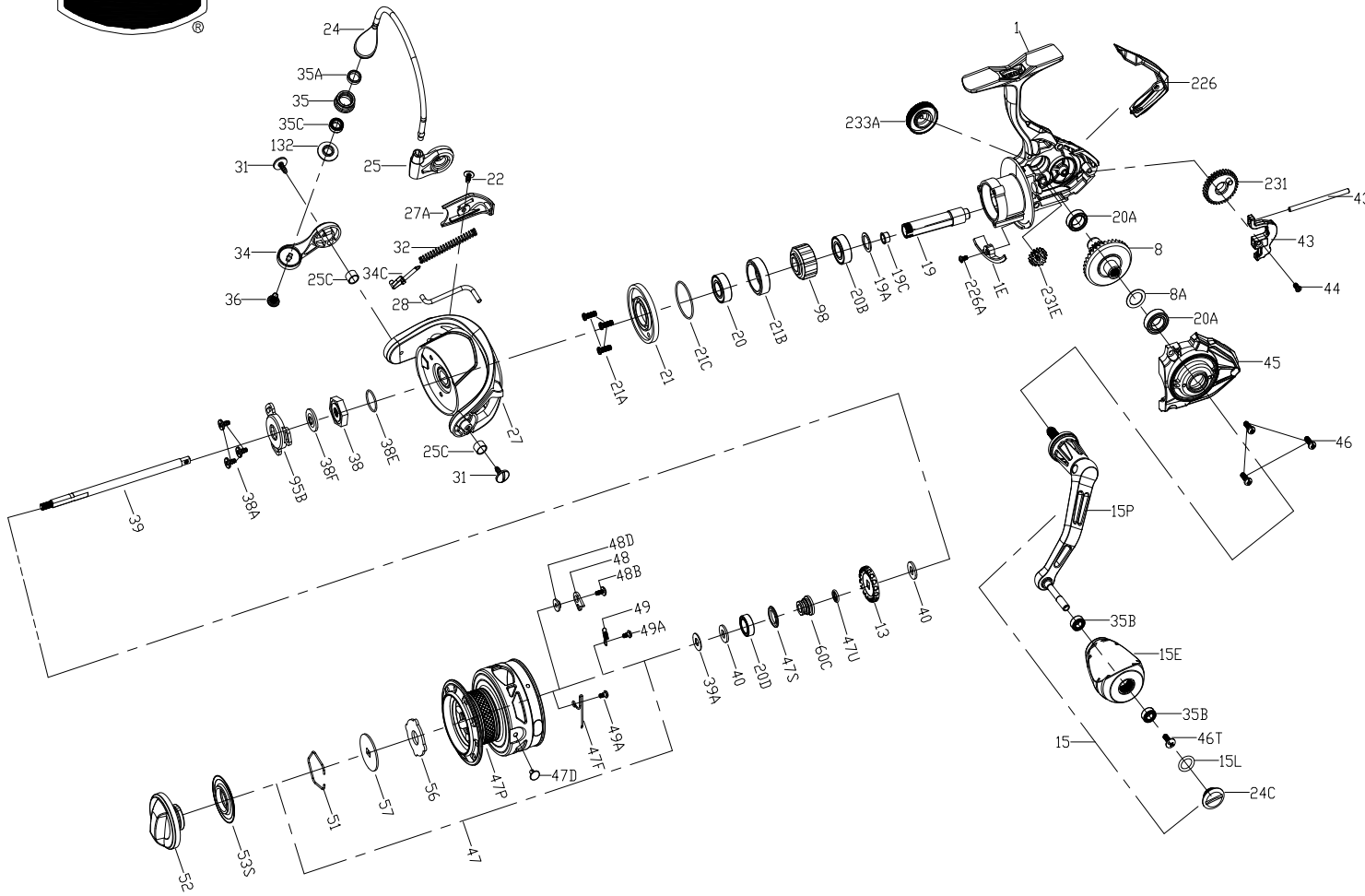




# PARTS LIST FOR MODEL CLAI1000



KEY NO.	PART NO.	PENN STYLE NO.	DESCRIPTION
25C	1188261	25C-CLA2000	Bail Holder Bushing(2 req)
27	1525125	27-CLAI1000	Rotor
27A	1525126	27A-CLAI1000	Rotor Cover
28	1525127	28-CLAI1000	Rotor Trip Lever
31	1385619	31-CLA2000	Bail Arm Screw(2 req)
32	1525910	32-CLAI2000	Bail Spring
34	1525153	34-CLAI2000	Bail Arm
34C	1385621	34C-CLA2000	Bail Arm Lever
35	1525154	35-CLAI2000	Line Roller
35A	1474155	35A-SLAI13500	Line Roller Bushing
35B	1418393	35B-CLA3000	Ball Bearing(2 req)
35C	1525199	35C-CLAI3000	Bearing
36	1389419	36-CLA2000	Line Roller Screw
38	1525128	38-CLAI1000	Nut
38A	1385554	38A-CLA2000	Screw(3 req)
38E	1525876	38E-CLAI1000	Seal
38F	1525129	38F-CLAI1000	Seal
39	1525130	39-CLAI1000	Main Shaft
39A	1385627	39A-CLA2000	Washer
40	1252700	40-CLA2000	Washer(2 req)
43	1525131	43-CLAI1000	Oscillation Slider
43F	1525132	43F-CLAI1000	Guide Shaft
44	1525877	44-CLAI1000	Screw
45	1525133	45-CLAI1000	Body Cover Assembly
46	1385633	46-CLA2000	Body Cover Screw(3 req)
46T	1341500	3-SSV7500LC	Screw
47	1525134	47-CLAI1000	Spool Assembly
47D	1276953	47D-SSV3500	Line Clip
47F	1385637	47F-CLA2000	Line Clip Retainer
47P	1525135	47P-CLAI1000	Spool
47S	1525162	47S-CLAI2000	Seal
47U	1525163	47U-CLAI2000	Seal
48	1525912	48-CLAI3000	Spool Clicker Plate
48B	1385581	48B-CLA3000	Spool Clicker Spring Screw
48D	1385579	48D-CLA3000	Spool Clicker Spacer Ring
49	1385580	49-CLA3000	Spool Clicker Spring
49A	1341547	49A-SSV7500LC	Spool Clicker Spring Screw(2 req)
51	1277085	51-SSV5500	Drag Washer Retainer
52	1525164	52-CLAI2000	Drag Knob Assembly
53S	1447857	53S-CFTI12000	Drag Knob Seal
56	1525136	56-CLAI1000	Drag Friction Washer
57	1525137	57-CLAI1000	Washer
60C	1525166	60C-CLAI2000	Spool Support Sleeve
95B	1525138	95B-CLAI1000	Rotor Nut Locking Plate
98	1525878	98-CLAI1000	Clutch/Sleeve Assembly
132	1525167	132-CLAI2000	Line Roller Collar
226	1525139	226-CLAI1000	Rear Cover
226A	1525914	226A-CLAI3000	Screw
231	1447837	231-CFTI1000	Oscillation Gear
231E	1538000	231E-CFTI1000	Slow Oscillation Gear
233A	1525140	233A-CLAI1000	Handle Cap Assembly

1	1525065	1-CLAI1000	Body Assembly
1E	1525066	1E-CLAI1000	Body Slope
8	1447814	8-CFTI1000	Drive Gear
8A	1114764	8A-CFTI1000	Washer
13	1447840	13-CFTI2000	Click Gear
15	1525067	15-CLAI1000	Handle Assembly
15E	1447842	15E-CFTI2000	Handle Knob
15L	1417804	15L-CLA2000	Handle Knob Seal
15P	1525068	15P-CLAI1000	Sub-Handle Assembly
19	1525119	19-CLAI1000	Pinion Gear
19A	1447819	19A-CFTI1000	Pinion Gear Washer
19C	1447820	19C-CFTI1000	Pinion Gear Bushing
20	1525120	20-CLAI1000	Bearing
20A	1385533	20D-CLA3000	Main Shaft Sealed Ball Bearing(2 req)
20B	1525121	20A-CLAI1000	Ball Bearing
20D	1385604	20D-CLA2000	Sealed Ball Bearing
21	1525122	21-CLAI1000	Ball Bearing Retainer
21A	1418980	21A-SLA3500	Retainer Screw(3 req)
21B	1525123	21B-CLAI1000	Pinion Ball Bearing Collar
21C	1385605	21C-CLA2000	O-Ring
22	1122148	22-CLA3000	Rotor Cover Screw
24	1525124	24-CLAI1000	One Piece Bail
24C	1417806	24C-CLA3000	Handle Knob Cap
25	1385611	25-CLA2000	Bail Holder

407-CLAI1000 Rev.00 31-3-20  
1522155--CLAI1000