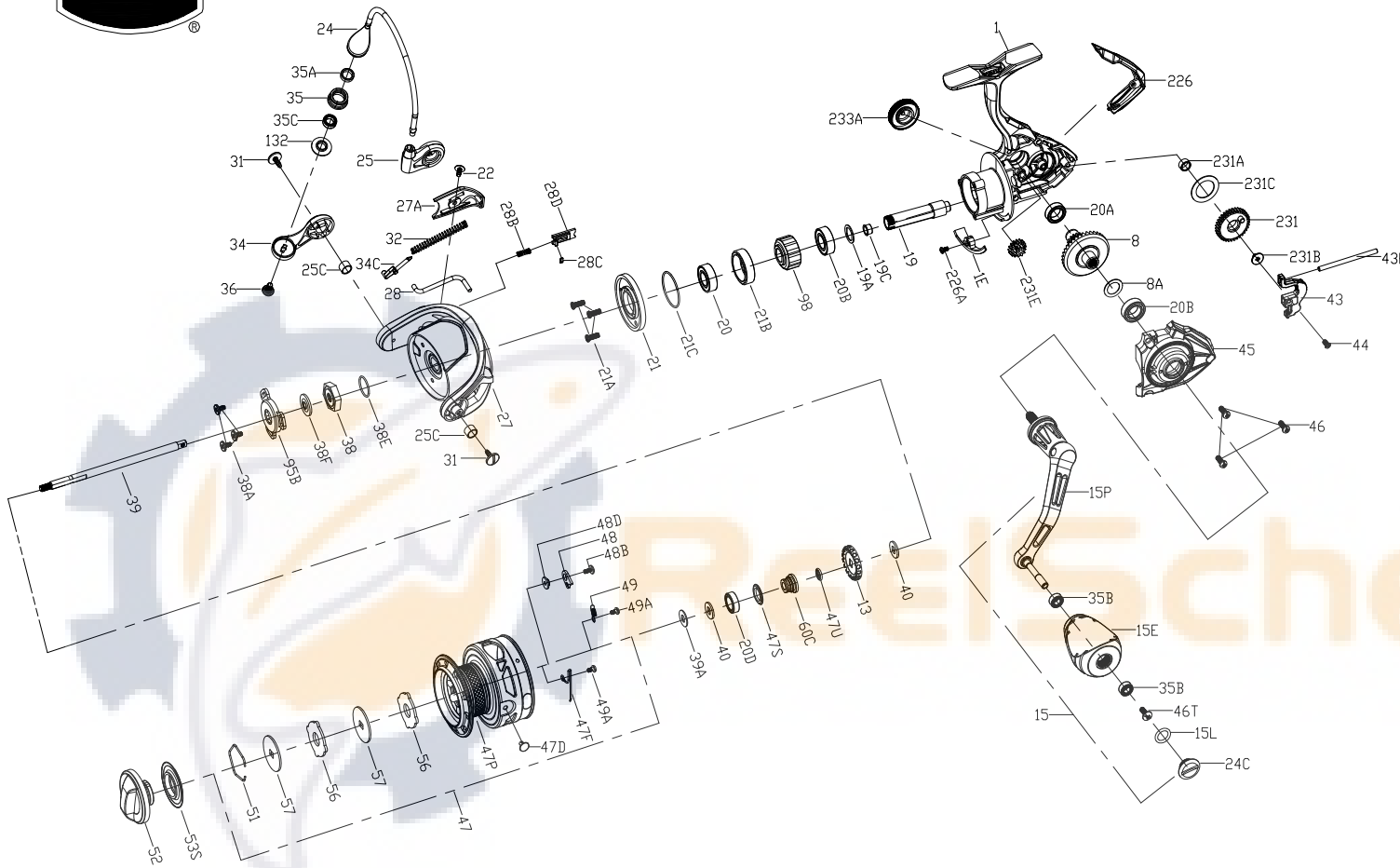




# PARTS LIST FOR MODEL CLAI2000



KEY NO.	PART NO.	PENN STYLE NO.	DESCRIPTION
28B	1346982	28B-CLA2000	Spring
28C	1206550	28C-CLA2000	O Ring
28D	1525152	28D-CLAII2000	Damper Holder
31	1385619	31-CLA2000	Bail Arm Screw(2 req)
32	1525910	32-CLAII2000	Bail Spring
34	1525153	34-CLAII2000	Bail Arm
34C	1385621	34C-CLA2000	Bail Arm Lever
35	1525154	35-CLAII2000	Line Roller
35A	1474155	35A-SLAI3500	Line Roller Bushing
35B	1418393	35B-CLA3000	Ball Bearing(2 req)
35C	1525199	35C-CLAII3000	Bearing
36	1389419	36-CLA2000	Line Roller Screw
38	1418993	38-SLA3500	Rotor Nut
38A	1385554	38A-CLA2000	Screw(3 req)
38E	1418958	38E-SLA3500	Pinion Gear Seal
38F	1418959	38F-SLA3500	Rotor-Main Shaft Seal
39	1525155	39-CLAII2000	Main Shaft
39A	1385627	39A-CLA2000	Washer
40	1252700	40-CLA2000	Washer(2 req)
43	1525156	43-CLAII2000	Oscillation Slider
43F	1525157	43F-CLAII2000	Guide Shaft
44	1525158	44-CLAII2000	Screw
45	1525159	45-CLAII2000	Body Cover Assembly
46	1385633	46-CLA2000	Body Cover Screw(3 req)
46T	1341500	3-SSV7500LC	Screw
47	1525160	47-CLAII2000	Spool Assembly
47D	1276953	47D-SSV3500	Line Clip
47F	1385637	47F-CLA2000	Line Clip Retainer
47P	1525161	47P-CLAII2000	Spool
47S	1525162	47S-CLAII2000	Seal
47U	1525163	47U-CLAII2000	Seal
48	1525912	48-CLAII3000	Spool Clicker Plate
48B	1385581	48B-CLA3000	Spool Clicker Spring Screw
48D	1385579	48D-CLA3000	Spool Clicker Spacer Ring
49	1385580	49-CLA3000	Spool Clicker Spring
49A	1341547	49A-SSV7500LC	Spool Clicker Spring Screw(2 req)
51	1276959	51-SSV3500	Drag Washer Retainer
52	1525164	52-CLAII2000	Drag Knob Assembly
53S	1447857	53S-CFTII2000	Drag Knob Seal
56	1385645	56-CLA2000	Drag Friction Washer(2 req)
57	1525165	57-CLAII2000	Washer(2 req)
60C	1525166	60C-CLAII2000	Spool Support Sleeve
95B	1419009	95B-SLA3500	Rotor Nut Locking Plate
98	1257345	98-CLA2000	One Way Clutch Bearing Assembly
132	1525167	132-CLAII2000	Line Roller Collar
226	1525168	226-CLAII2000	Rear Cover
226A	1525914	226A-CLAII3000	Screw
231	1385652	231-CLA2000	Oscillation Gear
231A	1385595	231A-CLA2000	Oscillation Gear Bushing
231B	1307857	231B-SSV3500	Oscillation Gear Screw
231C	1525169	231C-CLAII2000	Oscillation Gear Washer
231E	1385654	231E-CLA2000	Slow Oscillation Gear
233A	1525216	233A-CLAII3000	Handle Cap Assembly

KEY NO.	PART NO.	PENN STYLE NO.	DESCRIPTION	KEY NO.	PART NO.	PENN STYLE NO.	DESCRIPTION
1	1525141	1-CLAII2000	Body Assembly	20B	1385532	20C-CLA3000	Sealed Ball Bearing(2 req)
1E	1525142	1E-CLAII2000	Body Slope	20D	1385604	20D-CLA2000	Sealed Ball Bearing
8	1385502	8-CLA3000	Drive Gear	21	1525146	21-CLAII2000	Ball Bearing Retainer
8A	1257352	8A-CLA2000	Drive Gear Shim Washer	21A	1418980	21A-SLA3500	Retainer Screw(3 req)
13	1447840	13-CFTII2000	Click Gear	21B	1525147	21B-CLAII2000	Pinion Ball Bearing Collar
15	1525143	15-CLAII2000	Handle Assembly	21C	1385605	21C-CLA2000	O-Ring
15E	1447842	15E-CFTII2000	Handle Knob	22	1122148	22-CLA3000	Rotor Cover Screw
15L	1417804	15L-CLA2000	Handle Knob Seal	24	1525148	24-CLAII2000	One Piece Bail
15P	1525144	15P-CLAII2000	Sub-Handle Assembly	24C	1417806	24C-CLA3000	Handle Knob Cap
19	1525909	19-CLAII2000	Pinion Gear	25	1385611	25-CLA2000	Bail Holder
19A	1277424	19A-SSV3500	Pinion Gear Washer	25C	1188261	25C-CLA2000	Bail Holder Bushing(2 req)
19C	1418978	19C-SLA3500	Pinion Gear Bushing	27	1525149	27-CLAII2000	Rotor
20	1525145	20-CLAII2000	Bearing	27A	1525150	27A-CLAII2000	Rotor Cover
20A	1385530	20A-CLA3000	Sealed Ball Bearing	28	1525151	28-CLAII2000	Rotor Trip Lever