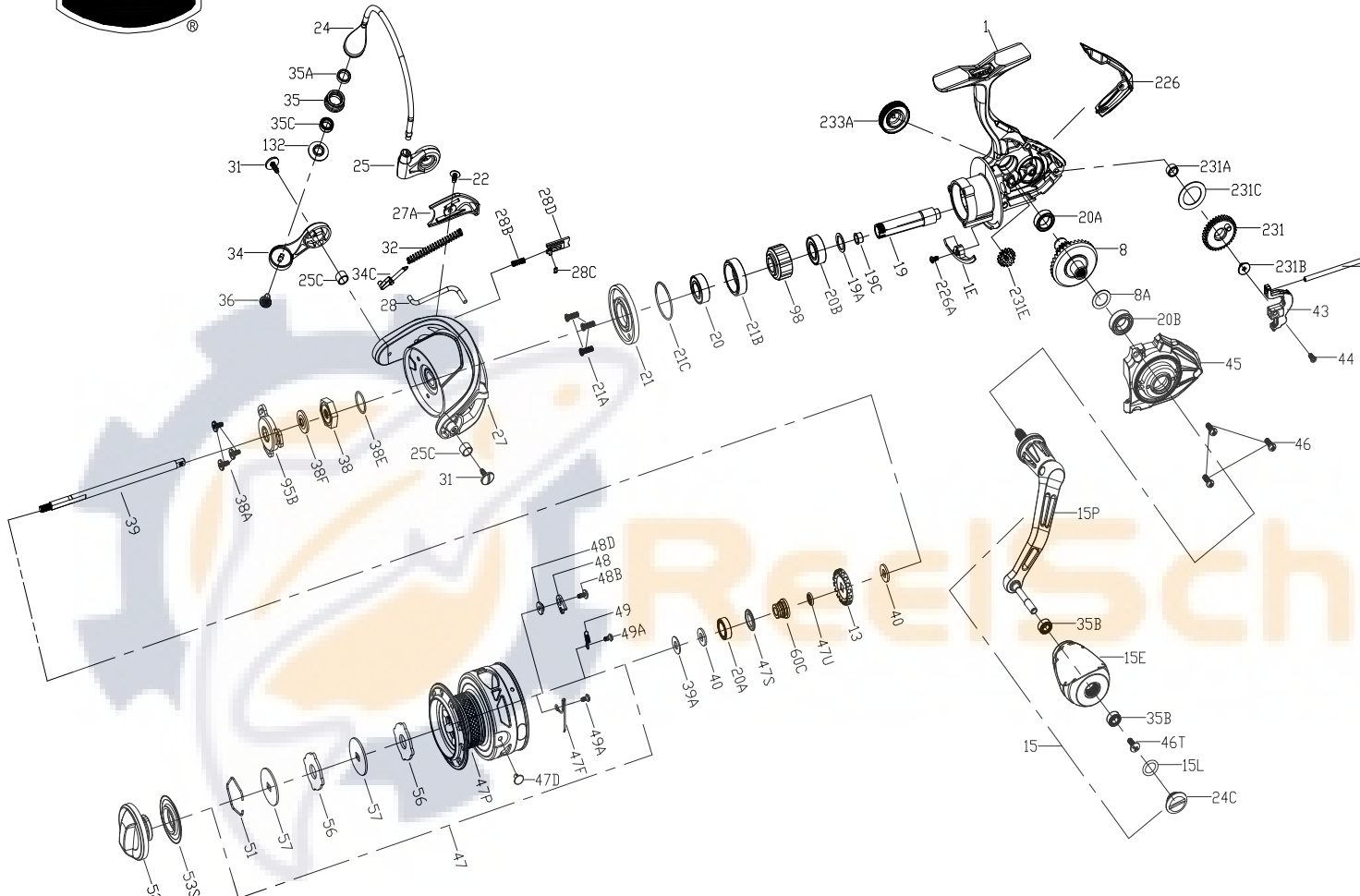




# PARTS LIST FOR MODEL CLAI2500

**WARNING:** Cancer and Reproductive Harm – [www.P65Warnings.ca.gov/products](http://www.P65Warnings.ca.gov/products)



KEY NO.	PART NO.	PENN STYLE NO.	DESCRIPTION
28	1525175	28-CLAI2500	Rotor Trip Lever
28B	1346982	28B-CLA2000	Spring
28C	1206550	28C-CLA2000	O Ring
28D	1525152	28D-CLAI2000	Damper Holder
31	1385619	31-CLA2000	Bail Arm Screw(2 req)
32	1525910	32-CLAI2000	Bail Spring
34	1525153	34-CLAI2000	Bail Arm
34C	1385621	34C-CLA2000	Bail Arm Lever
35	1525154	35-CLAI2000	Line Roller
35A	1474155	35A-SLAI3500	Line Roller Bushing
35B	1418393	35B-CLA3000	Ball Bearing(2 req)
35C	1525199	35C-CLAI3000	Bearing
36	1389419	36-CLA2000	Line Roller Screw
38	1418993	38-SLA3500	Rotor Nut
38A	1385554	38A-CLA2000	Screw(3 req)
38E	1418958	38E-SLA3500	Pinion Gear Seal
38F	1418959	38F-SLA3500	Rotor-Main Shaft Seal
39	1525176	39-CLAI2500	Main Shaft
39A	1494694	39A-SSV2500LL	Washer
40	1422917	40-SLA3500	Washer(2 req)
43	1525156	43-CLAI2000	Oscillation Slider
43F	1525157	43F-CLAI2000	Guide Shaft
44	1525158	44-CLAI2000	Screw
45	1525177	45-CLAI2500	Body Cover Assembly
46	1385633	46-CLA2000	Body Cover Screw(3 req)
46T	1341500	3-SSV7500LC	Screw
47	1525178	47-CLAI2500	Spool Assembly
47D	1276953	47D-SSV3500	Line Clip
47F	1385637	47F-CLA2000	Line Clip Retainer
47P	1525179	47P-CLAI2500	Spool
47S	1494699	47S-SSV2500LL	Seal
47U	1494700	47U-SSV2500LL	Seal
48	1525912	48-CLAI3000	Spool Clicker Plate
48B	1385581	48B-CLA3000	Spool Clicker Spring Screw
48D	1385579	48D-CLA3000	Spool Clicker Spacer Ring
49	1385580	49-CLA3000	Spool Clicker Spring
49A	1341547	49A-SSV7500LC	Spool Clicker Spring Screw(2 req)
51	1276959	51-SSV3500	Drag Washer Retainer
52	1525211	52-CLAI3000	Drag Knob Assembly
53S	1447888	53S-CFTI3000	Drag Knob Seal
56	1385645	56-CLA2000	Drag Friction Washer(2 req)
57	1525180	57-CLAI2500	Washer(2 req)
60C	1525214	60C-CLAI3000	Spool Support Sleeve
95B	1419009	95B-SLA3500	Rotor Nut Locking Plate
98	1257345	98-CLA2000	One Way Clutch Bearing Assembly
132	1525167	132-CLAI2000	Line Roller Collar
226	1525168	226-CLAI2000	Rear Cover
226A	1525914	226A-CLAI3000	Screw
231	1385653	231-CLA2500	Oscillation Gear
231A	1385595	231A-CLA2000	Oscillation Gear Bushing
231B	1307857	231B-SSV3500	Oscillation Gear Screw
231C	1525169	231C-CLAI2000	Oscillation Gear Washer
231E	1385654	231E-CLA2000	Slow Oscillation Gear
233A	1525216	233A-CLAI3000	Handle Cap Assembly

KEY NO.	PART NO.	PENN STYLE NO.	DESCRIPTION	KEY NO.	PART NO.	PENN STYLE NO.	DESCRIPTION
1	1525170	1-CLAI2500	Body Assembly	20A	1385530	20A-CLA3000	Sealed Ball Bearing(2 req)
1E	1525142	1E-CLAI2000	Body Slope	20B	1385532	20B-CLA3000	Sealed Ball Bearing(2 req)
8	1385502	8-CLA3000	Drive Gear	21	1525146	21-CLAI2000	Ball Bearing Retainer
8A	1257352	8A-CLA2000	Drive Gear Shim Washer	21A	1418980	21A-SLA3500	Retainer Screw(3 req)
13	1418974	13-SLA3500	Click Pin	21B	1525147	21B-CLAI2000	Pinion Ball Bearing Collar
15	1525143	15-CLAI2000	Handle Assembly	21C	1385605	21C-CLA2000	O-Ring
15E	1447842	15E-CFTI2000	Handle Knob	22	1122148	22-CLA3000	Rotor Cover Screw
15L	1417804	15L-CLA2000	Handle Knob Seal	24	1525172	24-CLAI2500	One Piece Bail
15P	1525144	15P-CLAI2000	Sub-Handle Assembly	24C	1417806	24C-CLA3000	Handle Knob Cap
19	1525909	19-CLAI2000	Pinion Gear	25	1527948	25-CLAI2500	Bail Holder
19A	1277424	19A-SSV3500	Pinion Gear Washer	25C	1188261	25C-CLA2000	Bail Holder Bushing(2 req)
19C	1418978	19C-SLA3500	Pinion Gear Bushing	27	1525173	27-CLAI2500	Rotor
20	1525145	20-CLAI2000	Bearing	27A	1525174	27A-CLAI2500	Rotor Cover