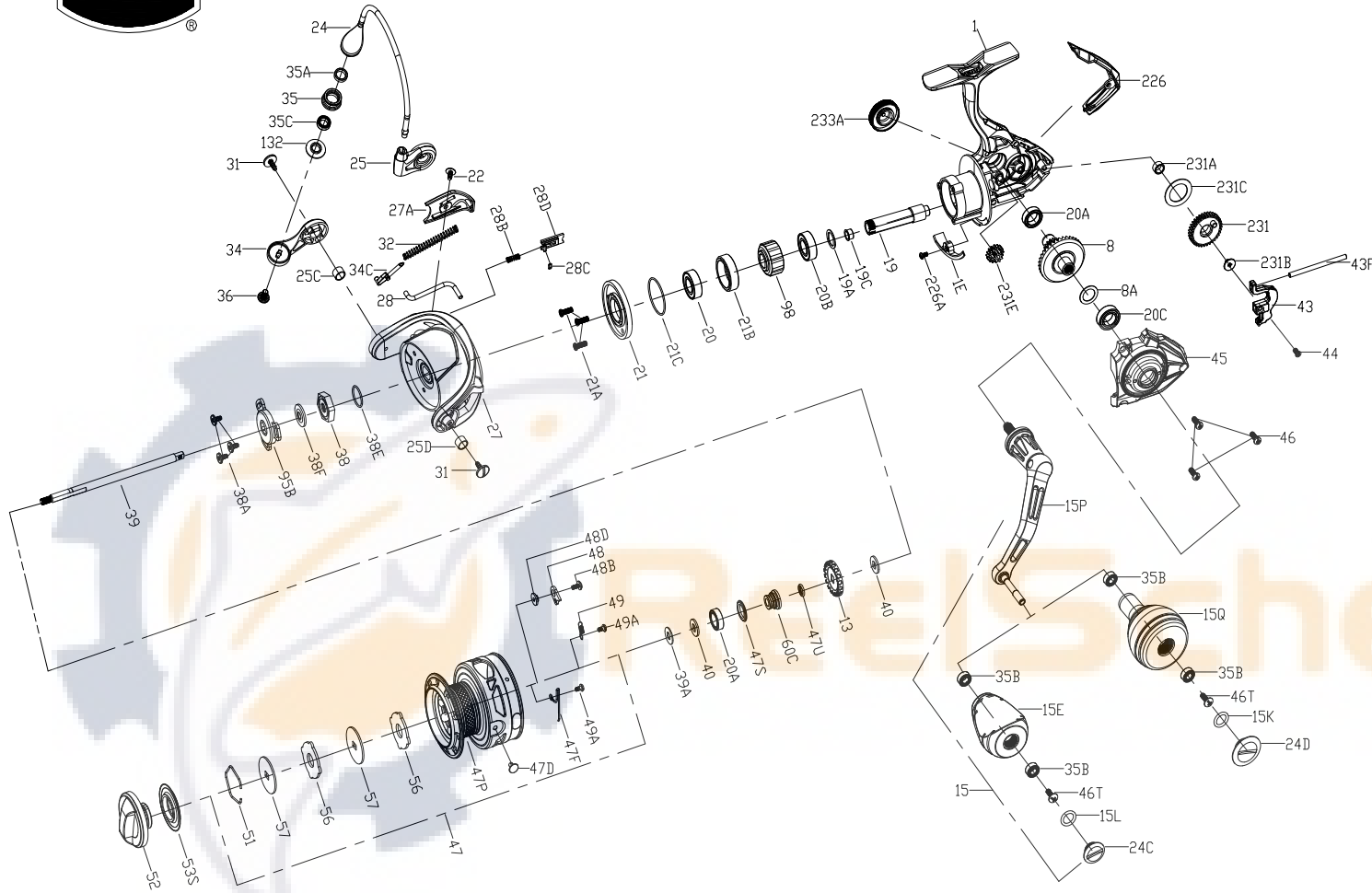




PARTS LIST FOR MODEL CLAI4000

WARNING: Cancer and Reproductive Harm – www.P65Warnings.ca.gov/products



| KEY NO. | PART NO. | PENN STYLE NO. | DESCRIPTION |
|---------|----------|----------------|-----------------------------------|
| 27A | 1525195 | 27A-CLAI4000 | Rotor Cover |
| 28 | 1525197 | 28-CLAI4000 | Rotor Trip Lever |
| 28B | 1385546 | 28B-CLA3000 | Rotor Brake Spring |
| 28C | 1385547 | 28C-CLA3000 | Rotor Brake Seal |
| 28D | 1385545 | 28D-CLA3000 | Rotor Brake |
| 31 | 1385548 | 31-CLA3000 | Bail Arm Screw(2 req) |
| 32 | 1385549 | 32-CLA3000 | Bail Spring |
| 34 | 1385550 | 34-CLA3000 | Bail Arm |
| 34C | 1385551 | 34C-CLA3000 | Pivot Arm |
| 35 | 1525198 | 35-CLAI3000 | Line Roller |
| 35A | 1474155 | 35A-SLAI13500 | Line Roller Bushing |
| 35B | 1418393 | 35B-CLA3000 | Ball Bearing(2 req) |
| 35C | 1525199 | 35C-CLAI3000 | Bearing |
| 36 | 1277061 | 36-SSV5500 | Line Roller Screw |
| 38 | 1418993 | 38-SLA3500 | Rotor Nut |
| 38A | 1385554 | 38A-CLA2000 | Screw(3 req) |
| 38E | 1418958 | 38E-SLA3500 | Pinion Gear Seal |
| 38F | 1418959 | 38F-SLA3500 | Rotor-Main Shaft Seal |
| 39 | 1525201 | 39-CLAI4000 | Main Shaft |
| 39A | 1494694 | 39A-SSVI2500LL | Washer |
| 40 | 1422917 | 40-SLA3500 | Washer(2 req) |
| 43 | 1525202 | 43-CLAI3000 | Oscillation Slider |
| 43F | 1525203 | 43F-CLAI3000 | Guide Shaft |
| 44 | 1525911 | 44-CLAI3000 | Screw |
| 45 | 1525205 | 45-CLAI4000 | Body Cover Assembly |
| 46 | 1385567 | 46-CLA3000 | Body Cover Screw(3 req) |
| 46T | 1341500 | 3-SSV7500LC | Screw |
| 47 | 1525207 | 47-CLAI4000 | Spool Assembly |
| 47D | 1276953 | 47D-SSV3500 | Line Clip |
| 47F | 1525208 | 47F-CLAI4000 | Line Clip Retainer |
| 47P | 1525210 | 47P-CLAI4000 | Spool |
| 47S | 1494699 | 47S-SSVI2500LL | Seal |
| 47U | 1494700 | 47U-SSVI2500LL | Seal |
| 48 | 1385578 | 48-CLA3000 | Spool Clicker Plate |
| 48B | 1385581 | 48B-CLA3000 | Spool Clicker Spring Screw |
| 48D | 1385579 | 48D-CLA3000 | Spool Clicker Spacer Ring |
| 49 | 1385580 | 49-CLA3000 | Spool Clicker Spring |
| 49A | 1341547 | 49A-SSV7500LC | Spool Clicker Spring Screw(2 req) |
| 51 | 1277085 | 51-SSV5500 | Drag Washer Retainer |
| 52 | 1525212 | 52-CLAI4000 | Drag Knob Assembly |
| 53S | 1447888 | 53S-CFTI3000 | Drag Knob Seal |
| 56 | 1385584 | 56-CLA3000 | Drag Friction Washer(2 req) |
| 57 | 1525213 | 57-CLAI3000 | Washer(2 req) |
| 60C | 1525214 | 60C-CLAI3000 | Spool Support Sleeve |
| 95B | 1419009 | 95B-SLA3500 | Rotor Nut Locking Plate |
| 98 | 1525913 | 98-CLAI3000 | Clutch/Sleeve Assembly |
| 132 | 1527945 | 132-CLAI4000 | Line Roller Collar |
| 226 | 1525215 | 226-CLAI3000 | Rear Cover |
| 226A | 1525914 | 226A-CLAI3000 | Screw |
| 231 | 1385593 | 231-CLA4000 | Oscillation Gear |
| 231A | 1385595 | 231A-CLA2000 | Oscillation Gear Bushing |
| 231B | 1307857 | 231B-SSV3500 | Oscillation Gear Screw |
| 231C | 1525915 | 231C-CLAI3000 | Oscillation Gear Washer |
| 231E | 1385597 | 231E-CLA4000 | Slow Oscillation Gear |
| 233A | 1525216 | 233A-CLAI3000 | Handle Cap Assembly |

| KEY NO. | PART NO. | PENN STYLE NO. | DESCRIPTION |
|---------|----------|----------------|------------------------|
| 1 | 1525182 | 1-CLAI4000 | Body Assembly |
| 1E | 1525183 | 1E-CLAI3000 | Body Slope |
| 8 | 1385502 | 8-CLA3000 | Drive Gear |
| 8A | 1276920 | 8A-SSV3500 | Drive Gear Shim Washer |
| 13 | 1418974 | 13-SLA3500 | Click Gear |
| 15 | 1525185 | 15-CLAI3000 | Handle Assembly |
| 15E | 1447870 | 15E-CFTI3000 | Handle Knob |
| 15K | 1447871 | 15L-CFTI3000 | Handle Knob Seal |
| 15L | 1417804 | 15L-CLA2000 | Handle Knob Seal |
| 15P | 1525187 | 15P-CLAI3000 | Sub-Handle Assembly |
| 15Q | 1417807 | 15E-CLA5000 | Handle Knob |
| 19 | 1525188 | 19-CLAI3000 | Pinion Gear |
| 19A | 1277424 | 19A-SSV3500 | Pinion Gear Washer |
| 19C | 1418978 | 19C-SLA3500 | Pinion Gear Bushing |
| 20 | 1525189 | 20E-CLA3000 | Bearing |

| KEY NO. | PART NO. | PENN STYLE NO. | DESCRIPTION |
|---------|----------|----------------|----------------------------|
| 20A | 1385530 | 20A-CLA3000 | Sealed Ball Bearing(2 req) |
| 20B | 1385531 | 20B-CLA3000 | Sealed Ball Bearing |
| 20C | 1385532 | 20C-CLA3000 | Sealed Ball Bearing |
| 21 | 1525190 | 21-CLAI3000 | Ball Bearing Retainer |
| 21A | 1418980 | 21A-SLA3500 | Retainer Screw(3 req) |
| 21B | 1385535 | 21B-CLA3000 | Pinion Ball Bearing Collar |
| 21C | 1418981 | 21C-SLA3500 | Body Head Seal |
| 22 | 1122148 | 22-CLA3000 | Rotor Cover Screw |
| 24 | 1527947 | 24-CLAI4000 | One Piece Bail |
| 24C | 1417806 | 24C-CLA3000 | Handle Knob Cap |
| 24D | 1417808 | 24C-CLA5000 | Handle Knob Cap |
| 25 | 1525191 | 25-CLAI4000 | Bail Holder |
| 25C | 1385540 | 25C-CLA3000 | Bail Holder Bushing |
| 25D | 1527946 | 25D-CLAI4000 | Bushing |
| 27 | 1525193 | 27-CLAI4000 | Rotor |