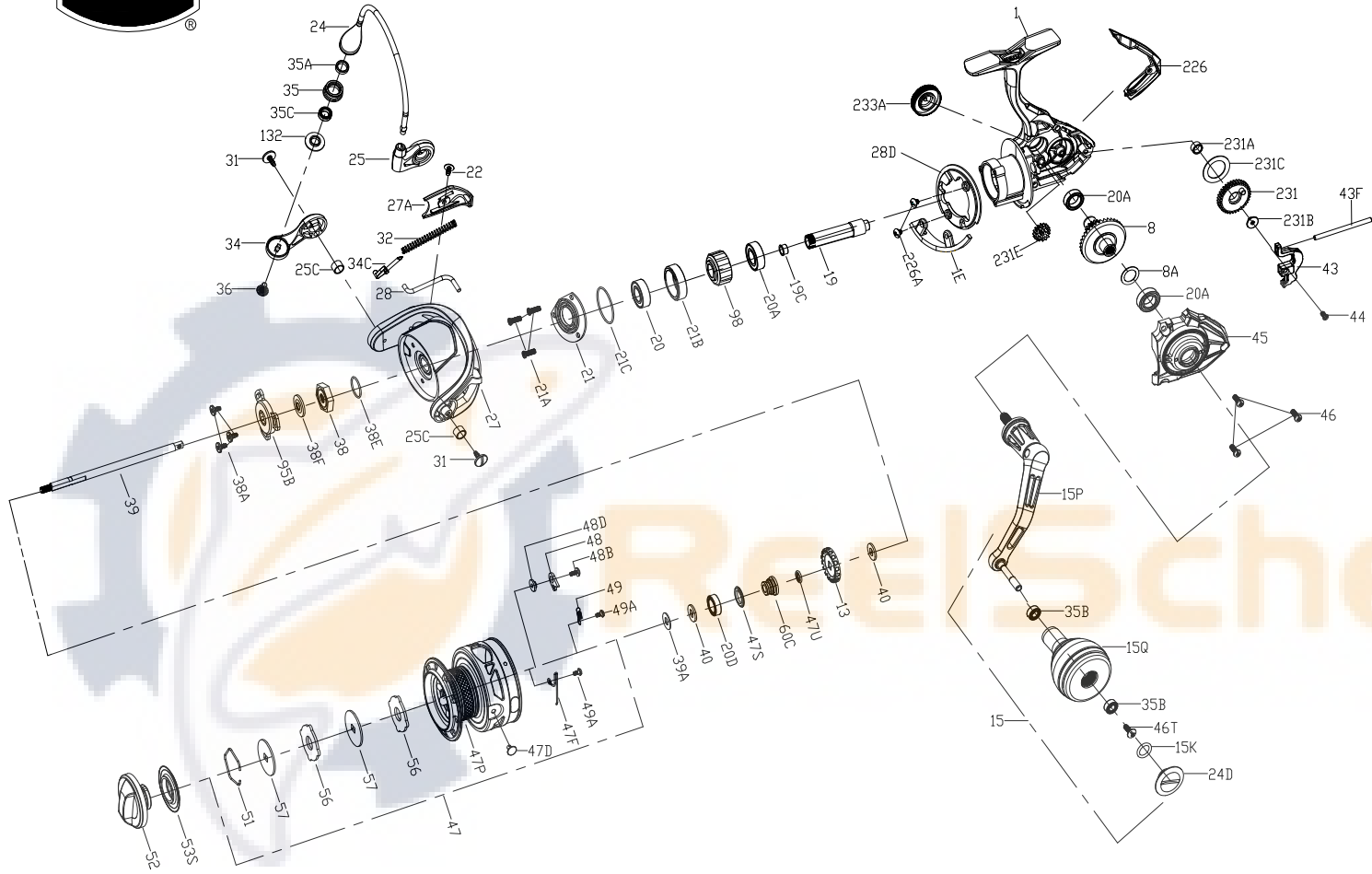




PARTS LIST FOR MODEL CLAI15000



KEY NO.	PART NO.	PENN STYLE NO.	DESCRIPTION
28D	1339509	28D-CLA5000	Rotor Brake
31	1339513	31-CLA5000	Bail Arm Screw(2 req)
32	1525240	32-CLA15000	Spring
34	1525241	34-CLA15000	Bail Arm
34C	1389469	34C-CLA6000	Pivot Arm
35	1525916	35-CLA15000	Line Roller
35A	1474155	35A-SLA113500	Line Roller Bushing
35B	1377606	35B-BTL118000LC	Line Roller Ball Bearing(2 req)
35C	1525199	35C-CLA113000	Bearing
36	1277166	36-SSV7500	Line Roller Screw
38	1419051	38-SLA5500	Rotor Nut
38A	1385554	38A-CLA2000	Rotor Nut Lock Plate Screw(3 req)
38E	1418958	38E-SLA3500	Pinion Gear Seal
38F	1419052	38F-SLA5500	Rotor-Main Shaft Seal
39	1525242	39-CLA15000	Main Shaft
39A	1277066	39A-SSV5500	Spool Adjust Washer
40	1447918	40-CFT15000	Washer(2 req)
43	1525243	43-CLA15000	Oscillation Slider
43F	1525244	43F-CLA15000	Guide Shaft
44	1277072	44-SSV5500	Main Shaft Screw
45	1525245	45-CLA15000	Body Cover Assembly
46	1277074	46-SSV5500	Body Cover Screw(3 req)
46T	1341500	3-SSV7500LC	Screw
47	1525246	47-CLA15000	Spool Assembly
47D	1277078	47D-SSV5500	Line Clip
47F	1447923	47F-CFT15000	Line Clip Retainer
47P	1525248	47P-CLA15000	Spool
47S	1494699	47S-SSV12500LL	Seal
47U	1525247	47U-CLA15000	Seal
48	1385578	48-CLA3000	Spool Click Plate
48B	1385581	48B-CLA3000	Spool Click Spring Screw
48D	1385579	48D-CLA3000	Spool Clicker Spacer Ring
49	1385580	49-CLA3000	Spool Clicker Spring
49A	1294638	49A-CLA2000	Spool Clicker Spring Screw(2 req)
51	1447925	51-CFT15000	Drag Washer Retainer
52	1525249	52-CLA15000	Drag Knob Assembly
53S	1447927	53S-CFT15000	Drag Knob Seal
56	1339557	56-CLA5000	Drag Friction Washer(2 req)
57	1447928	57-CFT15000	Keyed Washer(2 req)
60C	1525250	60C-CLA15000	Spool Supports Sleeve
95B	1419009	95B-SLA3500	Rotor Nut Locking Plate
98	1277094	98-SSV5500	Clutch/Sleeve Assembly
132	1525917	132-CLA15000	Line Roller Collar
226	1525251	226-CLA15000	Rear Cover
226A	1339512	226A-CLA5000	Rotor Brake Screw(2 req)
231	1447931	231-CFT15000	Oscillation Gear
231A	1339566	231A-CLA5000	O/S Gear Bushing
231B	1525918	231B-CLA15000	Screw
231C	1525919	231C-CLA15000	O/S Gear Washer
231E	1525252	231E-CLA15000	Slow Oscillation Gear
233A	1525253	233A-CLA15000	Handle Cap Assembly
20D	1385530	20A-CLA3000	Sealed Ball Bearing
21	1419025	21-SLA5500	Ball Bearing Retainer
21A	1277154	21A-SSV7500	Pinion Retainer Screw(3 req)
21B	1419024	21B-SLA5500	Pinion Bearing Collar
21C	1385684	21C-CLA8000	O Ring
22	1092845	22-CLA2000	Rotor Cover Screw
24	1525236	24-CLA15000	One Piece Bail
24D	1417808	24C-CLA5000	Handle Knob Cap
25	1339500	25-CLA5000	Bail Holder
25C	1102065	25C-CLA5000	Bushing(2 req)
27	1525237	27-CLA15000	Rotor
27A	1525238	27A-CLA15000	Rotor Cover
28	1525239	28-CLA15000	Bail Trip Lever

KEY NO.	PART NO.	PENN STYLE NO.	DESCRIPTION
1	1525229	1-CLA15000	Body Assembly
1E	1419026	1E-SLA5500	Body Slope
8	1525230	8-CLA15000	Drive Gear
8A	1277037	8A-SSV5500	Drive Gear Shim Washer
13	1525231	13-CLA15000	Clicker Gear
15	1525232	15-CLA15000	Handle Assembly
15K	1447871	15L-CFT113000	Handle Knob Seal
15P	1525233	15P-CLA15000	Sub-Handle Assembly
15Q	1417807	15E-CLA5000	Handle Knob
19	1525234	19-CLA15000	Pinion Gear
19C	1339492	19C-CLA5000	Pinion Gear Pom Bushing
20	1525235	20-CLA15000	Ball Bearing
20A	1308090	20-CFT5000	Ball Bearing(3 req)

KEY NO.	PART NO.	PENN STYLE NO.	DESCRIPTION
20D	1385530	20A-CLA3000	Sealed Ball Bearing
21	1419025	21-SLA5500	Ball Bearing Retainer
21A	1277154	21A-SSV7500	Pinion Retainer Screw(3 req)
21B	1419024	21B-SLA5500	Pinion Bearing Collar
21C	1385684	21C-CLA8000	O Ring
22	1092845	22-CLA2000	Rotor Cover Screw
24	1525236	24-CLA15000	One Piece Bail
24D	1417808	24C-CLA5000	Handle Knob Cap
25	1339500	25-CLA5000	Bail Holder
25C	1102065	25C-CLA5000	Bushing(2 req)
27	1525237	27-CLA15000	Rotor
27A	1525238	27A-CLA15000	Rotor Cover
28	1525239	28-CLA15000	Bail Trip Lever

407-CLA15000 Rev.00 10-23-19
1522162--CLA15000