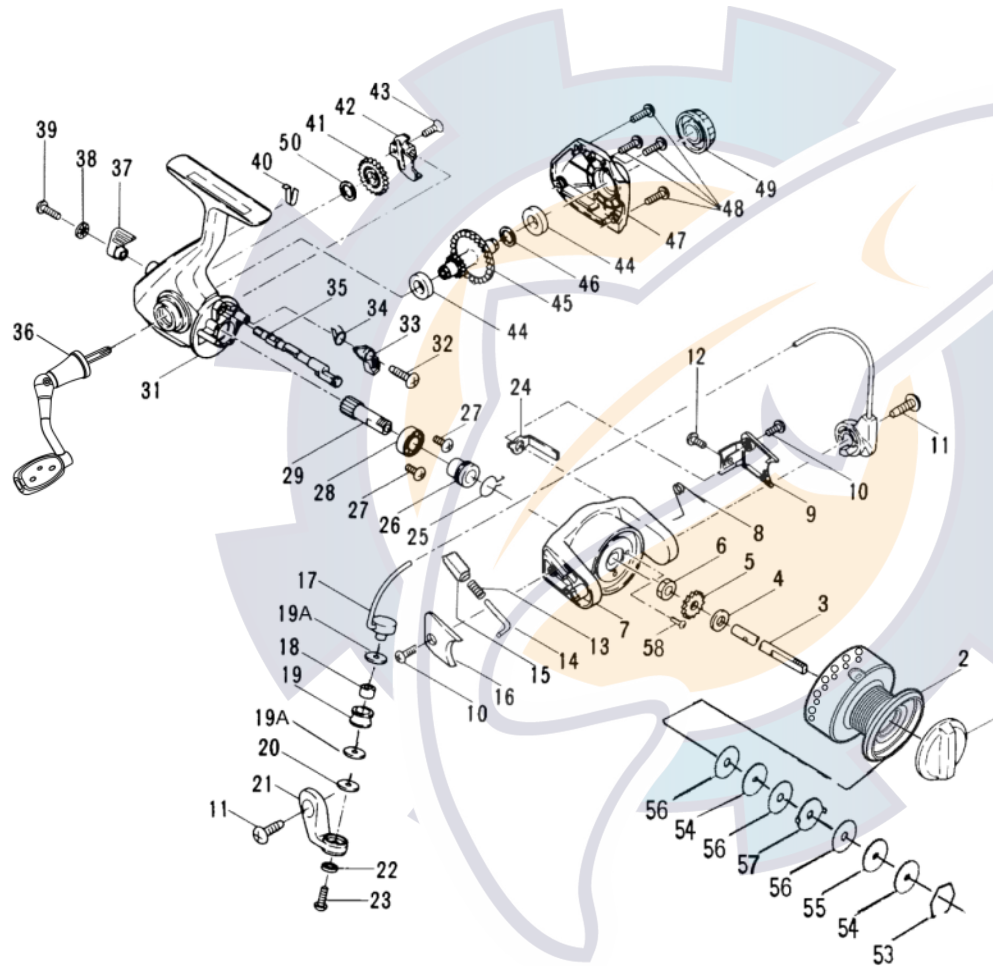


PENN® MODEL PGV 1500



PARTS LIST FOR MODEL PGV1500

KEY NO.	PART NO.	DESCRIPTION
1	52-1500V	Drag Knob ASM. w/Spring
2	47-1500V	Spool Assembly
3	39-1500	Spool Shaft
4	60-1500	Thrust Washer
5	40B-1500	Click Ratchet
6	38-1000	Rotor Nut
7	27-1500V	Rotor Cup
8	106-1000P	Cam Lever Spring
9	227-1500V	Cam Lever Cover
10	50-1000	Cover Screw (2)
11	31A-1000	Arm Screw (2)
12	28B-1500	Cam Lever Mtg. Screw
13	34C-1500P	Pivot Spring
14	34B-1500P	Pivot Shaft
15	34D-1500P	Pivot Guide
16	27A-1500V	Bail Pivot Cover
17	24-1500P	Bail Wire Assembly
18	35A-1000V	Line Roller Ball Bearing
19	35-1000	Line Roller
19A	35B-1000P	Line Roller Teflon Washer (2)
20	132-1000	Line Roller Washer
21	34-1500V	Bail Arm
22	036A-103	Lock Washer
23	36-1000	Bail Stud Screw
24	28A-1500P	Cam Lever
25	230-1500	Silent Dog Spring
26	19A-1500	Pinion Spacer
27	23-1000	Bearing Mtg. Screw (2)
28	20-1000	Ball Bearing
29	19-1500	Pinion Gear
31	1-1500V	Housing
32	3-1500	Dog Mounting Screw
33	4-1500	Anti-Reverse Dog
34	4A-1500	Dog Spring
35	6A-1500	Eccentric Shaft
36	15-1500V	Handle Assembly (w/ ball brg)
37	6E-1000V	Eccentric Lever
38	6G-1000	Lock Washer
39	6F-1000	Ecc. Lever Mounting Scr.
40	6D-1000	Ecc. Shaft Spring
41	231-1500	Crosswind Gear
42	43-1500	Crosswind Block
43	44-1500	Crosswind Block Screw
44	2B-1500	Cover & Hsg Bearing (2)
45	8-1500P	Main Gear
46	8A-3000	Main Gear Shim
47	45-1500V	Housing Cover
48	46-1000	Cover Screw (4)
49	233-1000V	Bearing Cover
50	231A-1500	Crosswind Gear Shim
**51	48-1000P	Spool Click Tongue
**51A	049-103CS	Click Tongue Spring
**52	022-103CS	Click Tongue Screw
53	51-1000	Drag Retaining Ring
54	57-1000	Keyed Drag Washer (2)
55	52A-1000	Thick Drag Washer (1)
56	6-1000	Teflon Drag Washer (3)
57	58-1000	Ear Drag Washer (1)
58	38A-1000	Rotor Nut Locking Screw