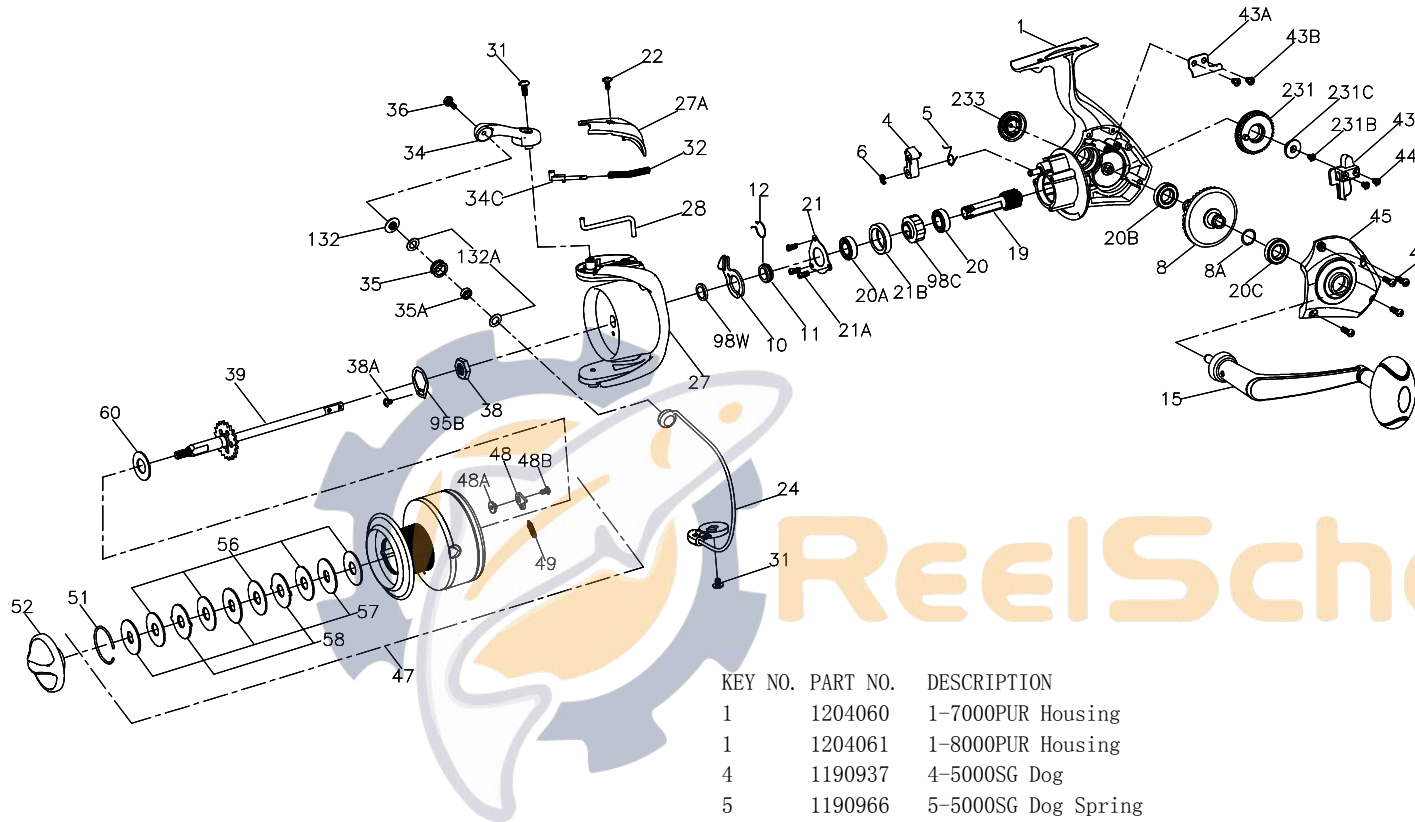




PARTS LIST FOR MODEL PURSUIT 7000/8000
REEL PART NO.1190636/1190638



| KEY NO. | PART NO. | DESCRIPTION |
|---------|----------|---|
| 22 | 1204018 | 22-6000PUR Bail Pivot Cover Screw |
| 24 | 1204072 | 24-7000PUR Bail Wire Assembly |
| 24 | 1204073 | 24-8000PUR Bail Wire Assembly |
| 27 | 1204074 | 27-7000PUR Rotor (w/weight & screw) |
| 27 | 1204075 | 27-8000PUR Rotor (w/weight & screw) |
| 27A | 1204076 | 27A-7000PUR Bail Pivot Cover |
| 28 | 1204077 | 28-7000PUR Trip Lever |
| 28 | 1204078 | 28-8000PUR Trip Lever |
| 31 | 1204039 | 31-6000PUR Bail Arm Screw (2 req) |
| 32 | 1200520 | 32-6000SG Bail Spring |
| 34 | 1204042 | 34-6000PUR Bail Arm |
| 34C | 1191656 | 34C-7000SG Pivot Arm |
| 35 | 1203991 | 35-3000PUR Line Roller |
| 35A | 1203992 | 35A-3000PUR Line Roller Bushing |
| 36 | 1203993 | 36-3000PUR Bail Stud Screw |
| 38 | 1204084 | 38-7000PUR Rotor Nut |
| 38A | 1203995 | 38A-3000PUR Rotor Locking Plate Screw |
| 39 | 1204086 | 39-7000PUR Spool Shaft Assembly |
| 43 | 1204087 | 43-7000PUR Crosswind Block |
| 43A | 1191821 | 43A-7000SG Crosswind Block Plate |
| 43B | 1203997 | 43B-3000PUR Crosswind Block Plate Screw (2 req) |
| 44 | 1191845 | 44-5000SG Crosswind Block Screw (2 req) |
| 45 | 1204089 | 45-7000PUR Housing Cover |
| 46 | 1204054 | 46-5000PUR Housing Cover Screw (4 req) |
| 47 | 1204091 | 47-7000PUR Spool Complete |
| 47 | 1204092 | 47-8000PUR Spool Complete |
| 48 | 1211625 | 48-5000SG Click Tongue |
| 48A | 1211626 | 48A-5000SG Click Tongue Washer |
| 48B | 1211612 | 48B-5000SG Spool Click Screw |
| 49 | 1211627 | 49-5000SG Click Tongue Spring |
| 51 | 1287231 | 51-8000PUR Drag Retaining Ring |
| 52 | 1204094 | 52-7000PUR Drag Knob Assembly |
| 56 | 1192038 | 56-7000SG Drag Washer (5 req) |
| 57 | 1192046 | 57-7000SG Keyed Washer (3 req) |
| 58 | 1192055 | 58-7000SG Earred Washer (2 req) |
| 60 | 1192062 | 60-5000SG Thrust Washer |
| 95B | 1192186 | 95B-5000SG Rotor Locking Plate |
| 98C | 1192215 | 98C-5000SG Clutch/Sleeve Assembly |
| 98W | 1204095 | 98W-7000PUR Clutch Washer |
| 132 | 1192297 | 132-5000SG Roller Washer |
| 132A | 1192302 | 132A-3000SG Line Roller Washer (2 req) |
| 231 | 1192507 | 231-7000SG Crosswind Gear |
| 231B | 1204097 | 231B-7000PUR Screw Crosswind Gear |
| 231C | 1204098 | 231C-7000PUR Screw Crosswind Sleeve |
| 233 | 1204059 | 233-5000PUR Cover Assembly Bearing |

| KEY NO. | PART NO. | DESCRIPTION |
|---------|----------|--|
| 1 | 1204060 | 1-7000PUR Housing |
| 1 | 1204061 | 1-8000PUR Housing |
| 4 | 1190937 | 4-5000SG Dog |
| 5 | 1190966 | 5-5000SG Dog Spring |
| 6 | 1190979 | 6-5000SG Retaining Clip |
| 8 | 1204062 | 8-7000PUR Main Gear |
| 8A | 1204063 | 8A-7000PUR Shim |
| 10 | 1191068 | 10-7000SG A/R Holder |
| 11 | 1191087 | 11-7000SG Bushing |
| 12 | 1191090 | 12-5000SG A/R Bushing Spring |
| 15 | 1204064 | 15-7000PUR Handle Assembly |
| 19 | 1204065 | 19-7000PUR Pinion |
| 20 | 1204012 | 20-5000PUR Lower Pinion Ball Bearing |
| 20A | 1204013 | 20A-5000PUR Upper Pinion Ball Bearing |
| 20B | 1204068 | 20B-7000PUR Housing Ball Bearing |
| 20C | 1204069 | 20C-7000PUR Housing Cover Ball Bearing |
| 21 | 1192636 | 21-5000SG Bearing Retainer |
| 21A | 1204016 | 21A-5000PUR Bearing Retainer Screw (3 req) |
| 21B | 1192650 | 21B-5000SG Collar |