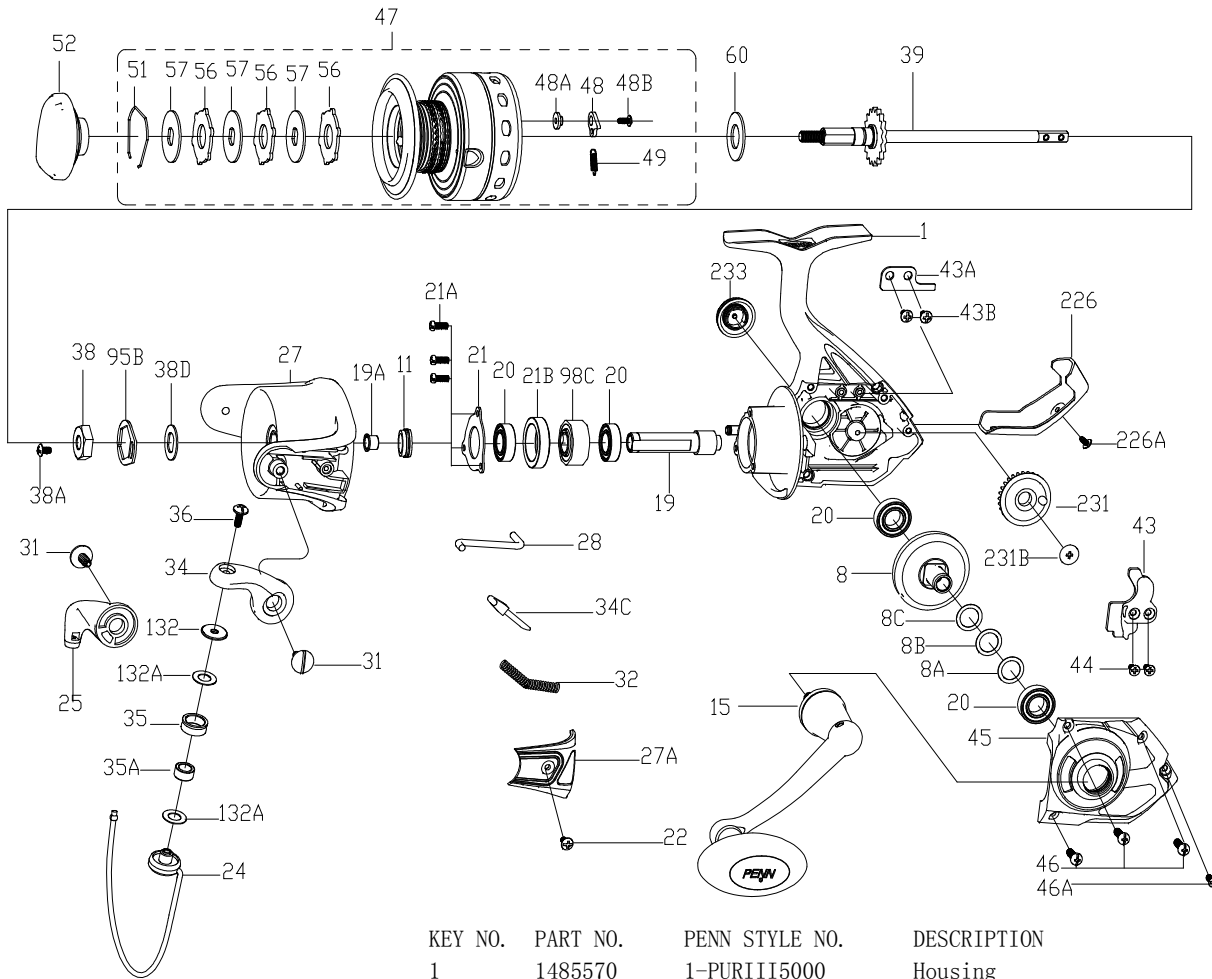




PARTS LIST FOR MODEL AS PURIII5000



| KEY NO. | PART NO. | PENN STYLE NO. | DESCRIPTION |
|---------|----------|----------------|-------------------------------|
| 1 | 1485570 | 1-PURIII5000 | Housing |
| 8 | 1191019 | 8-5000SG | Main Gear |
| 8A | 1191030 | 8A-5000SG | Shim |
| 8B | 1485572 | 8B-PURIII5000 | Shim B |
| 8C | 1485571 | 8C-PURIII5000 | Shim C |
| 11 | 1191085 | 11-5000SG | Bushing |
| 15 | 1365735 | 15-FRCII5000 | Handle Assembly |
| 19 | 1485498 | 19-PURIII5000 | Pinion Gear |
| 19A | 1191253 | 19A-5000SG | Pinion Bushing |
| 20 | 1204012 | 20-5000PUR | Ball Bearing (4 req) |
| 21 | 1192636 | 21-5000SG | Bearing Retainer |
| 21A | 1204016 | 21A-5000PUR | Bearing Retainer Screw(3 req) |

407-PURIII5000 Rev. 1 27-2-18

1481297

| KEY NO. | PART NO. | PENN STYLE NO. | DESCRIPTION |
|---------|----------|-----------------|-------------------------------|
| 21B | 1324209 | 21B-BTLII5000 | Collar |
| 22 | 1204018 | 22-6000PUR | Bail Pivot Cover Screw |
| 24 | 1365736 | 24-FRCII5000 | Bail Wire |
| 25 | 1308093 | 25-CFT5000 | Bail Holder |
| 27 | 1485496 | 27-PURIII5000 | Rotor |
| 27A | 1365738 | 27A-FRCII5000 | Bail Pivot Cover |
| 28 | 1365739 | 28-FRCII5000 | Trip Lever |
| 31 | 1365740 | 31-FRCII5000 | Bail Arm Screw (2 req) |
| 32 | 1308101 | 32-CFT5000 | Bail Spring |
| 34 | 1308102 | 34-CFT5000 | Bail Arm |
| 34C | 1191652 | 34C-5000SG | Pivot Arm |
| 35 | 1308066 | 35-CFT3000 | Line Roller |
| 35A | 1308067 | 35A-CFT3000 | Line Roller Bushing |
| 36 | 1191699 | 36-3000SG | Bail Stud Screw |
| 38 | 1204049 | 38-5000PUR | Rotor Nut |
| 38A | 1365741 | 38A-FRCII5000 | Rotor Locking Plate Screw |
| 38D | 1308104 | 38D-CFT5000 | Rotor Nut Washer |
| 39 | 1308105 | 39-CFT5000 | Main Shaft Assembly |
| 43 | 1485579 | 43-PURIII5000 | Crosswind Block |
| 43A | 1191820 | 43A-5000SG | Crosswind Block Plate |
| 43B | 1203997 | 43B-3000PUR | Screw (2 req) |
| 44 | 1191845 | 44-5000SG | Crosswind Block Screw (2 req) |
| 45 | 1485573 | 45-PURIII5000 | Housing Cover |
| 46 | 1485574 | 46-PURIII5000 | Housing Cover Screw (3 req) |
| 46A | 1485575 | 46A-PURIII5000 | Housing Cover Screw |
| 47 | 1485495 | 47-PURIII5000 | Spool Assembly |
| 48 | 1211625 | 48-5000SG | Click Tongue |
| 48A | 1211626 | 48A-5000SG | Click Tongue Washer |
| 48B | 1192658 | 22-2000SG | Spool Click Screw |
| 49 | 1211627 | 49-5000SG | Click Tongue Spring |
| 51 | 1308112 | 51-CFT5000 | Drag Retaining Ring |
| 52 | 1485493 | 52-PURIII5000 | Drag Knob Assembly |
| 56 | 1485494 | 56-PURIII5000 | Drag Washer (3 req) |
| 57 | 1192044 | 57-5000SG | Keyed Washer (3 req) |
| 60 | 1211629 | 60-5000BTL | Thrust Washer |
| 95B | 1308115 | 95B-CFT5000 | Rotor Locking Plate |
| 98C | 1485497 | 98C-PURIII5000 | Clutch/Sleeve Assembly |
| 132 | 1192297 | 132-5000SG | Roller Washer |
| 132A | 1192302 | 132A-3000SG | Line Roller Washer (2 req) |
| 226 | 1485576 | 226-PURIII5000 | Rear Cover |
| 226A | 1485216 | 226A-PURIII3000 | Rear Cover Screw |
| 231 | 1485577 | 231-PURIII5000 | Crosswind Gear |
| 233 | 1485569 | 233-PURIII5000 | Bearing Cover Assembly |
| 231B | 1485578 | 231B-PURIII5000 | Screw Crosswind Gear |