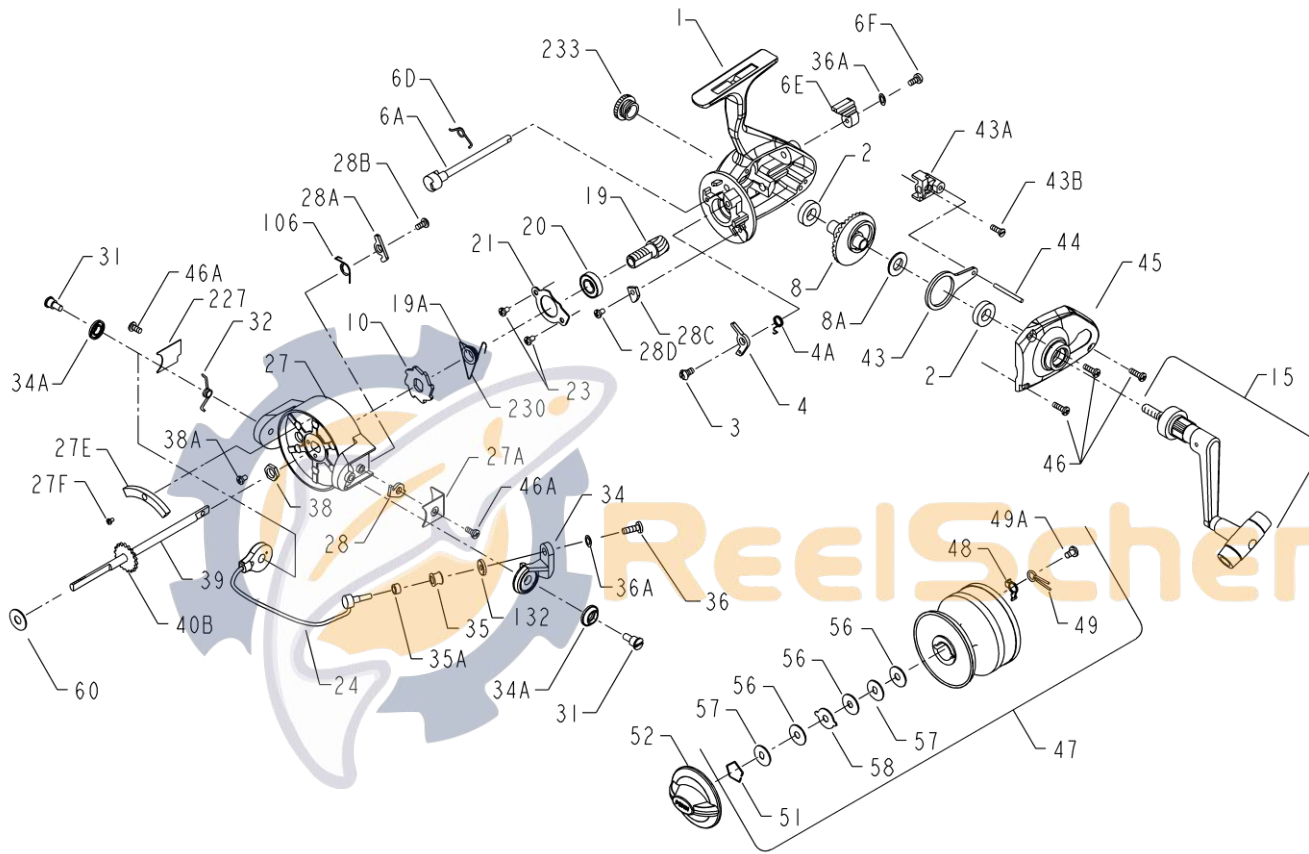


PENN PARTS LIST FOR MODEL 104CS (1152136)



| KEY NO. | PART NO. | DESCRIPTION |
|---------|-----------|----------------------------|
| 1 | 001 104CS | Housing w/Bushing & Emblem |
| 2 | 002 103 | Housing Bushing (2 req.) |
| 3 | 003 104 | Dog Mounting Screw |
| 4 | 004 104CS | Dog |
| 4A | 004A104CS | Dog Spring |
| 6A | 006A104CS | Eccentric |

| KEY NO. | PART NO. | DESCRIPTION |
|---------|-----------|--------------------------------|
| 6D | 006D104 | Eccentric Spring |
| 6E | 006E103 | Eccentric Lever |
| 6F | 006F101 | Eccentric Lever Mounting Screw |
| 8 | 008 104 | Main Gear Assembly |
| 8A | 008A103 | Main Gear Shim |
| 10 | 010 104 | Anti-Reverse Ratchet |
| 15 | 015 104CS | Handle (Complete) |
| 19 | 019 104 | Pinion Gear |
| 19A | 019A104CS | Pinion Gear Spacer |
| 20 | 020 104 | Ball Bearing |
| 21 | 021 104 | Bearing Cover |
| 23 | 023 103 | Bearing Cover Screw (2 req.) |
| 24 | 024 104CS | Bail Wire |
| 27 | 027 104CS | Rotor Cup |
| 27A | 027A104 | Rotor End Cover |
| 27E | 027E104CS | Balance Weight |
| 27F | 027F104CS | Balance Weight Screw |
| 28 | 028 104 | Trip Lever |
| 28A | 028A104 | Cam Lever |
| 28B | 028B103 | Cam Lever Mounting Screw |
| 28C | 028C104 | Trip Cam |
| 28D | 046A103 | Cam Mount Screw |
| 31 | 031 103 | Bail Arm Screw |
| 32 | 032 104 | Bail Spring |
| 34 | 034 104CS | Bail Arm |
| 34A | 034A103 | Bail Arm Spacer |
| 35 | 035 103CS | Line Roller |
| 35A | 035A103CS | Line Roller Bushing |
| 36 | 036 103CS | Bail Stud Screw |
| 36A | 036A103 | Lock Washer (2 req.) |
| 38 | 038 104 | Rotor Nut |
| 38A | 038A103CS | Rotor Nut Screw |
| 39 | 039 104CS | Crosswind Shaft |
| 40B | 040B104CS | Click Ratchet |
| 43 | 043 104 | Crosswind Arm |
| 43A | 043A104CS | Crosswind Block |
| 43B | 043B105 | Crosswind Arm Screw |
| 44 | 044 104 | Crosswind Arm Pin |
| 45 | 045 104CS | Housing Cover w/Bushing |
| 46 | 046 103 | Housing Cover Screw (3 req.) |
| 46A | 046A103 | Rotor End Cover Screw (2 req.) |
| 47 | 047 104CS | Spool (Complete) |
| 48 | 048 103CS | Click Tongue |
| 49 | 049 103CS | Click Spring |
| 49A | 022 103CS | Click Spring Screw |
| 51 | 051 104 | Retaining Ring |
| 52 | 052 104CS | Drag Knob |
| 56 | 056T104 | Drag Washer (Teflon) (3 req.) |
| 57 | 057 104 | Drag Washer (Keyed) (2 req.) |
| 58 | 058 104 | Drag Washer (Ear) |
| 60 | 060 103 | Thrust Washer (Teflon) |
| 106 | 106 104 | Cam Lever Spring |
| 132 | 132 103CS | Roller Washer |
| 227 | 227 104 | Bail Spring Cover |
| 230 | 230 104CS | Silent Dog Spring |