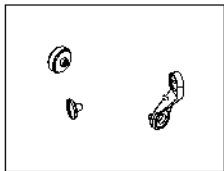


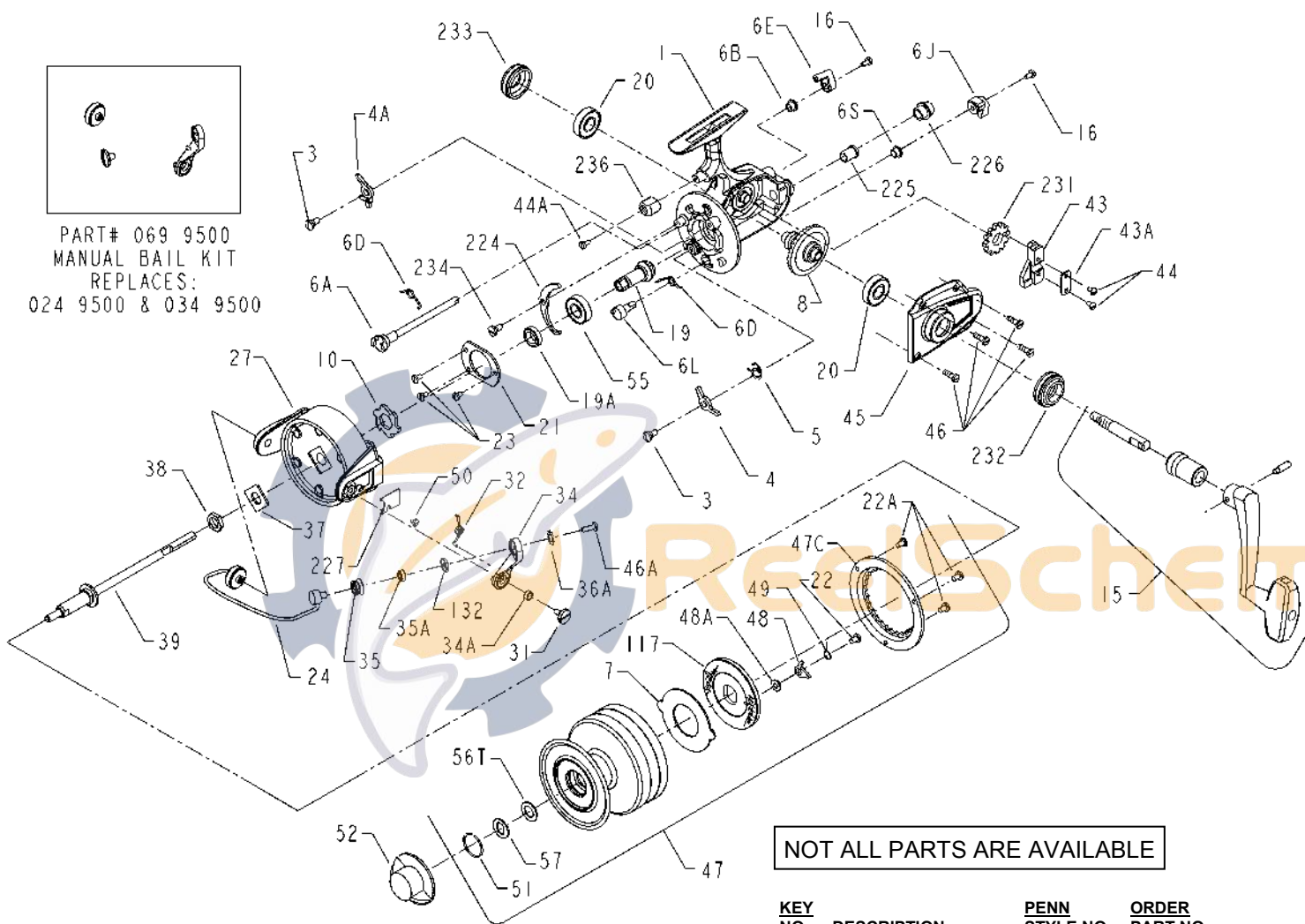


# PARTS LIST FOR MODEL 9500SS

REEL ASSEMBLY NO 1151145



PART# 069 9500  
MANUAL BAIL KIT  
REPLACES:  
024 9500 & 034 9500



NOT ALL PARTS ARE AVAILABLE

KEY NO.	DESCRIPTION	PENN STYLE NO.	ORDER PART NO.
15	Handle Assembly	015N950M	1181512
16	Eccentric Screw (2 req.)	016 910	1181585
19	Pinion	019N9500	1181753
19A	Pinion Spacer	019A9500	1181740
20	Ball Bearing (2 req.)	020 704	1181790
21	Bearing Cover	021 9500	1181885
22	Spool Click Screw	022 9500	1181926
22A	Drag Cover Screw (3 req.)	022A9500	1181929
23	Bearing Cover Screw (3 req.)	023 750	1181953
24	Bail Wire Assembly	024 9500	1182080
27	Rotor	027 9500	1182291
31	Bail Arm Screw	031 750M	1182679
32	Bail Arm Spring	032 750	1182739
34	Bail Arm	034 9500	1182836
34A	Bail Arm Bushing	034A750	1182847
35	Line Roller	035 9500	1182948
35A	Line Roller Bearing	035A706	1182963
36A	Lock Washer	036A750	1183032
37	Rotor Washer	037 9500	1183091
38	Rotor Nut	038 9500	1183160
39	Spool Shaft	039 9500	1183240
43	Spool Block	043 9500	1183414
43A	Crosswind Block Plate	043A750	1183427
44	Crosswind Block Screw (2 req.)	044 750	1183462
44A	Trip Bumper Screw	044 750	1183462
45	Housing Cover	045 9500	1183539
46	Housing Cover Screw (4 req.)	046 9500	1183581
46A	Bail Stud Screw	046A9500	1183587
47	Spool (Complete)	047 9500	1183676
47C	Drag Cover	047C9500	1183689
48	Click Tongue	048 9500	1183718
48A	Click Tongue Washer	048A9500	1183724
49	Click Tongue Spring	049 9500	1183743
50	Bail Spring Cover Screw	050 712	1183766
51	Retaining Ring	051 704	1183795
52	Drag Knob	052 9500	1183841
55	Ball Bearing	055 050	1183876
56T	Drag Washer (Teflon®)	056T704	1183918
57	Drag Washer Keyed	057 704	1183937
69	Manual Bail Kit (Optional)	069 9500	1184121
117	Drag Washer/Drive Plate	117 9500	1184488
132	Roller Washer	132 706	1184594
224	Transfer Lever	224 750	1184994
225	Crosswind Shaft Bushing	225 9500	1185008
226	Bushing Cap Screw	226 9500	1185022
227	Bail Spring Cover	227 9500	1185057
231	Crosswind Gear	231 9500	1185098
232	Bearing Cover (Open)	232 750	1185124
233	Bearing Cover (Closed)	233 750	1185150
234	Transfer Lever Screw	234 750	1185153
236	Trip Bumper	236 750	1185156

KEY NO.	DESCRIPTION	PENN STYLE NO.	ORDER PART NO.
1	Housing	001 9500	1180559
3	Dog Screw (2 req.)	003 750	1180736
4	Dog	004 750	1180787
4A	Silent Dog	004A750	1180801
5	Click Dog Spring	005 704	1180877
6A	Upper Eccentric	006A750	1180959
6B	Upper Eccentric Liner	006B750	1180967
6D	Eccentric Spring (2 req.)	006D710	1180977
6E	Anti-Reverse Lever	006E750	1180987
6J	Silent Dog Lever	006J750	1180996
6L	Silent Eccentric	006L750	1180998
6S	Silent Eccentric Liner	006B700Z	1180965
7	Metal Drag Washer	007 4FR	1181016
8	Main Gear	008N9500	1181137
10	Ratchet	010 9500	1181214