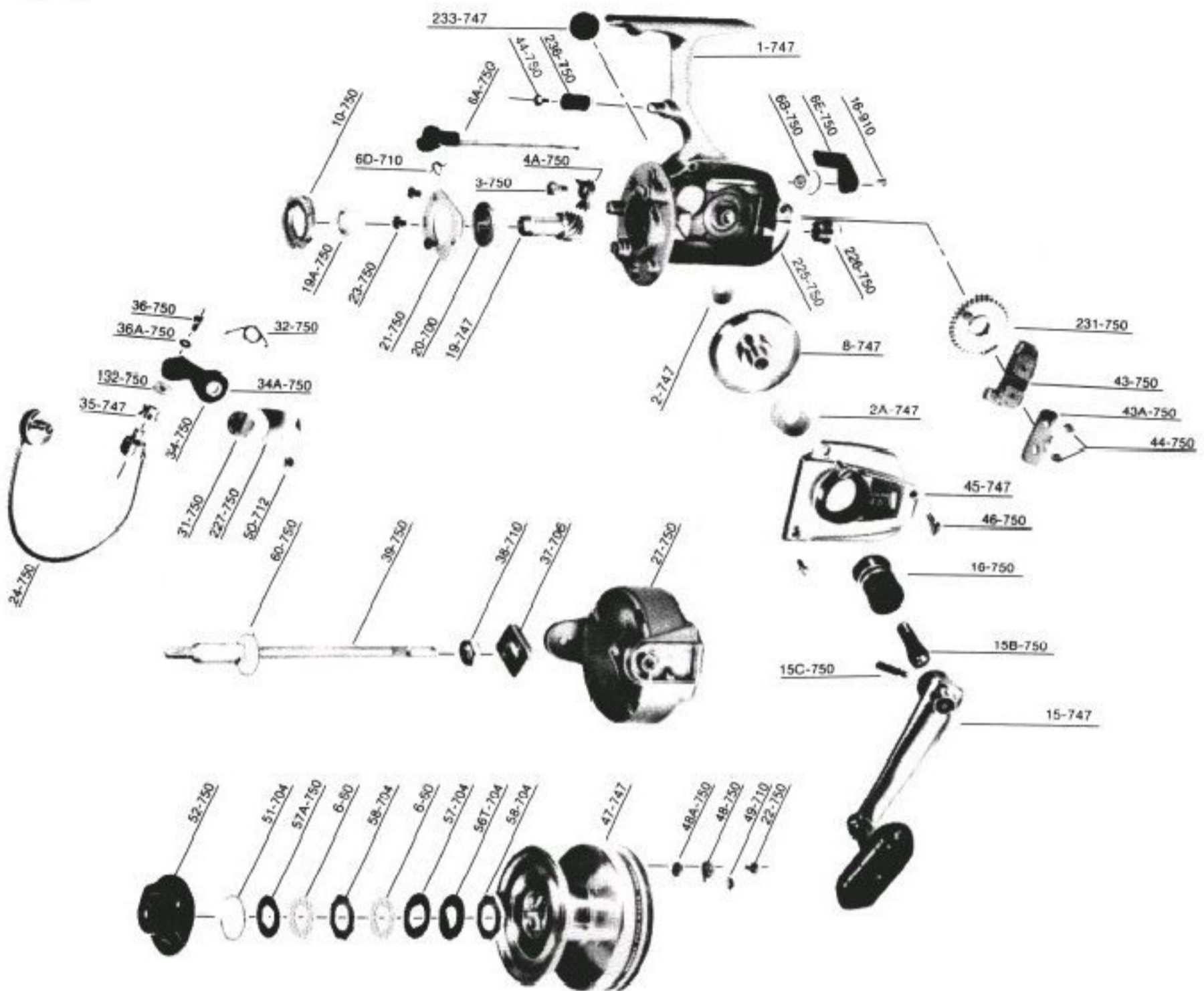




PARTS LIST FOR MODEL 747



Penn Reel Parts list for:

Model: 747

KEY PART

NO	NO.	DESCRIPTION
1	1-747	HOUSING
2	2-747	BEARING, HOUSING
2A	2A-747	BEARING, COVER PLATE
3	3-750	DOG SCREW
4A	4A-750	SILENT
6	6-60	DRAG WASHER HT 100
6A	6A-750	ECCENTRIC
6B	6B-750	ECCENTRIC LINER
6D	6D-710	ECCENTRIC SPRING
6E	6E-750	ANTI-REVERSE LEVER
8	8-747	MAIN GEAR
10	10-750	RATCHET
15	15-747	HANDLE
15B	15B-750	STANDARD PIVOT
15C	15C-750	PIVOT SCREW
16	16-750	COLLAR
16A	16-910	ECCENTRIC SCREW
19	19-747	PINION
19A	19A-750	PINION SPACER
20	20-700	BEARING
21	21-750	BEARING COVER
22	22-750	TRIP BUMPER SCREW
23	23-750	BEARING COVER SCREW
24	24-750	BAIL WIRE
27	27-750	ROTOR CUP
31	31-750	BAIL ARM SCREW
32	32-750	BAIL ARM SPRING
34	34-750	BAIL ARM
34A	34A-750	BAIL ARM BUSHING

KEY PART

NO	NO.	DESCRIPTION
35	35-747	LINE ROLLER
36	36-750	BAIL STUD SCREW
36A	36A-750	BAIL STUD SCREW WASHER
37	37-706	ROTOR WASHER
38	38-704	ROTOR NUT
39	39-750	CROSSWIND SHAFT
43	43-750	CROSSWIND BLOCK
43A	43A-750	CROSSWIND BLOCK PLATE
44	44-750	CROSSWIND BLOCK SCREW
45	45-747	HOUSING COVER
46	46-750	HOUSING COVER SCREW
47	47-747	SPOOL (COMPLETE)
48	48-750	CLICK TONGUE
48A	48A-750	CLICK TONGUE WASHER
49	49-710	CLICK TONGUE SPRING
50	50-712	BAIL SPRING COVER SCREW
51	51-704	RETAINING RING
52	52-750	DRAG KNOB
56T	56T-704	DRAG WASHER
57	57-704	DRAG WASHER (KEYED) SMALL DIA
57A	57A-750	DRAG WASHER (KEYED) LARGE DIA
58	58-704	DRAG WASHER (OCTAGON)
60	60-750	THRUST WASHER
132	132-750	ROLLER WASHER
225	225-750	CROSSWIND SHAFT BUSHING
227	227-750	BAIL SPRING COVER
231	231-750	CROSSWIND GEAR
233	233-747	PLUG, HOUSING
236	236-750	TRIP BUMPER