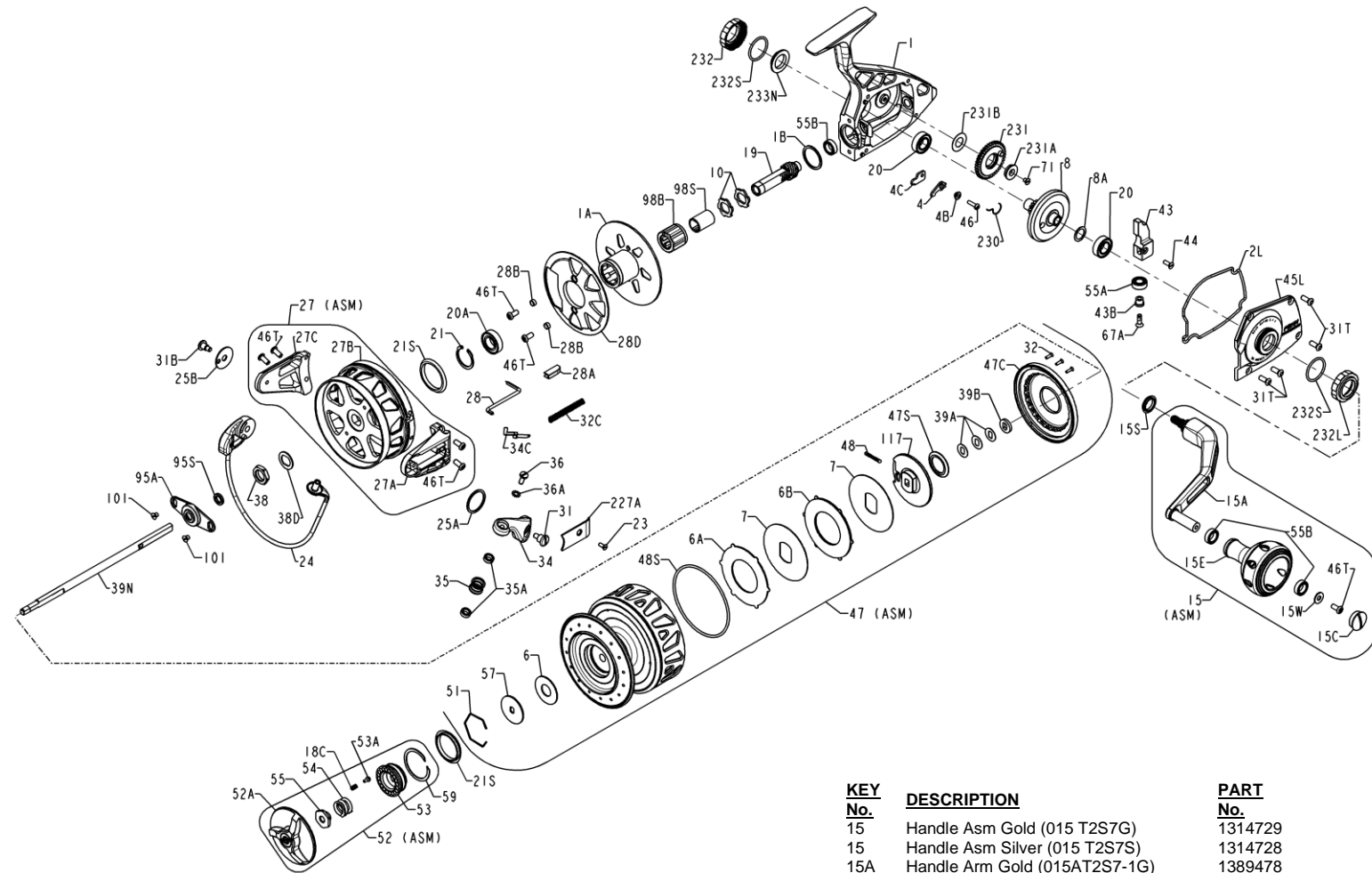




# TRQII9500-G (Gold) 1339437 & TRQII9500-S (Silver) 1403981



KEY No.	DESCRIPTION	PART No.
28	Trip Lever (028 T2S7)	1454740
28A	Guide (028AT2S7)	1314743
28B	Bushing (028BTS7)(2 req)	1200338
28D	Friction Ring (028DTS9)	1200413
31	Bail Arm Screw (031 T2S7)	1314744
31B	Cam Arm Screw (031BT2S7)	1318479
31T	Screw (031TT2S7)(4req)	1314745
32	Flat Head Screw (032 975LD) (3req)	1182747
32C	Bail Spring (032 CFT8000)	1313874
34	Bail Arm- Gold (034 T2S7G)	1314747
34	Bail Arm- Silver (034 T2S7S)	1314746
34C	Pivot Arm (034CSSV7500)	1277164
35	Line Roller (035 TS7)	1205239
35A	Bearing (035A950M) (2 req)	1182951
36	Line Roller Screw (036 750)	1183016
36A	Washer- External Tooth Lock(036A750)	1183032
38	Nut- Rotor (038 9500)	1183160
38D	Washer- Rotor Keyed (038DSSV7500)	1277168
39A	Shim- Double D (039AT2S7) (as needed)	1314748
39B	Washer- Double D (039BT2S7)	1314749
39N	Spool Shaft (039NTS7)	1251997
43	Crosswind Block (043 T2S7)	1406598
43B	Bushing (043BTS7)	1192690
44	Screw (044 TS7)	1225769
45L	Side Plate Asm Gold (045LT2S9G)	1314821
45L	Side Plate Asm Silver (045LT2S9S)	1314820
46	Screw (046 4300)	1183567
46T	Screw (046TT2S7)(7 req)	1191914
47	Spool Assembly Gold (047 T2S9G)	1420139
47	Spool Assembly Silver (047 T2S9S)	1420140
47C	Drag Cover (047CT2S7)	1314755
47S	Drag Drive Plate Seal (047SSSV5500)	1277082
48	Click Tongue Asm (048 5600)	1183710
48S	O-Ring (048STS7)	1211091
51	Retainer (051 8000CV2)	1245795
52	Drag Knob Assembly Gold(052 T2S7G)	1314757
52	Drag Knob Assembly Silver (052 T2S7S)	1314756
52A	Drag Knob - Gold (052 T2S7-1G)	1337170
52A	Drag Knob - Silver (052 T2S7-1S)	1337169
53	Drag Knob Insert (053 T2S7)	1318910
53A	Pin- Drag Knob Click (053A5600)	1183846
54	Spring- Compression (054 704)	1192020
55	Drag Nut (055 704)	1192028
55A	Bearing (055ATS7)	1203081
55B	Bearing (055 TS7)(3 req)	1192029
57	Drag Washer Keyed (057 760)	1192695
59	Ring- Retaining (059 TS7)	1233962
67A	Screw Flat Head(067A070)	1184111
71	Flat Head Screw (071 TS7)	1200354
95A	Rotor Nut Cover (095AT2S7)	1314758
95S	Seal- Spool Shaft (095STS7)	1192188
98B	Bearing- Clutch (098B525MAG2)	1239046
98S	Sleeve- Clutch (098S525MAG2)	1239047
101	Flat Head Screw (101 050S) (2 req)	1184404
117	Drive Plate (117 T2S7)	1314759
227A	Rotor Arm Cover Gold (227AT2S7G)	1314761
227A	Rotor Arm Cover Silver (227AT2S7S)	1314760
230	Spring- Dog (230 T2S7)	1314762
231	Gear- Crosswind (231 TS7)	1192740
231A	Bushing- Crosswind Gear (231ATS7)	1192741
231B	Washer (231BT2S7)	1192742
232	Bearing Cover Gold (232 TS7G)	1200359
232	Bearing Cover Silver (232 TS7S)	1235634
232L	Bearing Cover LH Gold (232LTS7G)	1253565
232L	Bearing Cover LH Silver(232LTS7S)	1390209
232S	O-Ring (232ST2S7) (2 req)	1314763
233N	Cap-Bearing Gold (233NTS7G)	1253568
233N	Cap-Bearing Silver (233NTS7S)	1234373

**WARNING:** Cancer and Reproductive Harm – [www.P65Warnings.ca.gov/products](http://www.P65Warnings.ca.gov/products)

KEY No.	DESCRIPTION	PART No.
1	Housing Asm- Gold (001 T2S7G)	1347119
1	Housing Asm- Silver (001 T2S7S)	1347068
1A	Clutch Housing Gold (001AT2S9G)	1314805
1A	Clutch Housing Silver (001AT2S9S)	1314804
1B	Rubber Flat Washer (001BT2S7-1)	1435254
2L	Side Plate Seal (002LT2S7)	1314721
4	Dog (004 T2S7)	1314722
4B	Dog Bushing (004BT2S7)	1314723
4C	Dog Plate (004CT2S7)	1314724
6	Washer- Drag (006 309)	1180917
6A	Drag Washer Asm 1 Sided (006 T2S7-1)	1415388
6B	Drag Washer Asm 2 Sided (006 T2S7-2)	1415389
7	Keyed Drag Washer (007 TS7) (2 req)	1192588
8	Gear Assembly (008 T2S9)	1314806
8A	Shim 002" (008ATS7-2) (as needed)	1229048
8A	Shim 004" (008ATS7-4) (as needed)	1229049
8A	Shim 008" (008ATS7-8) (as needed)	1229050
10	Ratchet (010 T2S7) (2 req)	1314727

KEY No.	DESCRIPTION	PART No.
15	Handle Asm Gold (015 T2S7G)	1314729
15	Handle Asm Silver (015 T2S7S)	1314728
15A	Handle Arm Gold (015AT2S7-1G)	1389478
15A	Handle Arm Silver (015AT2S7-1S)	1410945
15C	Handle Cap Screw Gold (015CT2S7G)	1323529
15C	Handle Cap Screw Silver(015CT2S7S)	1323528
15E	Handle Knob- Gold (015ET2S7G)	1318906
15E	Handle Knob- Silver (015ET2S7S)	1318905
15S	Seal (015STS7)	1200419
15W	Washer- Flat (015WT2S7)	1347059
18C	Spring- Compression (018C015KG)	1181632
19	Pinion (019NT2S9)	1449575
20	Bearing (020 6500)(2 req)	1181789
20A	Bearing (020 TS7)	1191260
21	Ring- Retaining (021 TS7)	1192641
21S	Seal (021STS7) (2 req)	1191276
23	Screw (023 T2S7)	1316317
24	Bail Wire Assembly (024 T2S9)	1314808
25A	Bail Arm Washer (025AT2S7)	1314733
25B	Bail Cam Washer (025BT2S7)	1317508
27	Rotor Assembly Gold (027 T2S9G)	1415396
27	Rotor Assembly Silver (027 T2S9S)	1415397
27A	Roller Arm Gold (027AT2S9G)	1314815
27A	Roller Arm Silver (027AT2S9S)	1314814
27B	Rotor Cup Gold (027BT2S9G)	1314812
27B	Rotor Cup Silver (027BT2S9S)	1314811
27C	Cam Arm Gold (027CT2S9G)	1314818
27C	Cam Arm Silver (027CT2S9S)	1314817