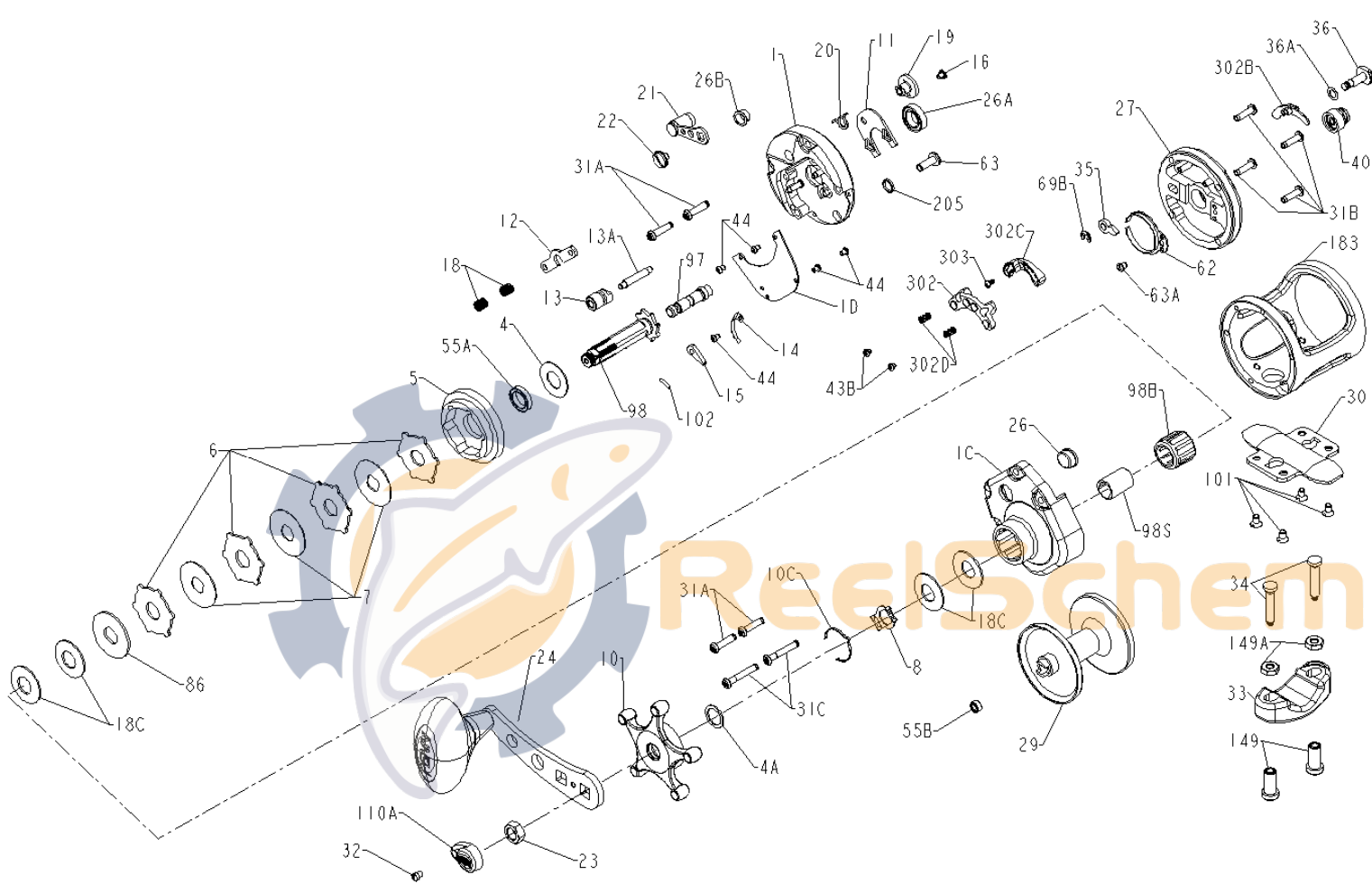




PARTS LIST FOR MODEL TRQ100



KEY NO.	100T PART NO.	DESCRIPTION
1	001 100T	Right Side Plate
1C	001C100T	Right Side Cover Assembly
1D	001D100T	Backing Plate
4	004 060	Graphite Washer
4A	004 300T	Graphite Washer
5	005 100T	Main Gear
6	006 525MAG	Drag Washer (4 req)
7	007 100T	Metal Drag Washer (3 req)
8	008 113HN	Spring Retainer
10	010 300T	Drag Star
10C	010C113HN	Detent Spring
11	011 100T	Eccentric Jack
12	012 300T	Pinion Yoke
13	013 100T	Pinion
13A	013A113HN	Pinion Pin
14	014 300T	Dog Spring
15	015 200T	Dog, Anti-reverse
16	016 200T	Eccentric Jack Screw
18	018 060	Clutch Spring (2 req)
18C	018 505	Tension Washer (4 req)
19	019 200T	Eccentric
20	020 321LH	Eccentric Spring
21	021 200T	Eccentric Lever Assembly
22	022 060CH	Screw, Sems Type (Ecc Lever)
23	023 555	Handle Nut
24	024 200T	Handle Assembly
26	026 113HN	Bearing Cup Assembly
26A	026A2.5FR	Ball Bearing
26B	026 200T	Eccentric Bushing
27	027 100T	Left Side Plate Assembly
29	029L100T	Spool Assembly
30	030 016VS	Stand
31A	031TA200T	Screw R.S. (4 req)
31B	031TB300T	Screw L.S. (4 req)
31C	031TC300T	Screw R.S. (2 req)
32	039 010	Screw
33	033 113	Rod Clamp
34	034 016VS	Rod Clamp Screw (2 req)
35	035 155	Click Tongue
36	036 300T	Click Button
36A	036A300T	Washer, Click Button
40	040 300T	Bearing Cup Assembly, L.S.
43B	043B965	Magnet Housing Screw (2 req)
44	044 300T	Screw (5 req)
55A	055 113HN	Ball Bearing, (Main Gear)
55B	055 910	Ball Bearing (Spool Asm)
62	062 209	Click Spring
63	063 030T	Screw, (Gear Stud)
63A	063 209	Screw, (Click Spring)
69B	069B600	Retaining Ring
86	086 049H	Washer, Keyed
97	097 300T	Bridge, (Gear) Stud
98	098 300T	Gear Sleeve
98B	098B525	Clutch Bearing
98S	098S525	Clutch Bearing Sleeve
101	101 080ST	Screw, (Stand), (4 req)
102	102 060	Pin, Gear Sleeve
110A	110A555	Handle Nut Cap
149	149 045	Rod Clamp Nut (2 req)
149A	149 200	Hex Nut (2 req)
183	183 100T	Frame
183	183 100TE	Frame (for European models)
205	205 300T	Washer, Gear Stud
302	302 525MAG	Magnet Housing
302B	302B525MAG	Magnet Control Button
302C	302C525MAG	Magnet Ramp
302D	302D525MAG	Magnet Spring (2 req.)
303	303 525MAG	Magnet Button Screw