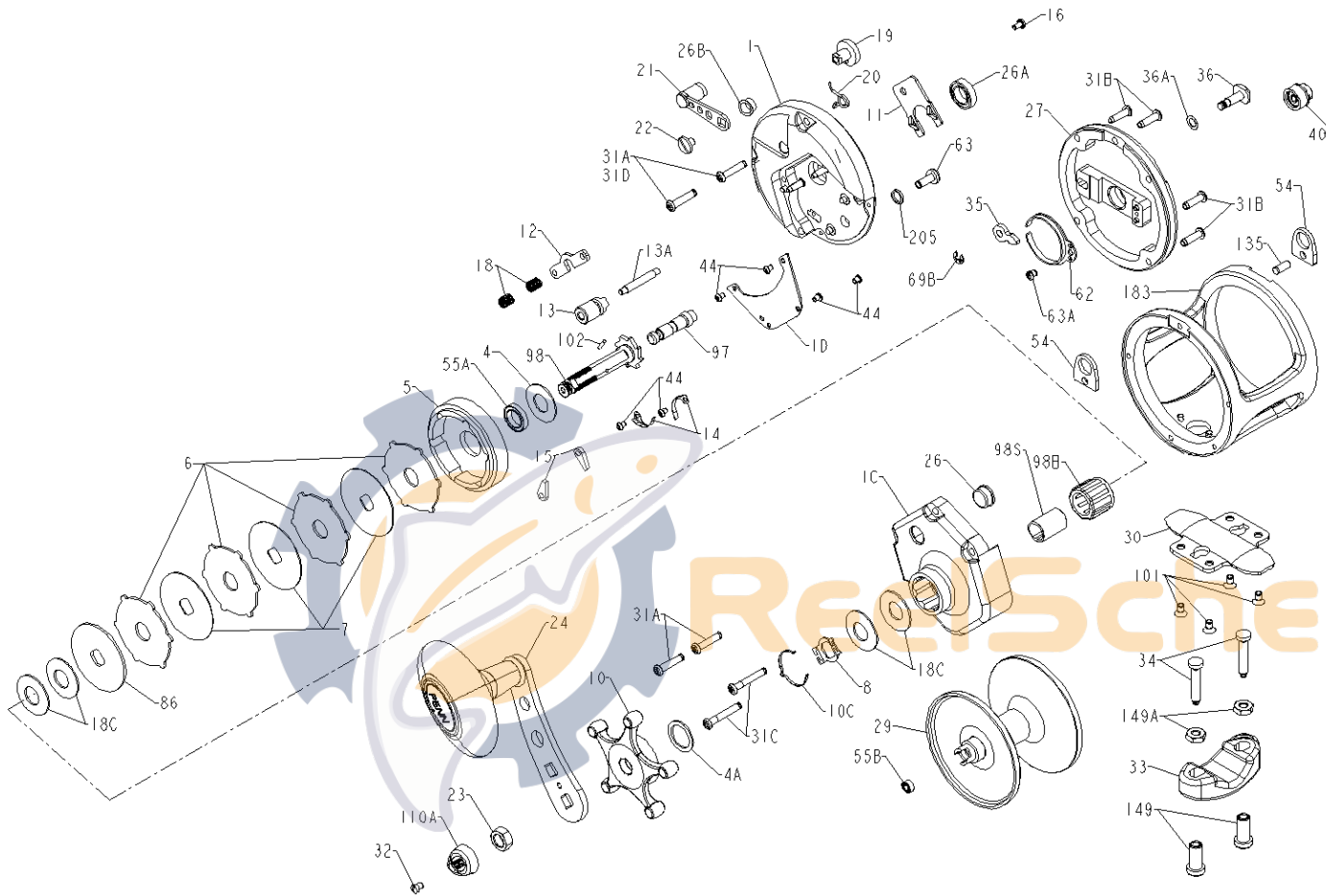




**PARTS LIST FOR MODELS TRQ200 & TRQ300**



| <u>KEY NO.</u> | <u>200T PART NO.</u> | <u>300T PART NO.</u> | <u>DESCRIPTION</u>                    |
|----------------|----------------------|----------------------|---------------------------------------|
| 1              | 001 200T             | 001 300T             | Right Side Plate                      |
| 1C             | 001C200T             | 001C300T             | Cover, Right Side                     |
| 1D             | 001D200T             | 001D300T             | Backing Plate                         |
| 4              | 004 060              | 004 060              | Graphite Washer                       |
| 4A             | 004 300T             | 004 300T             | Graphite Washer                       |
| 5              | 005 200T             | 005 300T             | Main Gear                             |
| 6              | 006 300T             | 006 300T             | Drag Washer (4 req)                   |
| 7              | 007 300T             | 007 300T             | Metal Drag Washer (3 req)             |
| 8              | 008 113HN            | 008 113HN            | Spring Retainer                       |
| 10             | 010 300T             | 010 300T             | Drag Star                             |
| 10C            | 010C113HN            | 010C113HN            | Detent Spring                         |
| 11             | 011 300T             | 011 300T             | Eccentric Jack                        |
| 12             | 012 300T             | 012 300T             | Pinion Yoke                           |
| 13             | 013 200T             | 013 300T             | Pinion                                |
| 13A            | 013A200T             | 013A200T             | Pinion Pin                            |
| 14             | 014 300T             | 014 300T             | Dog Spring (2 req)                    |
| 15             | 015 200T             | 015 200T             | Dog, Anti-reverse (2 req)             |
| 16             | 016 200T             | 016 200T             | Eccentric Jack Screw                  |
| 18             | 018 060              | 018 060              | Clutch Spring (2 req)                 |
| 18C            | 018 505              | 018 505              | Tension Washer (4 req)                |
| 19             | 019 200T             | 019 300T             | Eccentric                             |
| 20             | 020 321LH            | 020 155              | Eccentric Spring                      |
| 21             | 021 200T             | 021 300T             | Eccentric Lever Assembly              |
| 22             | 022 060CH            | 022 060CH            | Screw, Sems Type (Eccentric Lever)    |
| 23             | 023 555              | 023 555              | Handle Nut                            |
| 24             | 024 200T             | 024S113HN            | Handle Assembly                       |
| 26             | 026 113HN            | 026 113HN            | Bearing Cup Assembly                  |
| 26A            | 026A2.5FR            | 026A2.5FR            | Ball Bearing                          |
| 26B            | 026 200T             | 026 200T             | Eccentric Bushing                     |
| 27             | 027 200T             | 027 300T             | Left Side Plate Assembly              |
| 29             | 029L200T             | 029L300T             | Spool Assembly                        |
| 30             | 030 016VS            | 030 016VS            | Stand                                 |
| 31A            | 031TA300T            | 031TA300T            | Screw R.S. (2 req 200T)(4 req 300T)   |
| 31B            | 031TB300T            | 031TB300T            | Screw L.S. (4 req)                    |
| 31C            | 031T015KG            | 031TC300T            | Screw R.S. (2 req)                    |
| 31D            | 031TA200T            | ----                 | Screw R.S. (2 req) (200T Only)        |
| 32             | 039 010              | 039 010              | Screw                                 |
| 33             | 033 113              | 033 113              | Rod Clamp                             |
| 34             | 034 016VS            | 034 016VS            | Rod Clamp Screw (2 req)               |
| 35             | 035 060              | 035 060              | Click Tongue                          |
| 36             | 036 300T             | 036 300T             | Click Button                          |
| 36A            | 036A300T             | 036A300T             | Washer, Click Button                  |
| 40             | 040 300T             | 040 300T             | Bearing Cup Assembly, L.S.            |
| 44             | 044 300T             | 044 300T             | Screw (5 req 200T)(6 req 300T)        |
| 54             | ----                 | 054 016S             | Harness Lug (2 req) (300T Only)       |
| *              | ----                 | *054A016VS           | *Harness Lug Plug (2 req) (300T Only) |
| 55A            | 055 113HN            | 055 113HN            | Ball Bearing, (Main Gear)             |
| 55B            | 055 910              | 055 910              | Ball Bearing (Spool Asm)              |
| 62             | 062 309              | 062 309              | Click Spring                          |
| 63             | 063 030T             | 063 030T             | Screw, (Gear Stud)                    |
| 63A            | 063 209              | 063 209              | Screw, (Click Spring)                 |
| 69B            | 069B600              | 069B600              | Retaining Ring                        |
| 86             | 086 300T             | 086 300T             | Washer, Keyed                         |
| 97             | 097 300T             | 097 300T             | Bridge, (Gear) Stud                   |
| 98             | 098 300T             | 098 300T             | Gear Sleeve                           |
| 98B            | 098B525              | 098B525              | Clutch Bearing                        |
| 98S            | 098S525              | 098S525              | Clutch Bearing Sleeve                 |
| 101            | 101 080ST            | 101 080ST            | Screw, (Stand), (4 req)               |
| 102            | 102 060              | 102 060              | Pin, Gear Sleeve                      |
| 110A           | 110A555              | 110A555              | Handle Nut Cap                        |
| 135            | ----                 | 135A080              | Dowel Pin, (Lug) (300T Only)          |
| 149            | 149 045              | 149 045              | Rod Clamp Nut (2 req)                 |
| 149A           | 149 200              | 149 200              | Hex Nut (2 req)                       |
| 183            | 183 200T             | 183 300T             | Frame                                 |
| 183            | 183 200TE            | 183 300TE            | Frame (for European models)           |
| 205            | 205 300T             | 205 300T             | Washer, Gear Stud                     |

\* = Not Shown