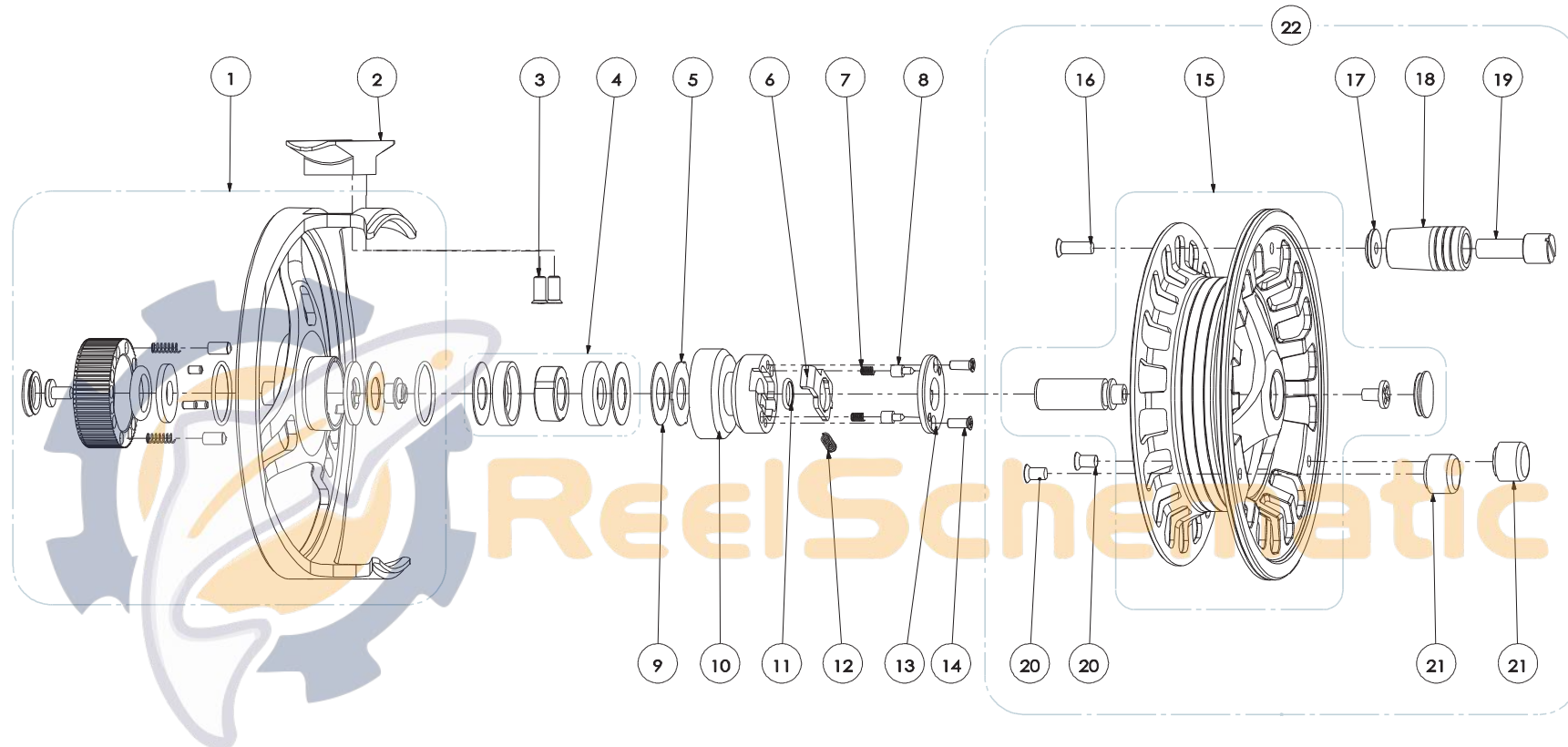
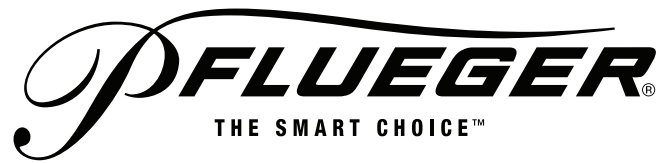


# Patriarch™ Parts List



ITEM	DESCRIPTION	PART NO.				
		1370763 3/4	1370764 5/6	1370765 7/8	1370766 9/10	1370767 11/12
1	Frame Assembly	1389384	1389385	1389386	1389387	1389388
2	Reel Foot	1389649	1389650	1389651	1389652	1389653
3	Reel Foot Screw (2 req)	1329026				
4	Clutch Assembly	1389654		1389655		
5	External Key Washer	1389656		1389657		
6	Push Head	1389658				
7	Spool Click Spring (2 req)	1329244				
8	Spool Click Pin (2 req)	1329245				
9	Disk Plate	1389659		1389660		
10	Axle	1389661		1389662		
11	Shaft O-Ring	1389663	1389664	1389665	1389666	1389667
12	Drag Click Spring	1329256				

ITEM	DESCRIPTION	PART NO.				
		1370763 3/4	1370764 5/6	1370765 7/8	1370766 9/10	1370767 11/12
13	Push Head Cover	1389668				
14	Push Head Cover Screw (2 req)	1389669				
15	Spool Assembly	1389675	1389676	1389677	1389678	1389679
16	Handle Screw	1329236				
17	Handle Cup	1389670				
18	Handle Knob	1389671		1389672		
19	Handle Rivet	1389673		1389674		
20	Counter Balance Screw (2 req)	1329241				
21	Counter Balance (2 req)	1329015		1329030		
22	Complete Spool Assembly	1389680	1389681	1389682	1389683	1389684



*Patriarch*<sup>™</sup>



With care and periodic cleaning, your reel will serve you with years of excellent performance.

#### Warranty

This reel has a one-year warranty. For complete warranty information, visit our website at [www.pfluegerfishing.com](http://www.pfluegerfishing.com)

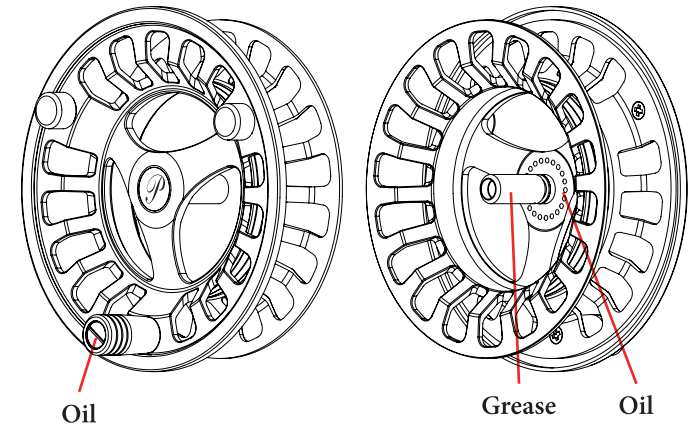
Pure Fishing, Inc • Columbia, SC  
Pure Fishing, Inc a subsidiary of Jarden Corporation  
(NYSE: JAH)

PFL-252-PAT-ver1

#### Care & Maintenance

The same method of cleaning is valid for all reels in the Monarch series.

1. Remove line and backing.
2. Remove the spool.
3. Flush away dirt by placing the spool and frame under a stream of warm water.
4. Dry carefully with a lint free cloth.
5. Lubricate with a good quality oil at the points illustrated on the diagrams.
6. Always ensure the spindle is adequately greased.
7. Always turn the disc-drag to the minimum setting to avoid compression of the system.
8. Always ensure the reel and line are dry before storing in the case or pouch.



# ReelSchematic

#### To convert your reel to right hand wind

1. Remove the spool out of the frame by rotating spool so that spool release button is visible. Using your index finger, depress button and pull spool off axle.
2. Pick up frame so that the axle assembly is visible.
3. Using your thumb and index finger, remove complete axle assembly by gripping the knurling at the base and turning counter-clockwise.
4. Once axle assembly is removed, the external key washer and clutch assembly will be exposed. Remove both the external key washer and clutch assembly by turning the frame 180 degrees so it is upside down and gently tap the frame on your hand or table.
5. Rotate the clutch assembly 180 degrees and replace into frame. Replace external key washer making sure the stainless steel side is facing out.
6. Replace the complete axle assembly and tighten. Replace spool assembly - your reel should now be right hand wind.