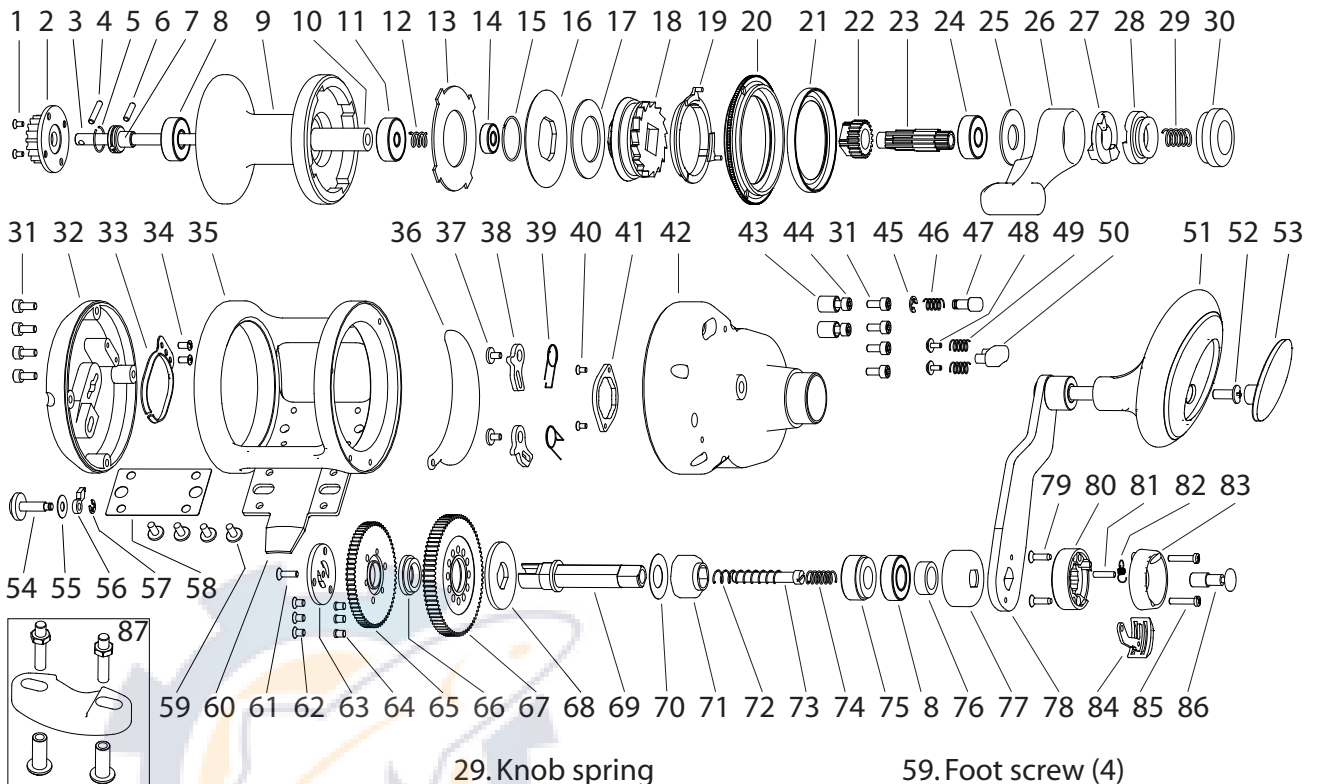




qualia

ADVANZ® series

Q12-IIHS/Q16-IIHS Parts



- 1. Click gear screw (2)
- 2. Clicker gear
- 3. Mainshaft
- 4. Mainshaft pin
- 5. Flange shim
- 6. Flange pin
- 7. Bearing flange
- 8. Bearing (7x19x6)
- 9. Spool
- 10. Mainshaft bushing
- 11. Bearing (5x13x4)
- 12. Drag coil spring
- 13. Friction washer
- 14. Bearing (5x11x4)
- 15. Hub retainer
- 16. Pressure plate
- 17. Spring washer
- 18. Drag hub
- 19. Silent A/R spring
- 20. Drag cover
- 21. Drag seal
- 22. Slow speed pinion
- 23. High speed pinion
- 24. Bearing (8x19x6)
- 25. Lever shim
- 26. Drag lever
- 27. Cam lifter
- 28. Drag cam

- 29. Knob spring
- 30. Drag knob
- 31. Sideplate screw (8)
- 32. Left sideplate
- 33. Clicker spring
- 34. Spring screw (2)
- 35. Mainframe
- 36. Transmission cover
- 37. A/R pawl screw (2)
- 38. A/R pawl (2)
- 39. A/R pawl spring (2)
- 40. Retainer screw (2)
- 41. Retainer plate
- 42. Right sideplate
- 43. Stopper body (2)
- 44. Stopper screw (2)
- 45. Button C-clip
- 46. Button spring
- 47. Spring button
- 48. Spring bar screw (2)
- 49. Bar spring (2)
- 50. Spring bar
- 51. Grip assembly
- 52. Grip pin screw
- 53. Grip cover
- 54. Clicker switch
- 55. Switch shim
- 56. Clicker pawl
- 57. Pawl retainer clip
- 58. Foot insulator

- 59. Foot screw (4)
- 60. Foot
- 61. Shift core screw
- 62. Shift plate screw (3)
- 63. Shift plate
- 64. Gear pin (3)
- 65. Low speed main gear
- 66. Gear nut
- 67. High speed main gear
- 68. Main gear shim
- 69. Drive shaft
- 70. Bearing shim
- 71. Clutch bearing
- 72. Bottom shift spring
- 73. Shift core
- 74. Upper shift spring
- 75. Lower bushing
- 76. Upper bushing
- 77. Boss cover
- 78. Handle assembly
- 79. Housing bottom screw (2)
- 80. Shift housing bottom
- 81. Pivot pin
- 82. Release button spring
- 83. Shift housing top
- 84. Release switch
- 85. Housing top screw (2)
- 86. Shift button
- 87. Rod clamp pit