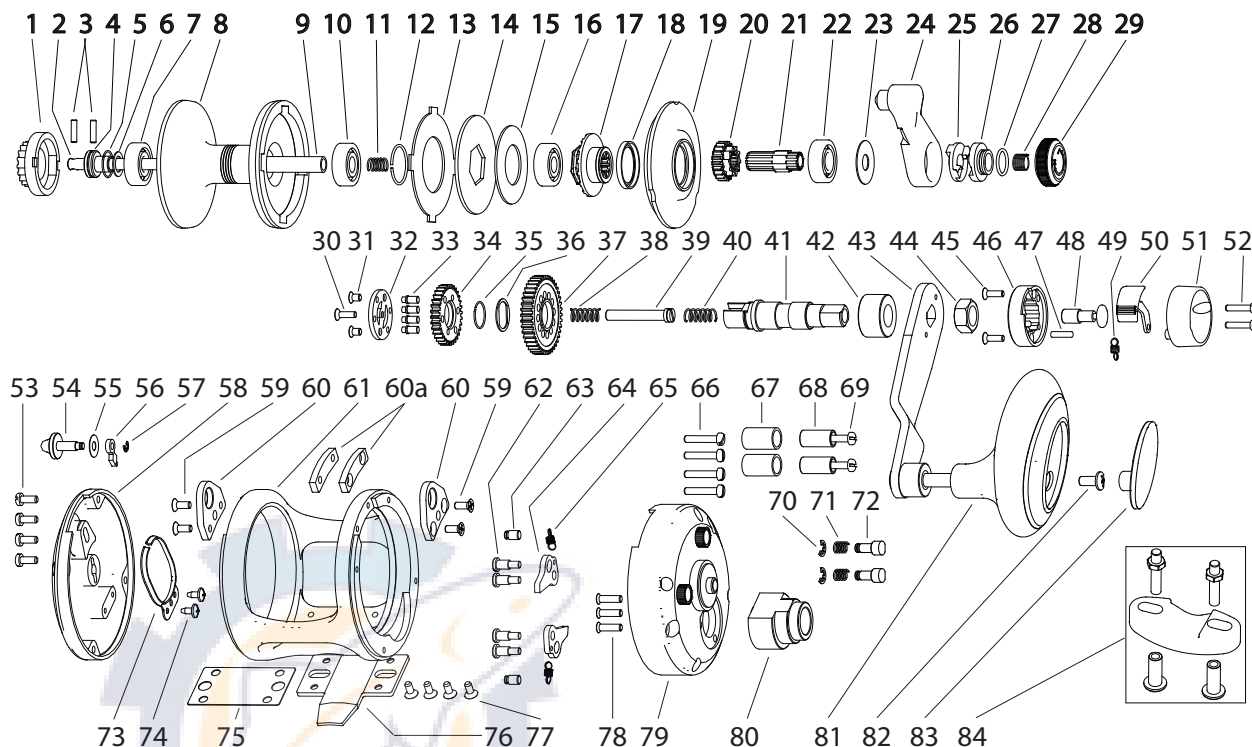




qualia

ADVANZ® series
Q12-II/Q16-II Parts



- | | | |
|----------------------------|------------------------------|------------------------------|
| 1. Clicker gear | 29. Drag knob | 57. Pawl retainer clip |
| 2. Mainshaft | 30. Shift core screw | 58. Left sideplate |
| 3. Mainshaft pin (2) | 31. Shift plate screw (3) | 59. Harness lug screw (4) |
| 4. Shaft stopper | 32. Shift plate | 60. Harness lug (2) |
| 5. Pin retainer | 33. Gear pin (3) | 60a. Lug hole plug (2) |
| 6. Bearing shim | 34. Low speed main gear | 61. Mainframe |
| 7. Bearing (5x11x14) | 35. Gear retainer ring | 62. A/R pawl screw (4) |
| 8. Spool | 36. Keyed washer | 63. A/R spring post (2) |
| 9. Mainshaft bushing | 37. High speed main gear | 64. A/R pawl (2) |
| 10. Bearing (5x13x4) | 38. Bottom shift spring | 65. A/R pawl spring |
| 11. Drag coil spring | 39. Shift core | 66. Right SP screw (4) |
| 12. Hub retainer | 40. Upper shift spring | 67. Stop cushion (2) |
| 13. Friction washer | 41. Drive shaft | 68. Stop Bushing (2) |
| 14. Pressure plate | 42. Handle arm bushing | 69. Stop Screw (2) |
| 15. Spring washer | 43. Handle arm assembly | 70. Button retainer clip (2) |
| 16. Hub bearing (5x11x4) | 44. Handle nut | 71. Button spring (2) |
| 17. Drag hub | 45. Housing bottom screw (2) | 72. Spring button (2) |
| 18. Drag seal | 46. Shift housing bottom | 73. Clicker spring |
| 19. Spool cover | 47. Pivot pin | 74. Click spring screw (2) |
| 20. Low speed pinion | 48. Shift push button | 75. Foot insulator |
| 21. High speed pinion | 49. Release button spring | 76. Foot |
| 22. Rt SP bearing (8x19x6) | 50. Release button | 77. Foot screw (4) |
| 23. Lever shim | 51. Shift housing top | 78. Handle boss screw (3) |
| 24. Drag lever | 52. Housing top screw (2) | 79. Right sideplate |
| 25. Cam lifter | 53. Left SP screw (4) | 80. Handle boss |
| 26. Drag cam | 54. Clicker switch | 81. Grip assembly |
| 27. Cam seal | 55. Switch shim | 82. Grip retainer screw |
| 28. Knob spring | 56. Clicker pawl | 82. Grip cover |
| | | 84. Rod clamp kit |