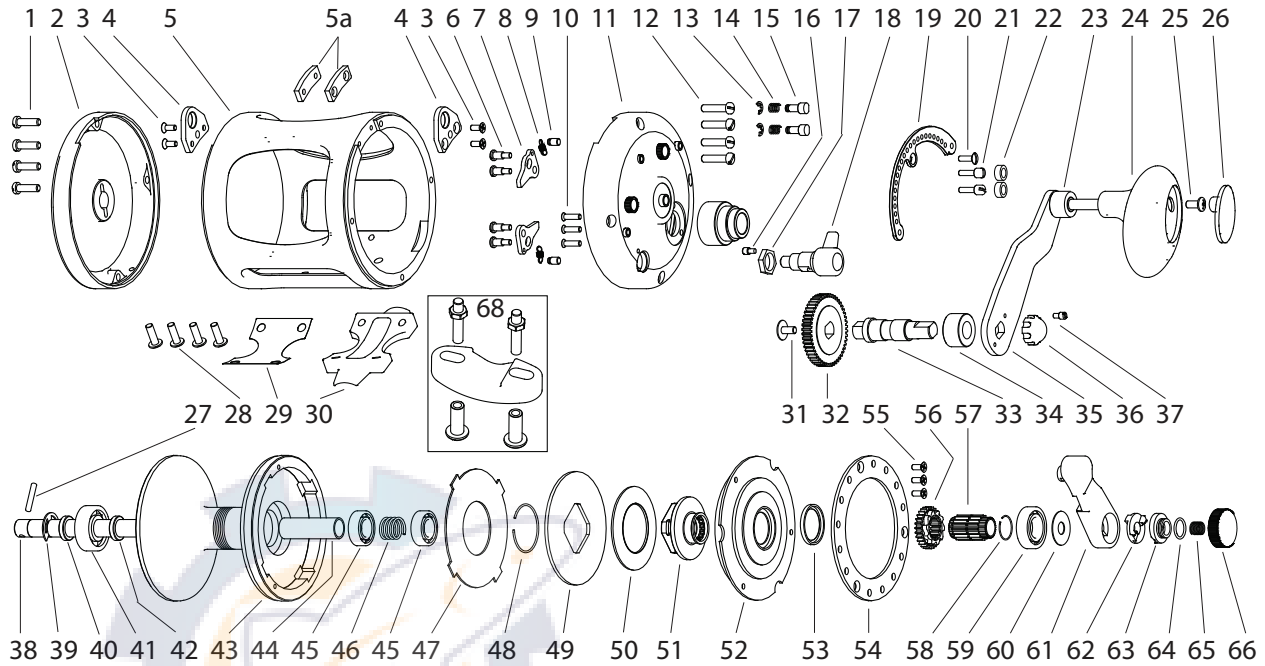




**ADVANZ® series**  
**Q30 Parts**



- |                              |                           |                              |
|------------------------------|---------------------------|------------------------------|
| 1. Left SP screw (4)         | 24. Grip assembly         | 48. Hub retainer             |
| 2. Left sideplate            | 25. Grip retainer screw   | 49. Pressure plate           |
| 3. Lug screw (4)             | 26. Grip cover plate      | 50. Spring washer            |
| 4. Harness lug (2)           | 27. Mainshaft pin         | 51. Drag hub                 |
| 5. Mainframe                 | 28. Foot screw (4)        | 52. Spool cover              |
| 5a. Lug hole plug (2)        | 29. Foot insulator        | 53. Drag seal                |
| 6. A/R pawl screw (4)        | 30. Foot                  | 54. Cover retainer plate     |
| 7. A/R pawl (2)              | 31. Gear retainer screw   | 55. Retainer plate screw (3) |
| 8. A/R pawl spring (2)       | 32. Main gear             | 56. A/R ratchet              |
| 9. A/R pawl spring pin       | 33. Drive shaft           | 57. Pinion gear              |
| 10. Handle boss scerw (3)    | 34. Handle arm bushing    | 58. Pinion retainer          |
| 11. Right sideplate          | 35. Handle arm assembly   | 59. Bearing (12x24x8)        |
| 12. Right SP screw (4)       | 36. Handle arm nut        | 60. Lever shim               |
| 13. Spring pin retainer (2)  | 37. Handle nut retainer   | 61. Drag lever               |
| 14. Pin spring (2)           | 38. Mainshaft             | 62. Cam lifter               |
| 15. Spring pin (2)           | 39. Bearing retainer clip | 63. Drag cam                 |
| 16. Click nut retainer screw | 40. Bearing bushing       | 64. Cam seal                 |
| 17. Clicker nut              | 41. Bearing (10x26x8)     | 65. Knob spring              |
| 18. Clicker body assembly    | 42. Bearing shim          | 66. Drag knob                |
| 19. Drag lever plate         | 43. Spool                 |                              |
| 20. Plate center screw       | 44. Mainshaft bushing     |                              |
| 21. Stop screw (2)           | 45. Bearing (10x20x8) (2) |                              |
| 22. Stop cushion (2)         | 46. Drag coil spring      |                              |
| 23. Handle arm assembly      | 47. Friction washer       |                              |