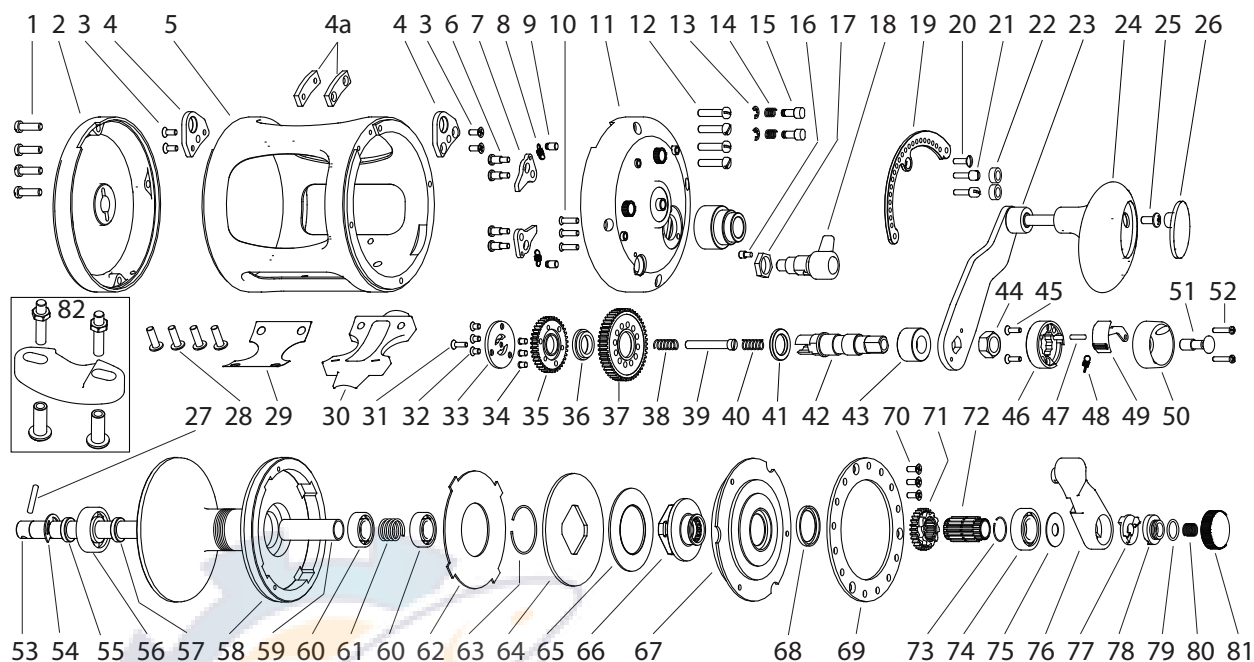




**ADVANZ® series**  
**Q30-II Parts**



- |                                |                               |                           |
|--------------------------------|-------------------------------|---------------------------|
| 1. Left SP screw (4)           | 29. Foot insulator            | 58. Spool                 |
| 2. Left sideplate              | 30. Foot                      | 59. Mainshaft bushing     |
| 3. Lug screw (4)               | 31. Shift core retainer screw | 60. Bearing (10x20x6) (2) |
| 4. Harness lug (2)             | 32. Shift plate screw (3)     | 61. Drag coil spring      |
| 4a. Lug hole plug (2)          | 33. Shift plate               | 62. Friction washer       |
| 5. Mainframe                   | 34. Gear pin (3)              | 63. Hub retainer          |
| 6. A/R pawl screw (4)          | 35. Slow speed main gear      | 64. Pressure plate        |
| 7. A/R pawl (2)                | 36. Gear retainer nut         | 65. Spring washer         |
| 8. A/R pawl spring (2)         | 37. High speed main gear      | 66. Drag hub              |
| 9. Pawl spring post (2)        | 38. Bottom shift spring       | 67. Spool cover           |
| 10. Handle boss screw (3)      | 39. Shift core                | 68. Drag seal             |
| 11. Right sideplate            | 40. Top shift spring          | 69. Cover retainer        |
| 12. Right SP screw (4)         | 41. Gear shim                 | 70. Retainer screw (3)    |
| 13. Spring button retainer (2) | 42. Drive shaft               | 71. Low speed pinion      |
| 14. Button spring (2)          | 43. Handle arm bushing        | 72. High speed pinion     |
| 15. Spring button              | 44. Handle arm assy.          | 73. Pinion retainer       |
| 16. Click nut retainer screw   | 45. Housing bottom screw (2)  | 74. Bearing (12x24x8)     |
| 17. Clicker nut                | 46. Shift housing bottom      | 75. Lever shim            |
| 18. Clicker assembly           | 47. Pivot pin                 | 76. Drag lever            |
| 19. Drag lever plate           | 48. Release switch spring     | 77. Cam lifter            |
| 20. Lever plate center screw   | 49. Release switch            | 78. Drag cam              |
| 21. Stop screw (2)             | 50. Shift housing top         | 79. Cam seal              |
| 22. Stop cushion               | 51. Push button               | 80. Knob spring           |
| 23. Handle arm assembly        | 52. Housing top screw         | 81. Drag knob             |
| 24. Grip assembly              | 53. Mainshaft                 | 82. Rod clamp kit         |
| 25. Grip retainer screw        | 54. Bearing retainer clip     |                           |
| 26. Grip cover plate           | 55. Bearing bushing           |                           |
| 27. Mainshaft pin              | 56. Bearing (10x26x8)         |                           |
| 28. Foot screw (4)             | 57. Bearing shim              |                           |