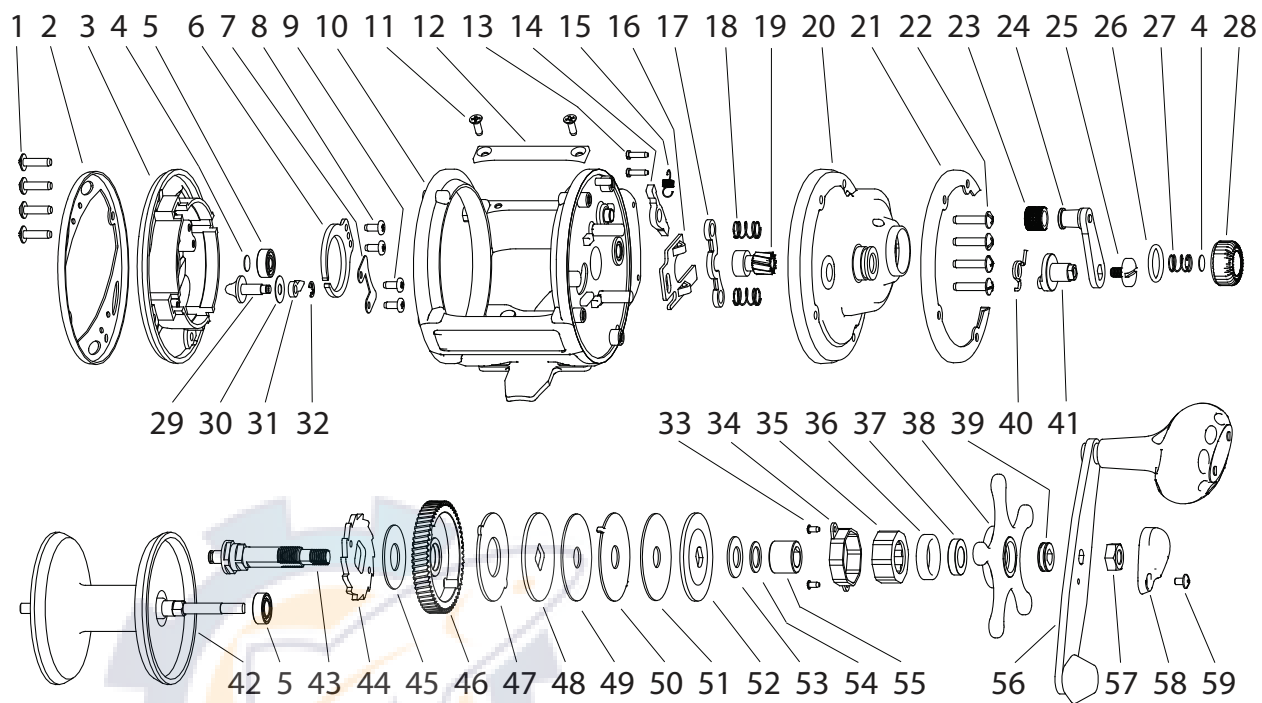




qualia

**Inshore reel series
TS10 and TS15 Parts**



- | | | |
|----------------------------------|-------------------------------|---------------------------|
| 1. Left sideplate screw (4) | 21. Right side edge plate | 41. Free spool switch cam |
| 2. Left side edge plate | 22. Right sideplate screw (4) | 42. Spool assembly |
| 3. Left sideplate | 23. A/R switch grip | 43. Drive shaft |
| 4. Bearing shim (2) | 24. A/R switch assembly | 44. Anti reverse ratchet |
| 5. Spool bearing (2) | 25. A/R switch screw | 45. A/R ratchet washer |
| 6. Click spring | 26. Cap seal | 46. Main gear |
| 7. Clicker tip retainer | 27. Cap spring | 47. Eared friction washer |
| 8. Click spring screw (2) | 28. End play adjustment cap | 48. Keyed drag washer |
| 9. Retainer screw (2) | 29. Click switch | 49. Teflon drag washer |
| 10. Mainframe | 30. Click switch shim | 50. Bent-ear drag washer |
| 11. Frame plate screw (2) | 31. Clicker pawl | 51. Carbon drag washer |
| 12. Frame protector plate | 32. Click switch circlip | 52. Top keyed washer |
| 13. Transmission cover screw (2) | 33. Retainer cover screw (2) | 53. Drag spring washer |
| 14. A/R pawl | 34. Clutch bearing retainer | 54. Spacer washer |
| 15. Pawl spring | 35. Clutch bearing | 55. Clutch bearing sleeve |
| 16. Free-spool cam | 36. Nylon bushing | 56. Handle assembly |
| 17. Yoke | 37. Brass bushing | 57. Handle nut |
| 18. Yoke spring (2) | 38. Drag star | 58. Handle nut retainer |
| 19. Pinion gear | 39. Drag star seal assembly | 59. Nut retainer screw |
| 20. Right sideplate | 40. Free spool switch spring | |