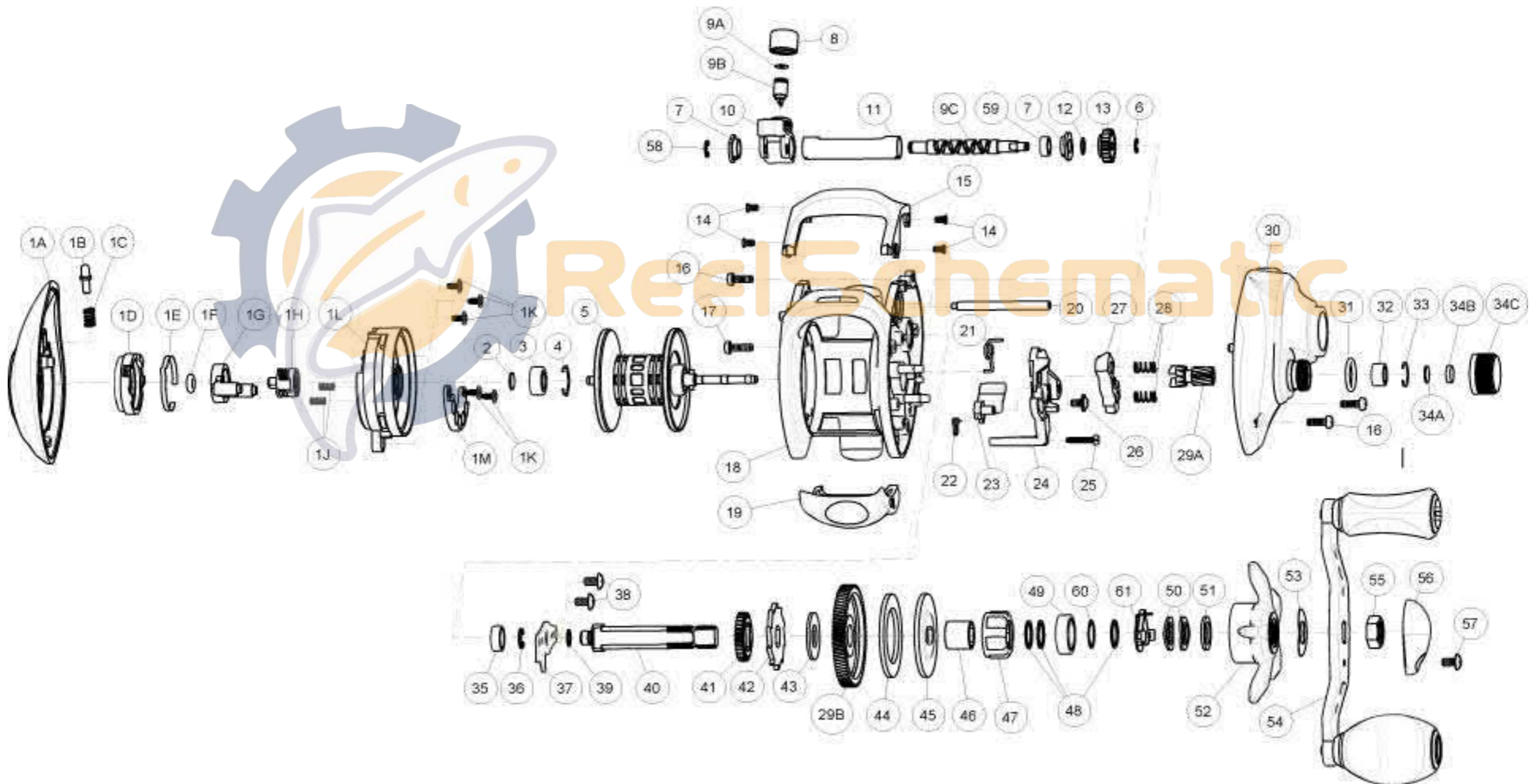


# QUANTUM<sup>®</sup>

## Helicat

### HCBC100



# QUANTUM<sup>®</sup>

## Hellicat

### HCBC100

#### Quantum HCBC100 Baitcast Reel Part List

Key #	Description	Part No.	Qty.	Key #	Description	Part No.	Qty.
1	Palm Side Cover Kit	JB4023-04	1	27	Pinion Yolk	NW025-01	1
1A	Palm Side Cover Assembly	JB323-04	1	28	Pinion Yolk Spring	KW040-01	2
1B	Palm Side Locking Lever	MW119-01	1				
1C	Locking Lever Spring	MW096-01	1	29A	Pinion Gear	LW011-01	1
1D	Casting Control Dial	MW026-02	1	29B	Drive Gear	UX012-01	1
1E	Control Dial Clicker Spring	MW108-01	1	30	Gear Side Cover Assembly	JB324-04	1
1F	Control Dial Friction Ring	NX105-01	1	31	Spool Tension Knob O-Ring	QW101-01	1
1G	Slide Cam "A"	EB028-01	1	32	Spool Tension Ball Bearing	SW117-01	1
1H	Slide Cam "B"	JB028-01	1	33	Spool Tension Knob Bearing Retain	EB080-01	1
1J	Magnet Plate Spring	EB071-01	2				
1K	Screw	EB125-01	5	34A	Spool Tension Knob Washer	QW032-04	1
1L	Spool Cover	JB042-01	1	34B	Spool Cushion Washer	MV082-01	1
1M	Magnet Plate Assembly	EB330-01	1	34C	Spool Tension Knob	HW033-03	1
2	Spool Shaft Washer (Palm Side)	QW032-04	1	35	Crank Shaft Bearing (Frame Side)	SW017-01	1
3	Spool Shaft Ball Bearing (Palm Side)	QV017-01	1	36	Crank Shaft E-Clip	QW120-01	1
4	Bearing Retainer Ring	HV080-01	1	37	Crank Shaft Retainer Plate	KW002-01	1
5	Spool Assembly	JB321-04	1	38	Crank Shaft Retainer Plate Screw	QW123-01	2
6	Worm Shaft E-Clip	NX090-01	1	39	Adjustment Washer	EB032-01	1
7	Worm Shaft Bushing	PA067-01	2	40	Crank Shaft	JB008-01	1
8	Line Guide Pawl Screw	KW007-01	1	41	Worm Shaft Drive Gear	ZW112-01	1
			1	42	Trip Ratchet	KW083-01	1
9A	Line Guide Pawl Washer	BV035-01	1	43	Trip Ratchet Washer	KW111-01	1
9B	Line Guide Pawl	ZW006-01	1	44	Drag Washer	UX059-01	1
9C	Worm Shaft	JB072-01	1	45	Drag Key Washer	KW045-01	1
10	Line Guide Carrier Assembly	EB347-01	1	46	One Way Clutch Sleeve	KW052-01	1
11	Worm Shaft Guide	KW016-01	1	47	One Way Clutch	EX063-01	1
12	Worm Shaft Washer (Gear Side)	PA035-01	1	48	Bearing Washer	TW035-02	3
13	Worm Shaft Pinion Gear	HV085-01	1	49	Crank Shaft Bearing (Handel Side)	TW058-02	1
14	Front Support Screw	KW107-01	4	50	Star Drag Spring Washer	JX046-01	2
15	Front Support	JB099-04	1	51	Star Drag Washer	ZW032-01	1
16	Gear Side Cover Screw "A"	KW123-01	3	52	Star Drag	NW055-03	1
17	Gear Side Cover Screw "B"	KW123-02	1	53	Handle Spring Washer	QW054-01	1
18	Frame Assembly	JB301-04	1	54	Handle Assembly	HB318-01	1
19	Thumb Bar Assembly	KW309-02	1	55	Handle Nut	QW003-05	1
20	Pillar	KW061-01	1	56	Handel Nut Reatiner	KV034-04	1
21	Release Slider Spring	KW104-01	1	57	Handel Nut Reatiner Screw	LW057-01	1
22	Kick Lever Spring	JB097-01	1	58	Worm Shaft E-Clip (Palm)	NX092-01A	1
23	Kick Lever	JB077-01	1	59	Worm Shaft Ball Bearing	EH158-01	1
24	Release Slider	NW039-01	1	60	Star Drag Adjust Washer	TW035-01	1
25	Thumb Bar Screw	ZW053-01	1	61	Star Drag Click Spring Assembly	YX4114-01	1
26	Release Slider Screw	EB125-01	1				