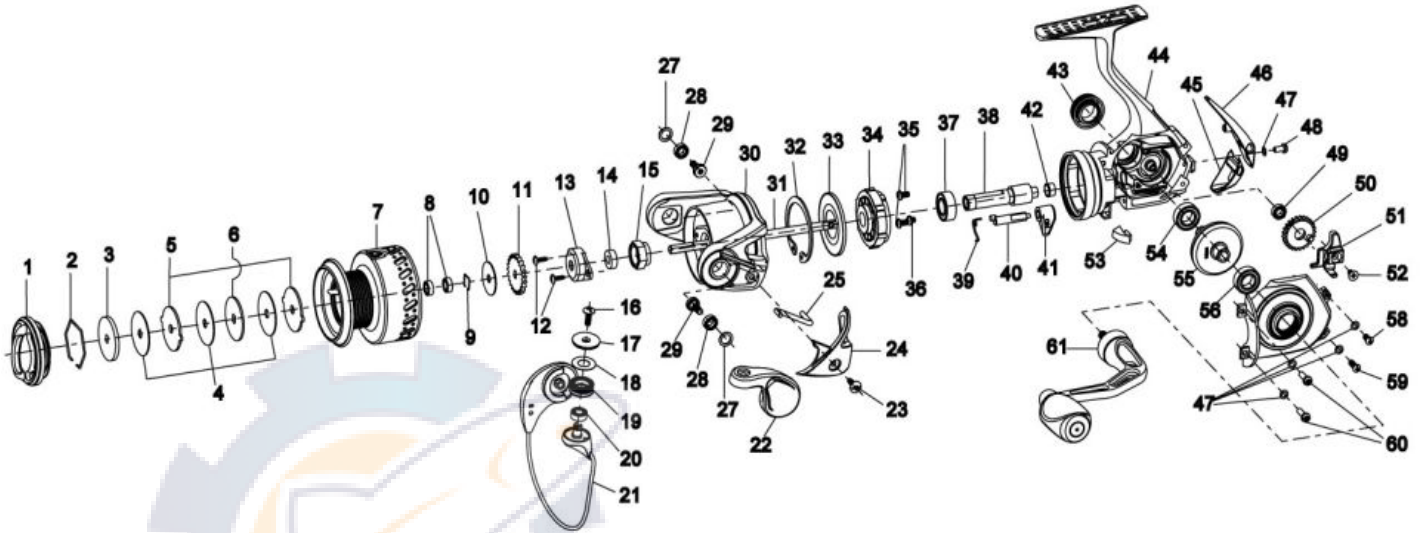


**QUANTUM**  
Code  
**CD40F**



Quantum Code CD40F Spinning Reel Part List

Key #	Description	Part No.	Key #	Description	Part No.
1	Drag Knob Assembly	TK332-04	32	Clutch Retaining Ring	TK060-01
2	Retainer Ring	RQ038-01	33	Clutch Seal Plate	TK166-01
3	Drag Washer "D"	SQ080-01	34	Clutch Unit	CG463-01
4	Drag Washer "B"	RQ033-01	35	Pinion Bearing Screw "A"	TK057-01
5	Drag Washer "A"	RQ081-01	36	Pinion Bearing Screw "B"	TK057-11
6	Drag Washer "C"	RQ080-01	37	Pinion Ball Bearing	UK028-01
7	Spool Assembly	TK321-02	38	Pinion	SQ011-01
8	Spool Ball Bearing	EH158-01	39	Stopper Cam Spring	TK089-01
9	Bearing Retainer Ring	BG080-01	40	Stopper Cam	TK090-01
10	Spool Adjust Washer	PT030-01	41	Stopper Lever	RQ059-01
11	Click Gear	RQ037-01	42	Pinion Bushing	SQ141-03
12	Rotor Nut Lock Screw	RK094-01	43	Handle Screw Assembly	TK354-02
13	Rotor Nut Cover	TK214-01	44	Part Not Available	N/A
14	Main Shaft Bushing	TK213-01	45	Body Rear Cover "Bottom"	TK140-53
15	Rotor Nut	TK006-01	46	Body Rear Cover "Top"	TK140-01
16	Line Roller Screw	AQ108-01	47	Side Cover Screw Washer	RQ142-01
17	Line Roller Collar	BG104-01	48	Side Cover Screw "D"	RQ057-11
18	Line Roller Washer	DH102-01	49	O/S Gear Ball Bearing	EH158-01
19	Line Roller	CH004-01	50	O/S Gear	TQ053-01
20	Line Roller Ball Bearing	GH202-01	51	O/S Slider	TK025-01
21	Bail Assembly	CG347-02	52	Main Shaft Screw	RQ100-01
22	Arm Lever Assembly	CG307-02	53	Trip Ramp	TK119-01
23	A/L Cover Screw	GU077-01	54	Body Ball Bearing	BL157-01
24	Armler Cover	TK087-05	55	Drive Gear Assembly	SQ012-01
25	Kick Lever	TK019-01	56	Side Cover Ball Bearing	BL157-01
26	Bail Pivot Insert	N/A	57	Side Cover Assembly	TK323-04
27	Bail Pivot Bushing	TK110-01	58	Side Cover Screw "C"	SK057-11
28	Bail Pivot Ball Bearing	GH202-01	59	Side Cover Screw "B"	SK057-01
29	Bail Pivot Screw	TK111-01	60	Side Cover Screw "A"	RQ057-04
30	Part Not Available	N/A	61	Handle Assembly	TK318-01
31	Main Shaft	TQ015-02			

