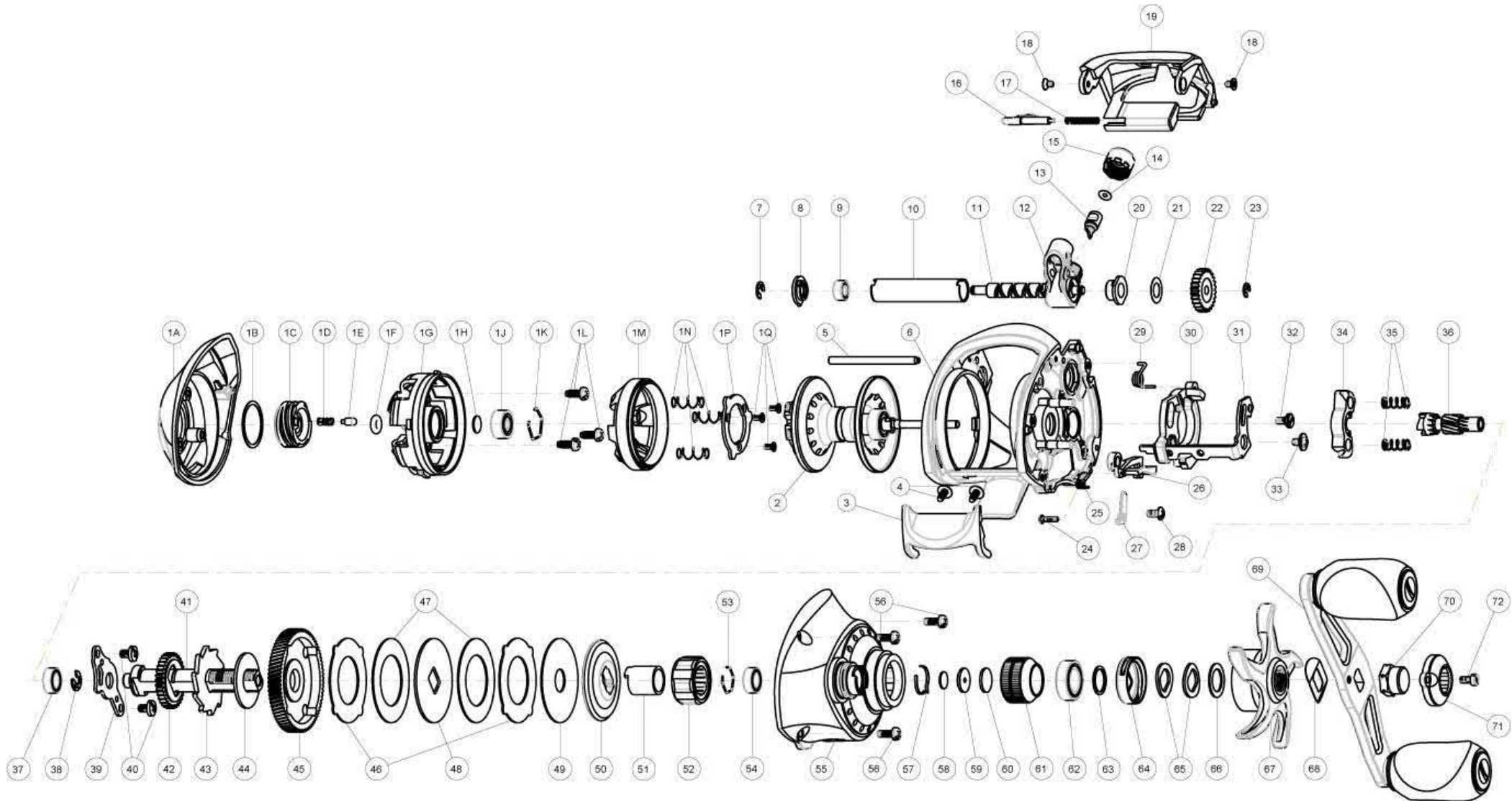


QUANTUM

IC100HPT



Quantum ICON - IC100HPT Part List

Key No.	Description	Part No. IC100HPT	Qty	Key No.	Description	Part No. IC100HPT	Qty
1	Palm Side Cover Kit include	VA4023-01	1	30	Release Slider	VA039-01	1
	1A - Palm Side Cover	VA023-01	1	31	Release Slider Link	LX036-01	1
	1B - Centrifugal Dial Washer	SB111-01	1	32	Screw	EW125-02	1
	1C - Centrifugal Dial	SB026-01	1	33	Screw	CX076-03	1
	1D - Centrifugal Dial Click Spring	YW114-01	1	34	Pinion Yoke	SB025-01	1
	1E - Centrifugal Dial Click Pawl	PW098-01	1	35	Yoke Spring	GX040-01	2
	1F - Centrifugal Dial Friction Ring	SB105-01	1	36	Pinion	WA011-01	1
	1G - Spool Cover	VA051-01	1	37	Crank Shaft Ball Bearing - Bottom	SW017-01	1
	1H - Spool Tension Shim	QW032-04	1	38	E-Clip	QW120-01	1
	1J - Spool Shaft Ball Bearing - Palm	QV017-01	1	39	Crank Shaft Retainer	VA002-01	1
	1K - Clip Ring	HV080-01	1	40	Crank Shaft Retainer Screw	JX127-02	2
	1L - Spool Cover Screw	WW107-01	3	41	Crank Shaft	YW008-05	1
	1M - Break Ring Assembly	VA342-01	1	42	O/S Drive Gear	DW112-01	1
	1N - Break Ring Spring	DW070-01	3	43	Trip Ratchet	PW083-02	1
	1P - Break Ring Retainer	DW129-01	1	44	Trip Ratchet Washer	YW111-01	1
	1Q - Break Ring Retainer Screw	DW107-01	3	45	Drive Gear	WA012-01	1
2	Spool Assembly	VA321-01	1	46	Drag Key Washer	PW048-01	2
3	Thumb Bar	LX009-01	1	47	Drag Disc "A"	PW059-02	2
4	Thumb Bar Screw	CW125-01	2	48	Drag "D" Washer	YW045-01	1
5	Stabilizer Bar	VA061-01	1	49	Drag Disc "B"	YW059-02	1
6	Frame	VA001-01	1	50	Disk Washer	VA045-01	1
7	E-Clip	NX092-01	1	51	One Way Clutch Sleeve	UX052-01	1
8	Bearing Retainer	DW067-01	1	52	One Way Clutch	VA063-01	1
9	Worm Shaft Ball Bearing	XX117-01	1	53	Spool Tension Knob Ball Bearing Retainer	EB080-01	1
10	Worm Shaft Guide	DW016-01	1	54	Tension Knob Ball Bearing	SW017-01	1
11	Worm Shaft	HV072-01	1	55	Gear Side Cover Assembly	VA324-01	1
12	Line Guide Carrier	VA047-01	1	56	Gear Side Cover Screw "A"	BV123-03	3
13	Line Guide Pawl	CX006-01	1	57	Spool Tension Knob Click Spring	PW114-01	1
14	Line Guide Pawl Washer	BV035-01	1	58	Spool Tension Washer	QW032-04	1
15	Line Guide Carrier Screw	ZW007-01	1	59	Spool Tension Collar	VA081-01	1
16	Side Cover Locking Lever	VA119-01	1	60	Spool Cushion Washer	VA082-01	1
17	Locking Lever Spring	ZW096-01	1	61	Spool Tension Knob	VA033-01	1
18	Front Support Screw	CF107-01	2	62	Crank Shaft Ball Bearing - Top	TW058-03	1
19	Front Support	VA099-01	1	63	Crank Shaft Ball Bearing Washer	TW035-02	1
20	Worm Shaft Bushing	PW068-01	1	64	Drag Click Spring Assembly	YX4114-01	1
21	O/S Pinion Gear Washer	EX035-01	1	65	Spring "D" Washer	JX046-01	2
22	O/S Pinion Gear	DW085-01	1	66	Star Drag Washer	ZW032-01	1
23	E-Clip	NX090-01	1	67	Star Drag	VA055-01	1
24	Gear Side Cover Screw "B"	VA057-01	1	68	Handle Washer	NX054-01	1
25	Kick Lever Spring	VA097-01	1	69	Handle Assembly	VA318-02	1
26	Kick Lever	PW077-01	1	70	Handle Nut	DW003-07	1
27	Kick Lever Retainer	VA161-01	1	71	Handle Nut Cap	DW034-02	1
28	Screw	VA123-01	1	72	Handle Nut Cap Screw	DW050-02	1
29	Release Slider Spring	VA104-01	1				