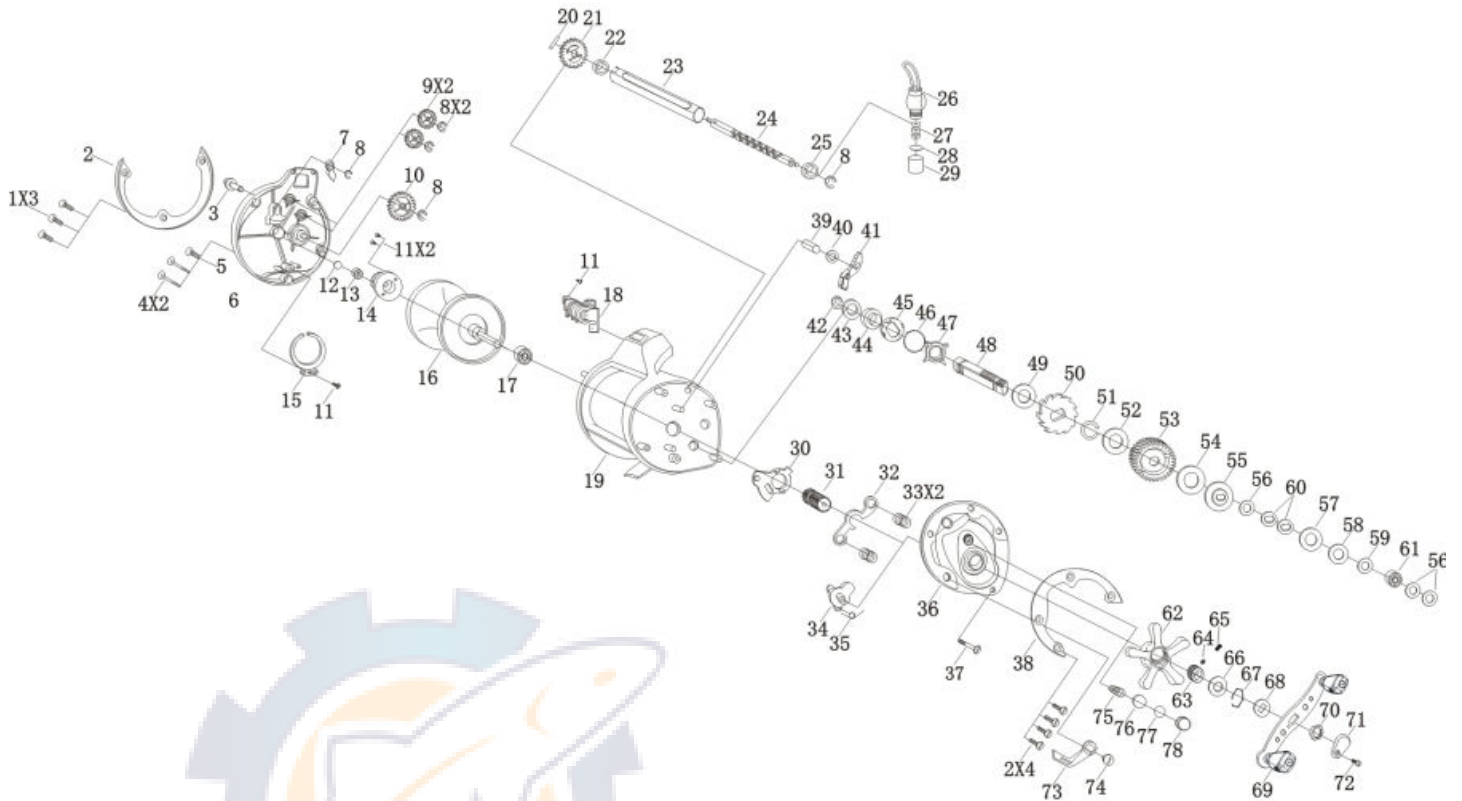


Indicator ID20LC



Quantum Line Counter ID20LC Trolling Reel Part List

| Key # | Description | Part No. | | Key # | Description | Part No. | |
|-------|------------------------------|----------|--|-------|-----------------------------|----------|--|
| | | ID20LC | | | | ID20LC | |
| 1 | Side Cover Screw - A | RI123-01 | | 40 | Anti Reverse Pawl Washer | RI081-01 | |
| 2 | Palm Side Cover Metal Ring | RI113-01 | | 41 | Anti reverse Pawl Assembly | RI363-01 | |
| 3 | Bait Click Lever | EI109-01 | | 42 | E-Clip | QW120-01 | |
| 4 | Side Cover Screw - C | RI050-01 | | 43 | Washer | FI035-01 | |
| 5 | Side Cover Screw - D | RI076-01 | | 44 | Crank Shaft Bushing | EI117-01 | |
| 6 | Palm Side Cover | RI024-01 | | 45 | Trip Ratchet | EI038-01 | |
| 7 | Bait Click Pawl | EI114-01 | | 46 | Trip Ratchet Spring | EI097-01 | |
| 8 | E-Clip | NE092-01 | | 47 | Trip Ratchet Spring Holder | EI103-01 | |
| 9 | Idle Gear | RI127-01 | | 48 | Crank Shaft | RI008-01 | |
| 10 | Oscillate Pinion Gear | RI152-01 | | 49 | Anti Reverse Washer | RI111-01 | |
| 11 | Screw | WW107-01 | | 50 | Anti Reverse Ratchet - A | FI083-01 | |
| 12 | Spool Shaft Washer | EI035-01 | | 51 | C-Clip | RI075-01 | |
| 13 | Bushing | EI017-01 | | 52 | Anti Reverse Ratchet Washer | RI059-01 | |
| 14 | Oscillate Drive Gear | RI112-01 | | 53 | Drive Gear | RI012-01 | |
| 15 | Spring Clip | EI110-01 | | 54 | Drive Disc -A | RI048-01 | |
| 16 | Spool Assembly | RI321-01 | | 55 | Drag "D" Washer - A | RI045-01 | |
| 17 | Ball Bearing | GI017-01 | | 56 | Drag Key Washer | RI060-01 | |
| 18 | Line Counter | RI155-01 | | 57 | Drag Disc "B" | RI038-01 | |
| 19 | Frame Assembly | RI301-01 | | 58 | Drag "D" Washer - B | RI035-01 | |
| 20 | Pin | RI093-01 | | 59 | Washer | RI126-01 | |
| 21 | Oscillate Pinion Gear | RI085-01 | | 60 | Spring "D" Washer | EI046-01 | |
| 22 | Worm Shaft Bushing A | RI067-01 | | 61 | Ball Bearing | RI058-01 | |
| 23 | Worm Shaft Guide | RI016-01 | | 62 | Star Drag | RI055-01 | |
| 24 | Worm Shaft | RI072-01 | | 63 | Click Ratchet | RI108-01 | |
| 25 | Wrom Shaft Bushing B | RI068-01 | | 64 | Click Pawl | RI103-01 | |
| 26 | Line Guide Carrier Asembly | RI347-01 | | 65 | Click Spring | RI141-01 | |
| 27 | Line Guide Pawl | EI006-01 | | 66 | Washer | RI121-01 | |
| 28 | Line Guide Pawl Washer | BV035-01 | | 67 | Clip Ring | RI022-01 | |
| 29 | Line Guide Pawl Washer Screw | EI007-01 | | 68 | Washer | RI046-01 | |
| 30 | Release Slider | EI093-01 | | 69 | Handle Asembly | RI318-01 | |
| 31 | Pinion Gear | RI011-01 | | 70 | Handle Nut | EI033-01 | |
| 32 | Pinion Yoke | EI025-01 | | 71 | Handle Nut Cap | RI145-01 | |
| 33 | Pinion Yoke Spring | EI040-01 | | 72 | Handle Screw | HI033-01 | |
| 34 | Release Slider Cam | EI141-01 | | 73 | Release Lever | LI114-01 | |
| 35 | Release Slider Cam Spring | EI104-01 | | 74 | Release Lever Screw | EI053-01 | |
| 36 | Gear Side Cover Asembly | RI324-01 | | 75 | Tension Knob Spring | RI105-01 | |
| 37 | Side Cover Screw - B | RI094-01 | | 76 | Spool Cushion Washer | EI082-01 | |
| 38 | Gear Side Cover Metal Ring | RI159-01 | | 77 | Spool Tension Washer | EI032-01 | |
| 39 | Anti Reverse Pawl Post | RI100-01 | | 78 | Spool Tension Knob | GI033-01 | |