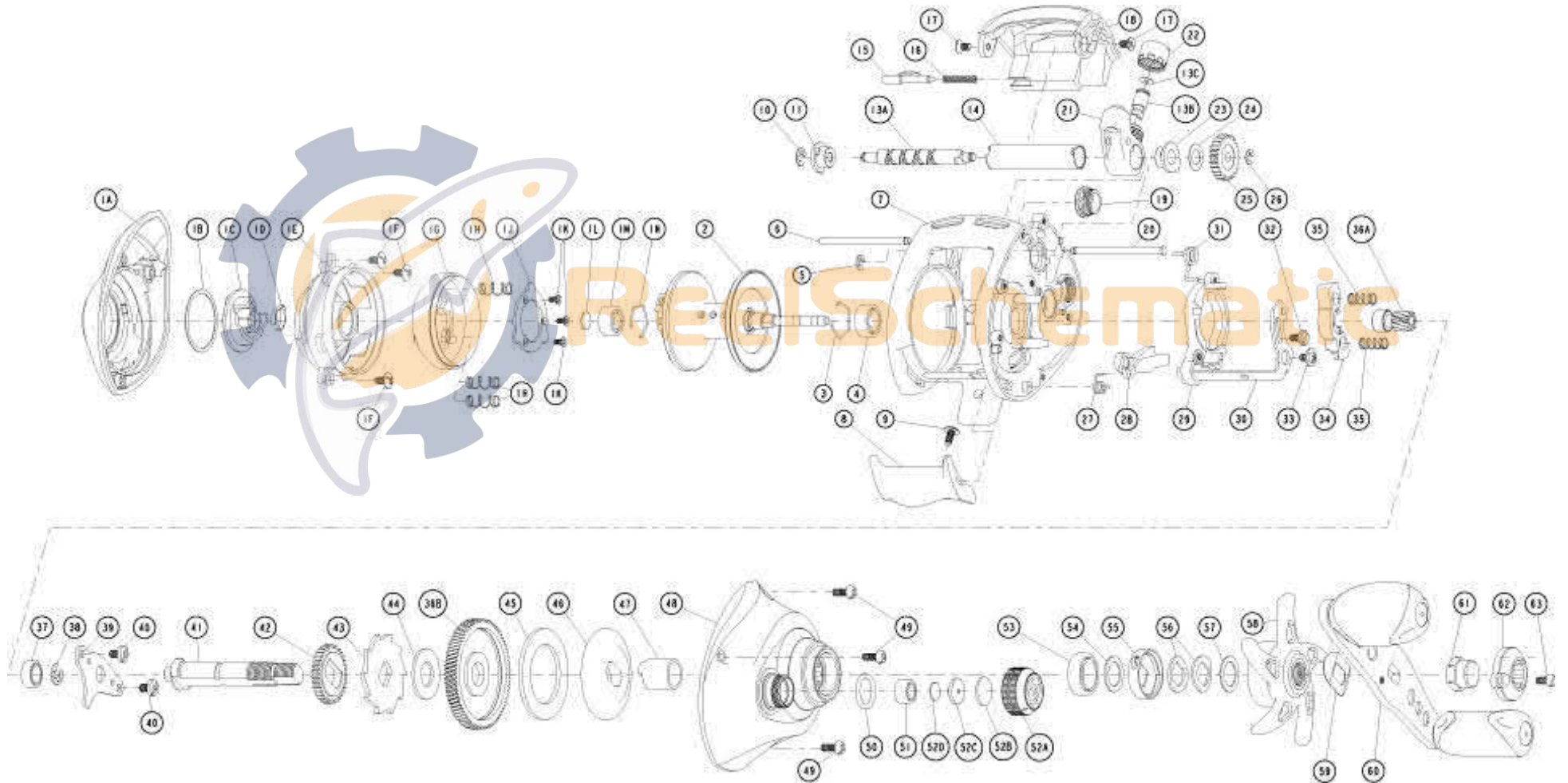


QUANTUM

KT100SPTA





KT100SPTA

Quantum KT100SPTA Bait Cast Reel Part List

Key #	Description	Qty	Part No.	Key #	Description	Qty	Part No.
1	Palm Side Cover Kit include	1	DW4023-06	28	Kick Lever	1	DW077-01
	1A - Palm Side Cover Assembly	1	N/A	29	Release Slider	1	DW039-01
	1B - Centrifugal Dial Washer	1	DW111-01	30	Release Slider Link	1	DW036-01
	1C - Centrifugal Dial Assembly	1	DW326-07	31	Release Slider Spring	1	DW104-01
	1D - Centrifugal Dial Spring	1	CX108-01	32	Release Slider Link Screw	1	EW125-01
	1E - Spool Cover	1	DW051-01	33	Release Slider Screw	1	CX076-03
	1F - Spool Cover Screw	3	DW125-01	34	Pinion Yoke	1	EW025-01
	1G - Brake Ring Assembly	1	DW342-01	35	Yoke Spring	2	GX040-01
	1H - Brake Ring Slider Spring	3	DW070-01	36	Gear Kit Include	1	EW4011-01
	1J - Brake Ring Slider Spring Retainer	1	DW129-01		36A - Pinion Gear Assembly	1	EW311-01
	1K - Brake Ring Spring Retainer Screw	3	DW107-01		36B - Drive Gear	1	UX012-01
	1L - Spool Tension Shim	1	QW032-04	37	Crank Shaft Ball Bearing - L	1	SW017-01
	1M - Spool Shaft Ball Bearing - Palm	1	QV017-01	38	E-Clip	1	QW120-01
	1N - Clip Ring	1	HV080-01	39	Crank Shaft Retainer	1	DW002-01
2	Spool Assembly	1	EW321-07	40	Crank Shaft Retainer Screw	2	JX107-02
3	Clip Ring	1	EX080-01	41	Crank Shaft	1	DW008-05
4	Spool Shaft Ball Bearing - Gear	1	EX017-02	42	O/S Drive Gear	1	DW112-01
5	E-Clip	1	NX090-01	43	Trip Ratchet	1	DW083-02
6	Stabilizer Bar - A	1	DW061-02	44	Trip Ratchet Washer	1	QW111-01
7	Frame	1	DW001-19	45	Drag Disc	1	UX059-01
8	Thumb Bar	1	DW009-02	46	Drag Washer	1	DW045-01
9	Thumb Bar Screw	1	CW125-01	47	One Way Clutch Sleeve	1	UX052-01
10	E-Clip	1	NX092-01	48	Gear Side Cover Assembly	1	DW324-22
11	Worm Shaft Bushing	1	AB067-01	49	Gear Side Cover Screw	3	BV123-03
13	Worm Shaft Kit include	1	HV4072-01	50	Tension Knob O-Ring	1	QW101-01
	13A - Worm Shaft	1	HV072-01	51	Tension Knob Ball Bearing	1	SW117-01
	13B - Line Guide Pawl	1	ZW006-01	52	Spool Tension Knob Kit Include	1	DW4033-07
	13C - Line Guide Carrier Washer	1	BV035-01		52A - Spool Tension Knob Assembly	1	DW333-07
14	Worm Shaft Guide	1	DW016-02		52B - Spool Cushion Washer	1	QW082-01
15	Side Cover Locking Lever	1	YX119-02		52C - Spool Tension Collar	1	QW081-01
16	Side Cover Locking Lever Spring	1	ZW096-01		52D - Spool Tension Washer	1	QW032-04
17	Hood Screw	2	HX107-02	53	Crank Shaft Ball Bearing	1	TW058-01
18	Hood	1	DW027-07	54	Crank Shaft Ball Bearing Washer	1	TW035-02
19	Oil Cap Screw	1	DW150-08	55	Drag Click Spring Assembly	1	YX4114-01
20	Stabilizer Bar - B	1	WP061-02	56	Drag "D" Washer	2	JX046-01
21	Line Guide Carrier	1	DW047-04	57	Star Drag Washer	1	ZW032-01
22	Line Guide Carrier Screw	1	ZW007-01	58	Star Drag	1	EW055-01
23	Worm Shaft Bushing - Gear Side	1	DW068-01	59	Handle Washer	1	NX054-01
24	O/S Pinion Gear Washer	1	EX035-01	60	Handle Assembly	1	DW318-20
25	O/S Pinion Gear	1	DW085-01	61	Handle Nut	1	DW003-05
26	E-Clip	1	NX090-01	62	Handle Nut Cap	1	DW034-02
27	Kick Lever Spring	1	GX097-01	63	Handle Nut Cap Screw	1	DW050-02