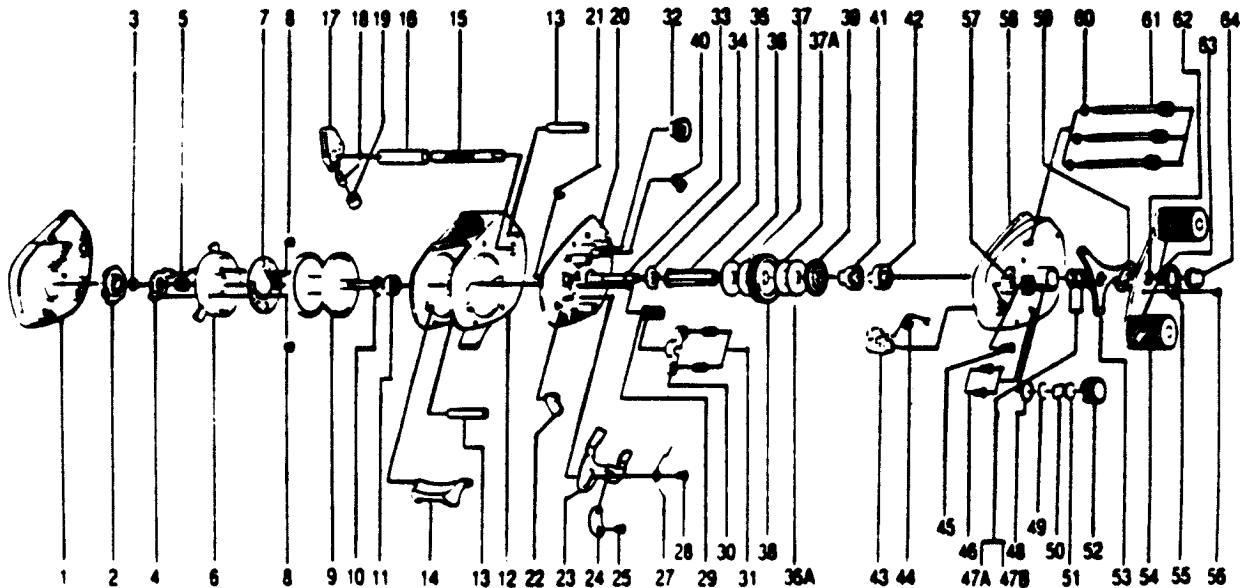


QUANTUM PREDATOR 2511



KEY PART NO. NO.	DESCRIPTION	PRICE	KEY PART NO. NO.	DESCRIPTION	PRICE
1	FW323 LEFT SIDE COVER ASSY.	6.44	35	GX4652 CRANK SHAFT	3.44
2	VX4303 MAGNET CONTROL DIAL	1.43	36	FW048 DRAG WASHER - UPPER	1.70
3	VX4250 DIAL FRICTION RING	.80	A36	GX4653 DRAG WASHER "D"	1.72
4	VX4261 SLIDE CAM	.85	37	GX4659 DRAG WASHER "B"	1.37
5	VX4301 SLIDE CAM SPRING	.75	A37	GX4659-1 DRAG W/S B (.8 T)	1.37
6	FW351 SPOOL COVER ASSY.	4.12	38	GX4651 DRIVE GEAR	3.55
7	VX4257 MAGNET PLATE ASSY	12.56	39	FW091 ANTI-REVERSE RATCHET	1.44
8	VX4602 MAGNET PLATE SCREW	1.68	40	YX4452 ANTI-REVERSE PAWL	3.53
9	FW321 SPOOL ASSY.	10.82	41	FW035 BUSHING - LOWER	5.67
10	YX4253 CLIP RING	.88	42	FW058 GEAR CLUTCH	5.67
11	YX4252 BALL BEARING	11.78	43	FW037 FLIPPIN' ARM	2.06
12	FW001 FRAME	6.70	44	FW089 SPRING - FLIPPIN'	.93
13	GX4159 CARRIER GUIDE	1.61	45	WX4510 FLIPP'N LEVER SCREW	1.14
14	YX4406 THUMB BAR	5.36	46	GX4352 RIGHT SIDE CVR SCR	1.09
15	YX4151 WORM SHAFT	2.78	A47	GX4662A THICK WAVE WASHER	1.34
16	YX4158 WORM SHAFT GUIDE	4.58	B47	GX4662B THIN WAVE WASHER	1.24
17	FW347 LINE GUIDE CARRIER ASSY.	5.41	48	GX4258 SPOOL TENSION KN. RING	.85
18	GX4202 LINE GUIDE PAWL	1.53	49	GX4302 SPOOL TEN. KN. WSHR.(FL)	.46
19	GX4204 LINE GUIDE CARRIER SCR	1.66	50	GX4304 SPOOL TEN. KN. WSHR (SQ)	.46
20	YX4351 SET PLATE	8.73	51	GX4305 SPOOL TEN. KN. WSHR (RB)	.46
21	GX4665 SHAFT CLIP-E	.46	52	YX4259 SPOOL TENSION KNOB	3.75
22	FW036 LINK	1.29	53	FW055 DRAG KNOB	4.38
23	GX4402 RELEASE SLIDER	2.12	54	YX4701 HANDLE ASSY.	9.48
24	GX4406 THUMB BAR CAM	.92	55	GX4703 HANDLE NUT LOCK	.85
25	GX4506 LINK SCREW	.69	56	VX4704 HANDLE NUT LOCK SCREW	.92
27	GX4502 SPOOL REL. SPRING	.88	57	WX4506 FLIPP'N LEVER	1.27
28	GX4656 RELEASE SLIDER SCREW	.88	58	FW024 RIGHT SIDE COVER	8.14
29	GX4256 PINION GEAR ASSY	2.64	59	GX4660 HANDLE WASHER	1.14
30	GX4401 PINION YOKE	1.09	60	GX4109 FRAME SCREW WSHR	.46
31	GX4403 PINION YOKE SPR	.88	61	GX4104 FRAME SCREW	1.43
32	GX4150 OSCILLATOR GEAR	2.93	62	GX4105 SET PLATE SHAFT WSHR	.46
33	GX4664 SET PLATE SHAFT	1.14	63	GX4657 CRANK SHAFT E-CLIP	.46
34	GX4655 CONTROL ELEMENT	1.14	64	GX4702 HANDLE NUT	.92

Prices subject to change without notice. Prices do not include postage and handling.

PLEASE ORDER BY PART NUMBER

Rev. 11/90

Zebco Division Brunswick Corporation, Box 270, Tulsa, OK 74101 USA 918-638-6881

