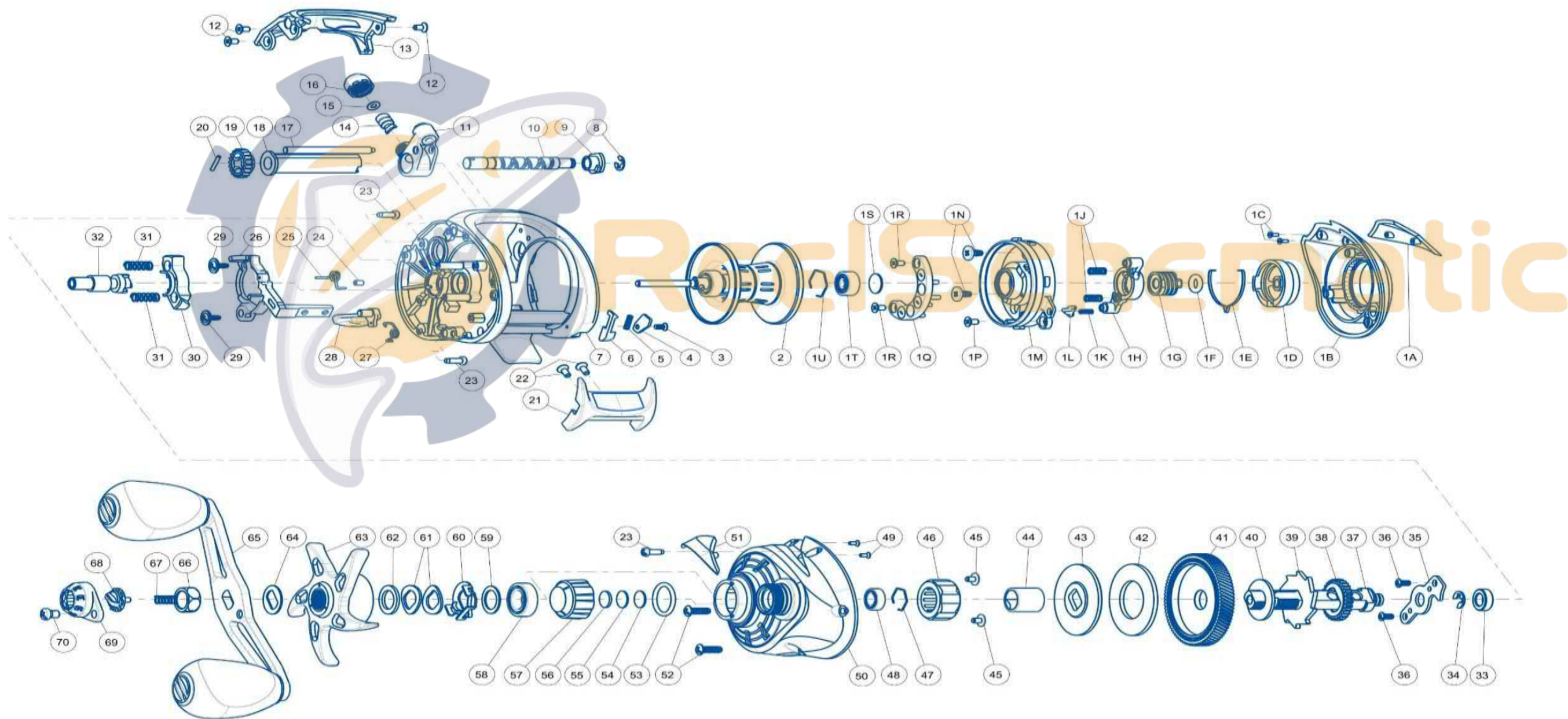


# QUANTUM<sup>®</sup>

## PL101SA



## QUANTUM PL101SA PART LIST

Key #	Description	Part No.	Qty	Key #	Description	Part No.	Qty
1	Palm Side Cover Kit include	BC4023-02	1	27	Kick Lever Spring	BC097-01	1
	1A - Palm Side Cosmetic Cover	BC133-02	1	28	Kick Lever	BC077-01	1
	1B - Palm Side Cover	BC023-02	1	29	Release Slider Screw	AC076-01	2
	1C - Cosmetic Cover Screw	BC053-01	2	30	Pinion Yoke	BC025-01	1
	1D - Magnet Dial	AC026-01	1	31	Yoke Spring	AC040-01	2
	1E - Magnet Dial Click Spring	AC108-01	1	32	Pinion Gear	BC011-02	1
	1F - Magnet Dial Friction Ring	BC105-01	1	33	Crank Shaft Bushing	ZW017-02	1
	1G - Slide Cam "B"	BC028-01	2	34	E-Clip	QW120-01	1
	1H - Slide Cam "A"	AC028-01	1	35	Crank Shaft Retainer	AC002-01	1
	1J - Magnet Adjust Spring	BC022-01	2	36	Crank Shaft Retainer Screw	AC050-01	1
	1K - Side Cover Locking Pin Spring	AC070-01	1	37	Crank Shaft	AC008-02	1
	1L - Side Cover Locking Pin	BC103-01	1	38	O/S Drive Gear	AC112-01	1
	1M - Spool Cover	BC051-01	1	39	Trip Ratchet	AC083-01	1
	1N - Spool Cover Screw "A"	AC107-01	2	40	Trip Ratchet Washer	AC111-01	1
	1P - Spool Cover Screw "B"	BC050-02	1	41	Drive Gear	BC012-02	1
	1Q - Magnet Assembly	AC330-01	3	42	Drag Disc	AC059-01	1
	1R - Slide Cam Screw	BC050-02	2	43	Drag Washer	AC045-01	1
	1S - Spool Tension Shim	BC121-01	1	44	One Way Clutch Sleeve	AC052-01	1
	1T - Palm Side Spool Shaft Ball Bearing	QV017-05	1	45	One Way Bearing Screw	AC053-01	2
	1U - Clip Ring	AC080-01	1	46	One Way Bearing	AC063-01	1
2	Spool Assembly	BC321-01	1	47	Spool Tension Knob Ball Bearing Retaine	AC080-01	1
3	Locking Lever Retainer Screw	YB107-03	1	48	Spool Tension Knob Ball Bearing	SW017-06	1
4	Locking Lever Retainer	AC056-02	1	49	Gear Side Cosmetic Cover Screw	BC053-01	2
5	Locking Lever Spring	AC096-01	1	50	Gear Side Cover Assembly	BC324-02	1
6	Locking Lever	BC119-01	1	51	Gear Side Cosmetic Cover	BC145-02	1
7	Frame	BC001-02	1	52	Gear Side Cover Screw "A"	AC057-02	2
8	E-Clip	NX092-01	1	53	Spool Tension Knob O-Ring	QW101-01	1
9	Worm Shaft Bushing	BC067-01	1	54	Spool Tension Washer	AC032-01	1
10	Worm Shaft	AC072-01	1	55	Spool Tension Support Washer	BC032-01	1
11	Line Guide Carrier	AC047-01	1	56	Spool Cushion Washer	AC082-01	1
12	Front Support Screw	BC050-02	3	57	Spool Tension Knob	AC033-01	1
13	Front Support	BC099-02	1	58	Crank Shaft Ball Bearing	TW058-09	1
14	Line Guide Pawl	AC006-01	1	59	Crank Shaft Washer	BC035-01	1
15	Carrier Washer	AC035-01	1	60	Drag Click Spring Assembly	AC4114-01	1
16	Line Guide Carrier Screw	AC007-01	1	61	Spring "D" Washer	AC046-01	2
17	Stablizer Bar	AC061-01	1	62	Star Drag Washer	AC038-01	1
18	Worm Shaft Guide	AC016-01	1	63	Star Drag	BC055-01	1
19	O/S Pinion Gear	AC085-01	1	64	Handle Washer	AC054-01	1
20	O/S Pinion Gear Pin	AC093-01	1	65	Handle Assembly	AC318-04	1
21	Thumb Bar	AC009-01	1	66	Handle Nut	AC003-02	1
22	Thumb Bar Screw	BC050-01	2	67	Line Memo Spring	AC022-01	1
23	Gear Side Cover Screw "B"	BC057-02	3	68	Line Memo Dial	AC162-01	1
24	Spring Collar	AC088-01	1	69	Handle Nut Cap	AC034-02	1
25	Release Slider Spring	BC104-01	1	70	Handle Nut Cap Screw	BC065-02	1
26	Release Slider	BC039-01	1				