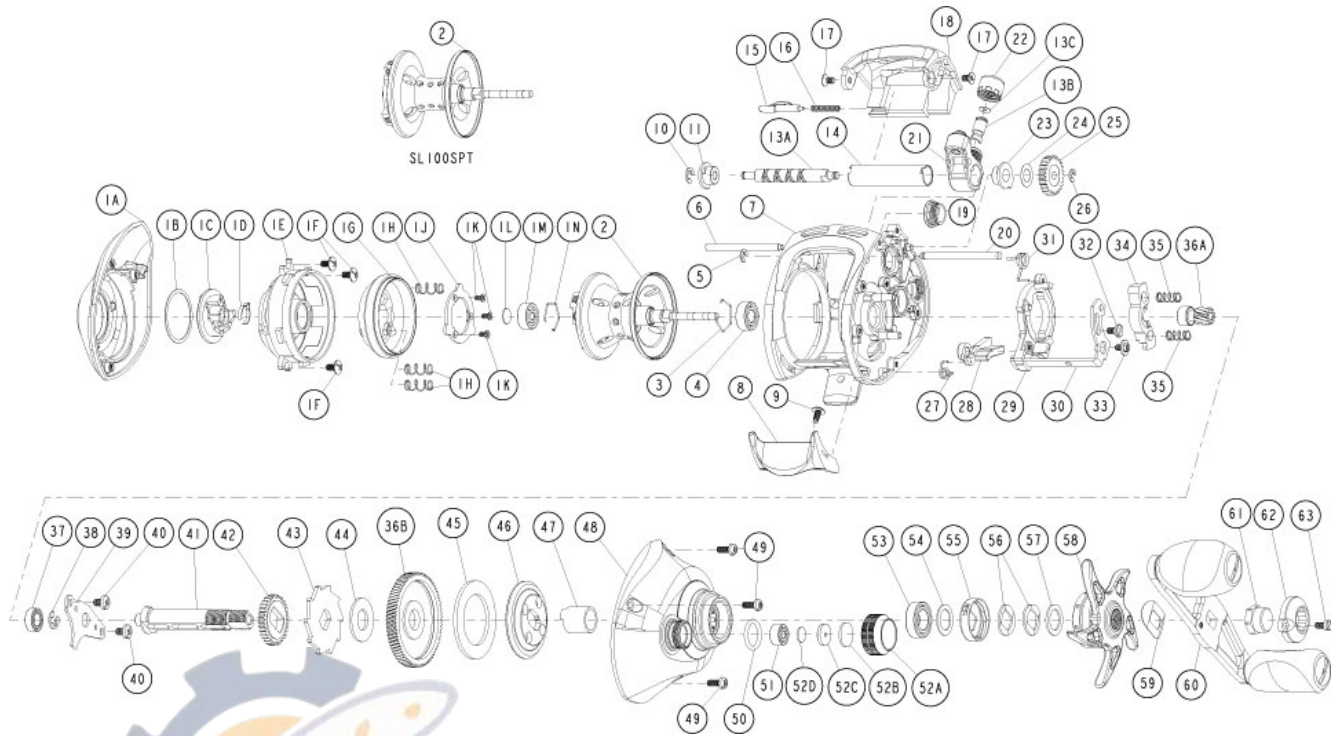


# QUANTUM

## SL100SPT



Quantum SL100SPT Bait Cast Reel Part List

Key #	Description	Part No.	Key #	Description	Part No.
1	Palm Side Cover Kit includes	EW4023-04	28	Kick Lever	DW077-01
1A	- Palm Side Cover Assembly	IN KIT	29	Release Slider	DW039-01
1B	- Centrifugal Dial Washer	IN KIT	30	Release Slider Link	DW036-01
1C	- Centrifugal Dial Assembly	IN KIT	31	Release Slider Spring	DW104-01
1D	- Centrifugal Dial Spring	IN KIT	32	Release Slider Link Screw	EW125-02
1E	- Spool Cover	IN KIT	33	Release Slider Screw	CX076-03
1F	- Spool Cover Screw	IN KIT	34	Pinion Yoke	EW025-01
1G	- Brake Ring Assembly	IN KIT	35	Yoke Spring	GX040-01
1H	- Brake Ring Slider Spring	IN KIT	36	Gear Kit Includes	EW4011-03
1J	- Brake Ring Slider Spring Retainer	IN KIT	36A	- Pinion Gear Assembly	IN KIT
1K	- Brake Ring Spring Retainer Screw	IN KIT	36B	- Drive Gear	IN KIT
1L	- Spool Tension Shim	IN KIT	37	Crank Shaft Ball Bearing - L	SW017-01
1M	- Spool Shaft Ball Bearing - Palm	IN KIT	38	E-Clip	QW120-01
1N	- Clip Ring	IN KIT	39	Crank Shaft Retainer	DW002-02
2	Spool Assembly	FW321-09	40	Crank Shaft Retainer Screw	JX107-02
3	Clip Ring	EX080-01	41	Crank Shaft	EW008-01
4	Spool Shaft Ball Bearing - Gear	EX017-02	42	O/S Drive Gear	DW112-01
5	E-Clip	NX090-01	43	Trip Ratchet	DW083-01
6	Stabilizer Bar - A	DW061-01	44	Trip Ratchet Washer	QW111-01
7	Frame	IN KIT	45	Drag Disc	UX059-01
8	Thumb Bar	DW009-02	46	Drag Washer	EW045-01
9	Thumb Bar Screw	CW125-01	47	One Way Clutch Sleeve	UX052-01
10	E-Clip	NX092-01	48	Gear Side Cover Assembly	DW324-20
11	Wrom Shaft Bushing - Palm	AB067-01	49	Gear Side Cover Screw	BV123-05
13	Worm Shaft Kit Includes	HV4072-02	50	Tension Knob O-Ring	QW101-01
13A	- Worm Shaft	IN KIT	51	Tension Knob Ball Bearing	SW117-01
13B	- Line Guide Pawl	IN KIT	52	Spool Tension Knob Kit includes	DW4033-07
13C	- Line Guide Carrier Washer	IN KIT	52A	- Spool Tension Knob	IN KIT
14	Worm Shaft Guide	DW016-01	52B	- Spool Cushion Washer	IN KIT
15	Side Cover Locking Lever	YX119-02	52C	- Spool Tension Collar	IN KIT
16	Side Cover Locking Lever Spring	ZW096-01	52D	- Spool Tension Washer	IN KIT
17	Hood Screw	HX107-02	53	Crank Shaft Ball Bearing	TW058-01
18	Hood	DW027-06	54	Crank Shaft Ball Bearing Washer	TW035-02
19	Oil Cap Screw	DW150-07	55	Drag Click Spring Assembly	YX4114-02
20	Stabilizer Bar - B	WP061-01	56	Drag "D" Washer	JX046-01
21	Line Guide Carrier	DW047-04	57	Star Drag Washer	ZW032-01
22	Line Guide Carrier Screw	ZW007-01	58	Star Drag	DW055-07
23	Worm Shaft Bushing - Gear Side	DW068-01	59	Handle Washer	NX054-01
24	O/S Pinion Gear Washer	EX035-01	60	Handle Assembly	HX318-01
25	O/S Pinion Gear	DW085-01	61	Handle Nut	DW003-05
26	E-Clip	NX090-01	62	Handle Nut Cap	DW034-02
27	Kick Lever Spring	GX097-01	63	Handle Nut Cap Screw	DW050-02