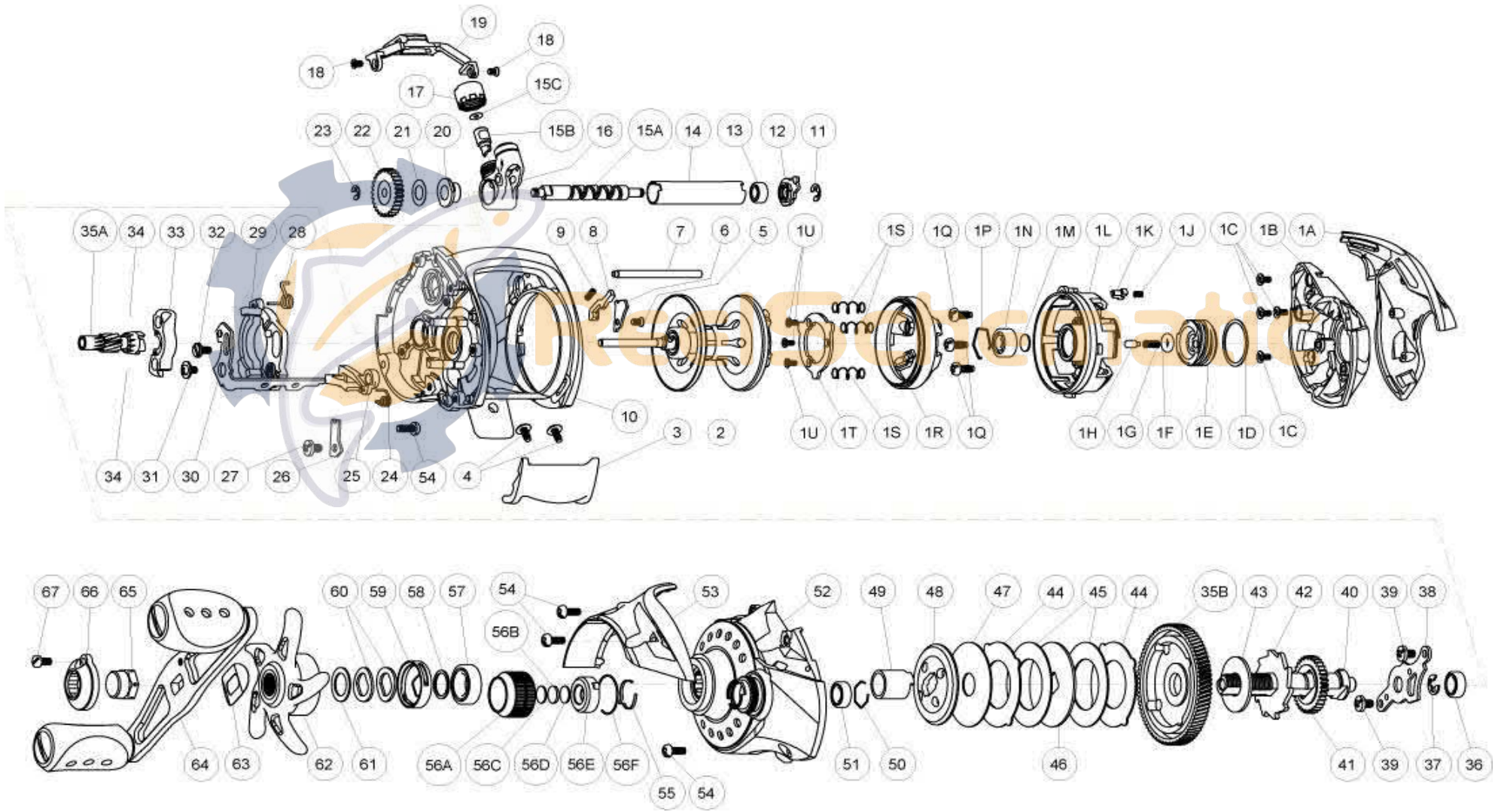


# QUANTUM

## SL101HPTA



# QUANTUM<sup>®</sup>

## SL101HPTA

### Quantum SL101HPTA Bait Cast Reel Part List

Key #	Description	Part No.	Qty.	Key #	Description	Part No.	Qty.
1	Palm Side Cover Kit include	TB4023-02	1	28	Release Slider Spring	TB104-01	1
	1A - Cosmetic Cover - Palm	TB133-01	1	29	Release Slider	TB039-01	1
	1B - Palm Side Cover	TB023-01	1	30	Release Slider Link	LB036-01	1
	1C - Cosmetic Cover Screw	SB050-01	4	31	Release Slider Screw	CX076-03	1
	1D - Centrifugal Dial Washer	SB111-01	1	32	Release Slider Link Screw	EW125-02	1
	1E - Centrifugal Dial	TB026-01	1	33	Pinion Yoke	TB025-01	1
	1F - Centrifugal Dial Friction Ring	SB105-01	1	34	Yoke Spring	GX040-01	2
	1G - Centrifugal Dial Click Spring	YW114-01	1	35	Gear Kit Include	TB4011-02	1
	1H - Centrifugal Dial Click Pawl	PW098-01	1		35A - Pinion Gear	TB011-02	1
	1J - Side Cover Locking Pin Spring	KW070-01	1		35B - Drive Gear	TB012-02	1
	1K - Side Cover Locking Pin	SB103-01	1	36	Crank Shaft Ball Bearing - L	SW017-01	1
	1L - Spool Cover	TB051-01	1	37	E-Clip	QW120-01	1
	1M - Spool Tension Shim	QW032-04	1	38	Crank Shaft Retainer	SB002-01	1
	1N - Spool Shaft Ball Bearing - Palm	QV017-01	1	39	Crank Shaft Retainer Screw	JX107-04	2
	1P - Clip Ring	HV080-01	1	40	Crank Shaft	YW008-04	1
	1Q - Spool Cover Screw	WW107-01	3	41	O/S Drive Gear	SB112-01	1
	1R - Brake Ring Assembly	TB342-01	1	42	Trip Ratchet	PW083-02	1
	1S - Brake Ring Slider Spring	DW070-01	3	43	Trip Ratchet Washer	YW111-01	1
	1T - Brake Ring Slider Spring Retainer	DW129-02	1	44	Drag Key Washer	PW048-01	2
	1U - Brake Ring Slider Spring Retainer Screw	DW107-01	3	45	Drag Disc - A	PW059-01	2
2	Spool Assembly	SB321-02	1	46	Drag "D" Washer	YW045-01	1
3	Thumb Bar	LX009-01	1	47	Drag Disc - B	YW059-01	1
4	Thumb Bar Screw	CW125-01	2	48	Drag Washer	PW045-02	1
5	Side Cover Locking Lever Screw	KW107-01	1	49	One Way Clutch Sleeve	UX052-01	1
6	Side Cover Locking Lever Retainer	SB056-02	1	50	Spool Tension Knob Ball Bearing Re	EB080-01	1
7	Stabilizer Bar	DW061-02	1	51	Tension Knob Ball Bearing	SW017-01	1
8	Side Cover Locking Lever	TB119-01	1	52	Gear Side Cover Assembly	TB324-02	1
9	Side Cover Locking Lever Spring	KW096-01	1	53	Cosmetic Cover - Gear	TB145-01	1
10	Frame	TB001-01	1	54	Gear Side Cover Screw	BV123-05	4
11	E-Clip	NX092-01	1	55	Tension Knob Click Spring	PW114-01	1
12	Bearing Retainer	TB067-01	1	56	Tension Knob Kit Include	PW4033-07	1
13	Worm Shaft Ball Bearing	XX117-01	1		56A-Spool Tension Knob	PW033-07	1
14	Worm Shaft Guide	SB016-01	1		56B-Spool Cushion Washer	EX082-02	1
15	Worm Shaft Kit Include	HV4072-02	1		56C-Spool Tension Support Washer	PW032-01	1
	15A - Worm Shaft	HV072-02	1		56D-Spool Tension Washer	QW032-04	1
	15B - Line Guide Pawl	CX006-01	1		56E-Tension Knob Click Ratchet	PW113-01	1
	15C - Line Guide Carrier Washer	BV035-01	1		56F-Tension Knob Click Ratchet Retainer	YW080-01	1
16	Line Guide Carrier Assembly	SB347-01	1	57	Crank Shaft Ball Bearing	TW058-03	1
17	Line Guide Carrier Screw	ZW007-01	1	58	Crank Shaft Ball Bearing Washer	TW035-02	1
18	Front Support Screw	KW107-02	2	59	Drag Click Spring Assembly	YX4114-01	1
19	Front Support	TB099-01	1	60	Spring "D" Washer	JX046-01	2
20	Worm Shaft Bushing - Gear Side	PW068-01	1	61	Star Drag Washer	ZW032-01	1
21	O/S Pinion Gear Washer	EX035-01	1	62	Star Drag	GW055-01	1
22	O/S Pinion Gear	SB085-01	1	63	Handle Washer	NX054-01	1
23	E-Clip	NX090-01	1	64	Handle Assembly	HX318-07	1
24	Kick Lever Spring	TB097-01	1	65	Handle Nut	DW003-06	1
25	Kick Lever	YW077-01	1	66	Handle Nut Cap	DW034-02	1
26	Kick Lever Guide Plate	SB161-01	1	67	Handle Nut Cap Screw	DW050-02	1
27	Kick Lever Guide Plate Screw	JX107-02	1				