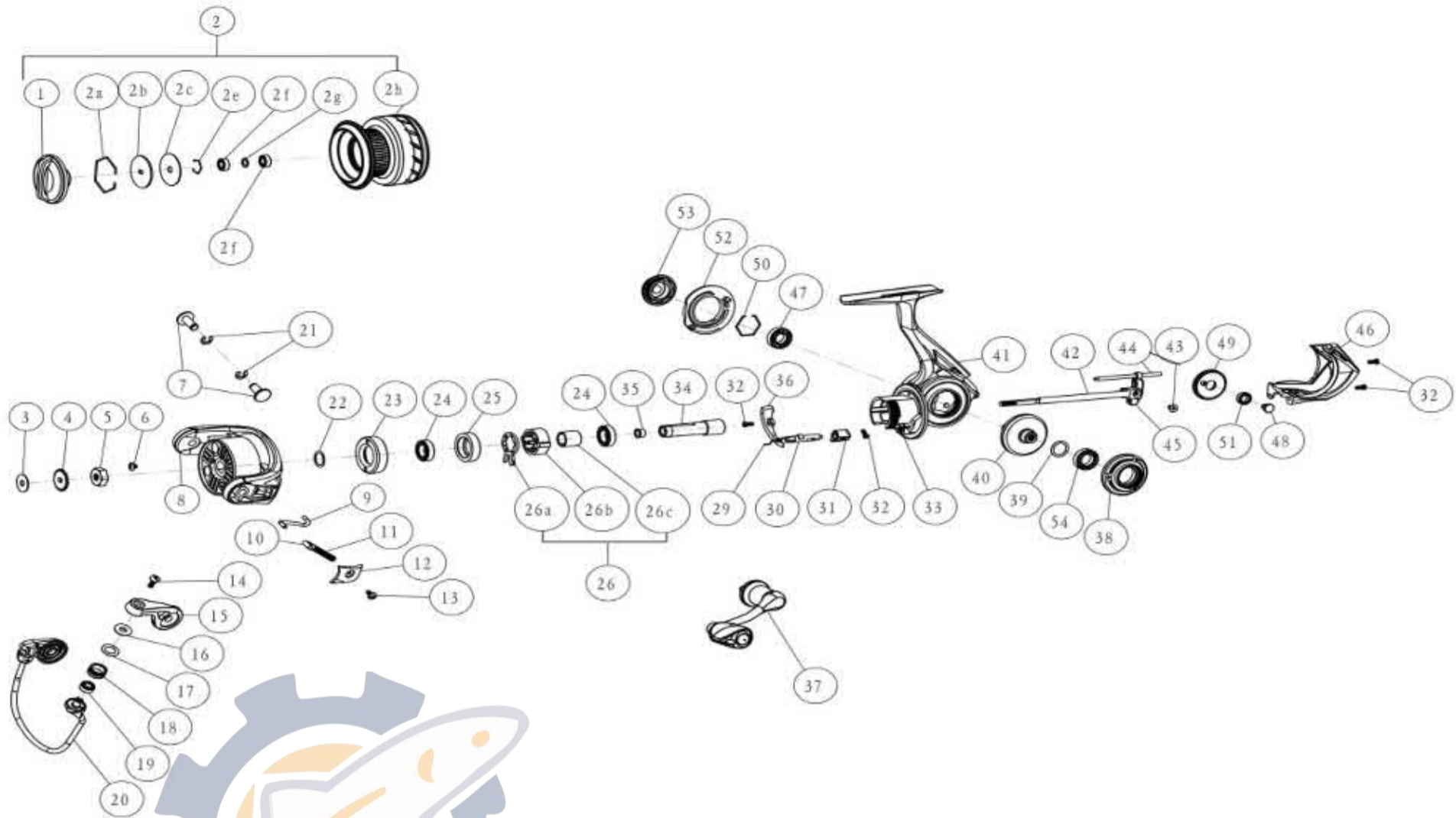


QUANTUM

TH10A



Quantum THROTTLE - TH10A Part List

| Key No. | Description | Part No. | Qty | Key No. | Description | Part No. | Qty |
|---------|-------------------------------|-----------|-----|---------|----------------------------|-----------|-----|
| | | TH10 | | | | TH10 | |
| 1 | Drag Knob Assembly | AAA332-02 | 1 | 25 | Clutch Bearing Adapter | SAD190-01 | 1 |
| 2 | Spool Kit Include | SAD421-02 | 1 | 26 | One way clutch kit include | SAD363-02 | 1 |
| | 2A-Retainer Ring | SAD038-01 | 1 | | 26A-One Way Clutch lever | BAA064-02 | 1 |
| | 2B-Drag Washer "D" | SAD080-01 | 1 | | 26B-One Way Clutch | BAA063-02 | 1 |
| | 2C-Drag Washer "B" | SAD035-01 | 1 | | 26C-Sleeve | SAD139-02 | 1 |
| | 2E-Retainer Ring | AA105-01 | 1 | 29 | Stopper Cam spring | SAD089-01 | 1 |
| | 2F-Ball Bearing | YAD158-01 | 1 | 30 | Stopper Cam | SAD090-01 | 1 |
| | 2G-Bushing | SAD076-01 | 2 | 31 | Stopper Lever | BAA059-01 | 1 |
| | 2H-Spool Assembly | SAD321-02 | 1 | 32 | Stopper Lever Screw | BAA135-01 | 4 |
| 3 | Spool Adjust Washer | SAD039-01 | 1 | 33 | Clutch spring | BAA216-01 | 1 |
| 4 | Clicker Gear | SAD037-01 | 2 | 34 | Pinion Gear | SAD011-01 | 1 |
| 5 | Rotor Nut | SAD006-01 | 1 | 35 | Pinion Bushing | AA014-01 | 1 |
| 6 | Rotor Nut Lock Screw | BAA094-01 | 1 | 36 | Trip Ramp | SAD119-01 | 1 |
| 7 | Pin - Arm Lever / Bail Holder | SAD042-02 | 1 | 37 | Handle Assembly | NAE318-01 | 1 |
| 8 | Rotor | SAD009-02 | 2 | 38 | Body Side Ring | SAD142-02 | 1 |
| 9 | Kick Lever | SAD019-01 | 1 | 39 | Drive Gear Adjust Washer | TAD105-01 | 1 |
| 10 | Actuator | SAD031-01 | 1 | 40 | Drive Gear Assembly | SAD012-01 | 1 |
| 11 | Bail Spring | SAD022-01 | 1 | 41 | Body Assembly | SAD301-02 | 1 |
| 12 | Arm Lever Cover | SAD087-01 | 1 | 42 | Main Shaft | SAD015-01 | 1 |
| 13 | Arm Lever Cover Screw | TAD077-01 | 1 | 43 | Main Shaft Screw | AA100-01 | 1 |
| 14 | Line Roller Screw | BAA108-01 | 1 | 44 | O/S Guide Pin | SAD093-01 | 1 |
| 15 | Arm Lever | SAD007-02 | 1 | 45 | O/S Slider | SAD025-01 | 1 |
| 16 | Line Roller Collar | CAA102-01 | 1 | 46 | Body Rear Cap | SAD140-02 | 1 |
| 17 | Line Roller Washer | BAA102-01 | 1 | 47 | Body Ball Bearing | TW058-01 | 1 |
| 18 | Line Roller | BAA004-01 | 1 | 48 | O/S Gear Pin | SAD062-02 | 1 |
| 19 | Line Roller Ball Bearing | GH202-01 | 1 | 49 | O/S Gear | SAD053-01 | 1 |
| 20 | Bailwire Assembly | SAD347-02 | 1 | 50 | Retainer Ring | TAD038-01 | 1 |
| 21 | "E" clip | AA034-01 | 1 | 51 | O/S Gear Bearing | YAD158-01 | 1 |
| 22 | Rotor Adjust Washer | AAA110-01 | 2 | 52 | Body Trim Ring | SAD145-02 | 1 |
| 23 | Clutch Bearing Cap | SAD040-01 | 1 | 53 | Handle Cap | TAD054-02 | 1 |
| 24 | Pinion Ball Bearing | AAA028-03 | 1 | 54 | Body Ball Bearing | AAA028-01 | 1 |