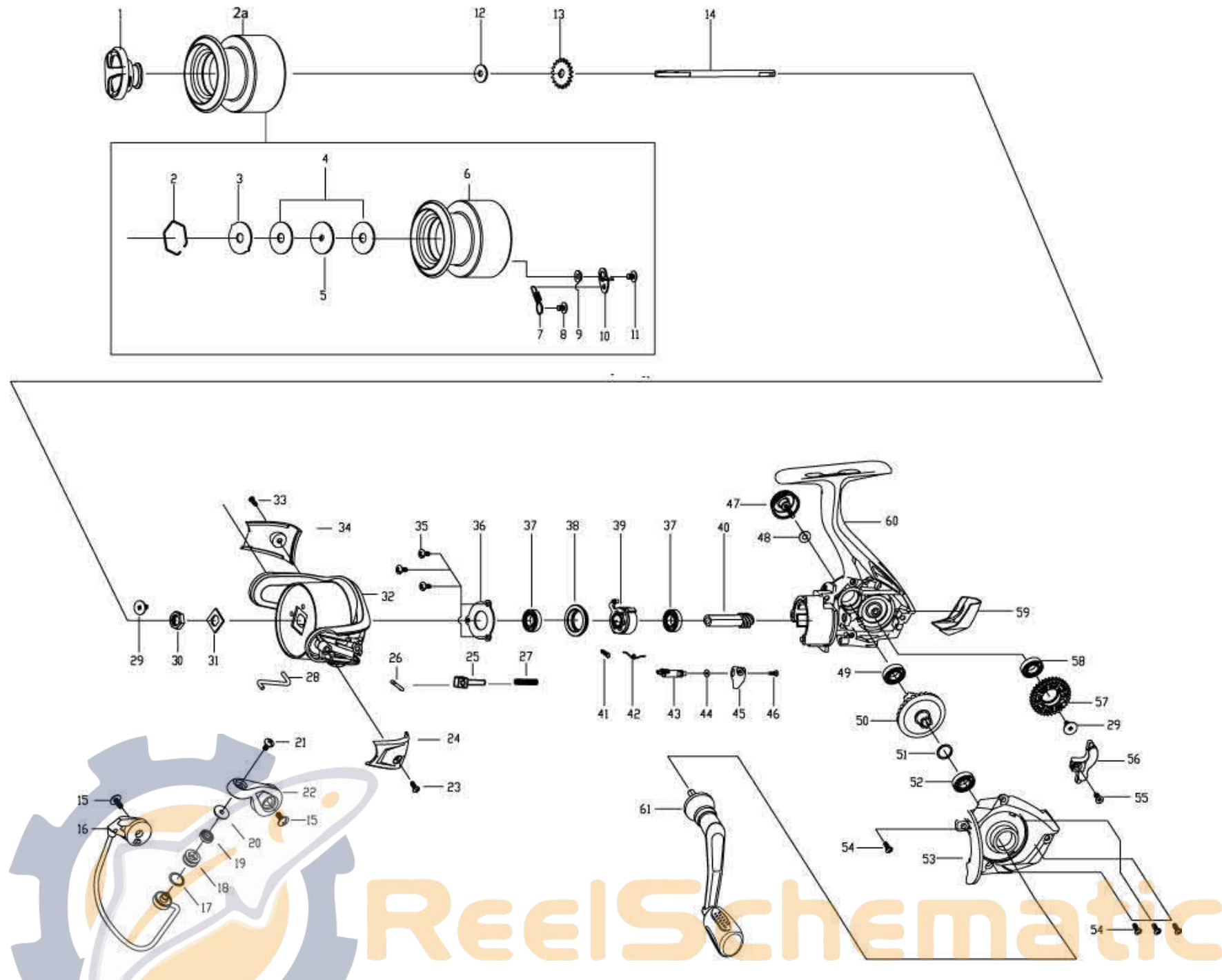


QUANTUM[®]

Trax 20



Quantum Trax 20 Spinning Reel Part List

| Key # | Description | Qty | Part No. | Key # | Description | Qty | Part No. |
|-------|-----------------------------|-----|-----------|-------|-------------------------------|-----|-----------|
| 1 | Drag Knob Assembly | 1 | LAD332-02 | 32 | Rotor | 1 | |
| 2a | Spool Assembly | 1 | LAD321-05 | 33 | Screw - Bail Holder Sidecover | 1 | |
| 2 | Retainer Ring | 1 | | 34 | Bail Holder Sidecover | 1 | |
| 3 | Ear Washer | 1 | | 35 | Screw - Bearing Retainer | 3 | |
| 4 | Drag Friction Washer | 2 | | 36 | Ball Bearing Retainer | 1 | |
| 5 | Drag Key Washer | 1 | | 37 | Ball Bearing - Pinion | 2 | |
| 6 | Spool | 1 | | 38 | Ball Bearing Holder | 1 | |
| 7 | Spool Clicker Spring | 1 | | 39 | Anti-Reverse Bearing | 1 | LAD063-01 |
| 8 | Screw - Clicker | 1 | | 40 | Pinion Gear | 1 | |
| 9 | Clicker Spring Bushing | 1 | | 41 | Anti-Reverse Spring | 1 | |
| 10 | Spool Clicker | 1 | | 42 | Anti-Reverse Lever Spring | 1 | |
| 11 | SCREW | 1 | | 43 | Anti-Reverse Lever | 1 | |
| 12 | Clicker Gear Washer | 1 | | 44 | Washer | 1 | |
| 13 | Clicker Gear | 1 | | 45 | Anti-Reverse Switch | 1 | |
| 14 | Main Shaft | 1 | | 46 | Anti-Reverse Switch Screw | 1 | |
| 15 | Screw - Bail Holder | 1 | | 47 | Handle Screw Cap | 1 | LAD054-01 |
| 16 | Bail Assembly | 1 | LAD347-03 | 48 | Handle Screw Cap Washer | 1 | LAD105-01 |
| 17 | Line Roller Spacer | 1 | LAD080-01 | 49 | Ball Bearing - Body | 1 | |
| 18 | Line Roller | 1 | LAD004-01 | 50 | Drive Gear | 1 | |
| 19 | Ball Bearing - Line Roller | 1 | LAD158-01 | 51 | Drive Gear Adjust Washer | 1 | |
| 20 | Line Roller Washer | 1 | LAD102-01 | 52 | Ball Bearing - Sidecover | 1 | |
| 21 | Screw - Line Roller | 1 | LAD108-01 | 53 | Sidecover | 1 | |
| 22 | Arm Lever | 1 | LAD007-01 | 54 | Screw - Sidecover | 4 | |
| 23 | Screw - Arm Lever Sidecover | 1 | | 55 | Screw - Main Shaft | 1 | |
| 24 | Arm Lever Sidecover | 1 | | 56 | Slider | 1 | |
| 25 | Bail Actuator Holder | 1 | | 57 | Oscillation Gear | 1 | |
| 26 | Bail Actuator | 1 | | 58 | Bearing - Oscillation Gear | 1 | |
| 27 | Bail Spring | 1 | | 59 | Rear Cover | 1 | |
| 28 | Kick Lever | 1 | | 60 | Body | 1 | |
| 29 | Screw | 1 | | 61 | Handle Assembly | 1 | LAD318-02 |
| 30 | Rotor Nut | 1 | | | | | |
| 31 | Rotor Nut Washer | 1 | | | | | |