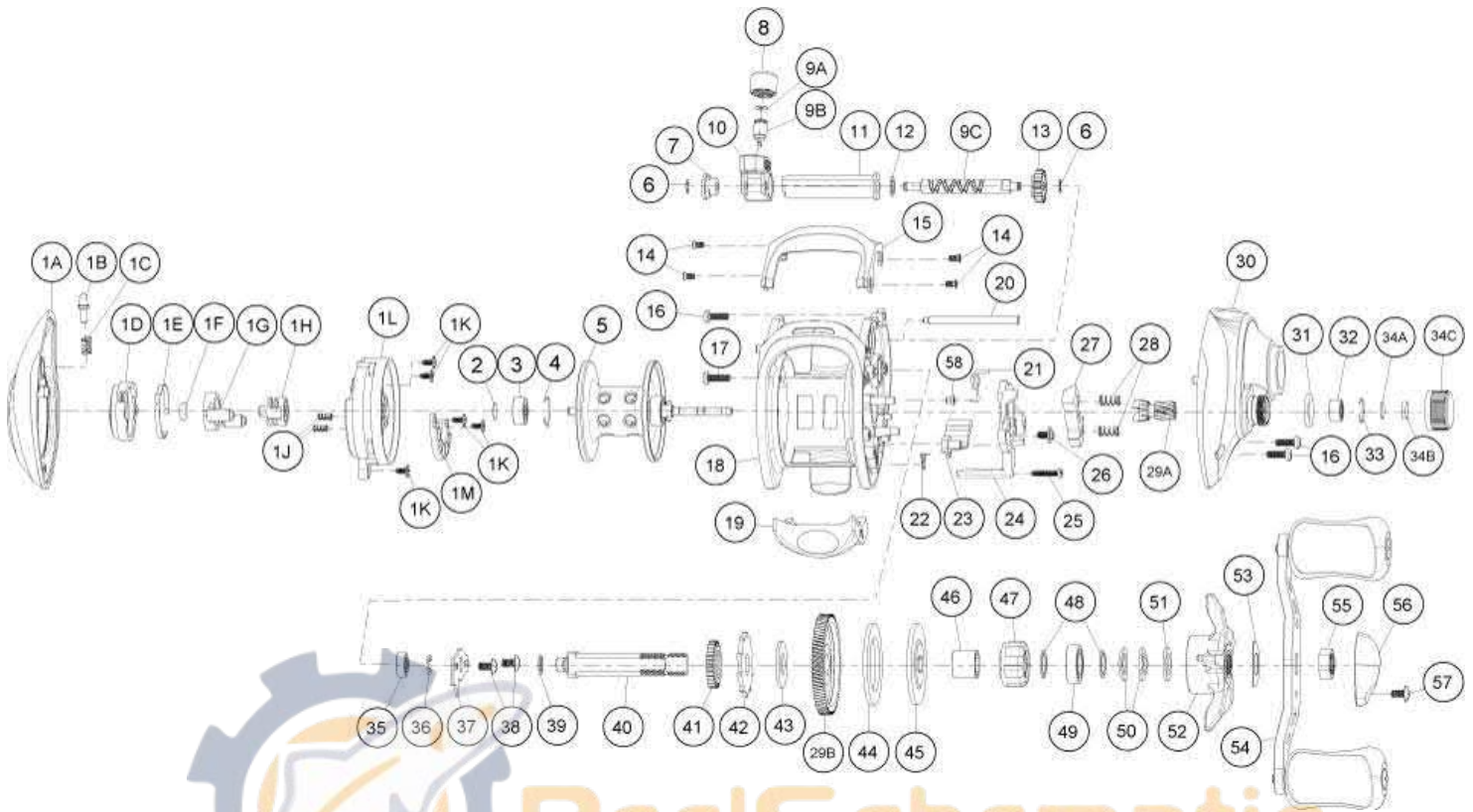


QUANTUM

Ultrex

UL100S



Quantum UL100S Baitcast Reel Part List

Key #	Description	Qty.	Part No.	Key #	Description	Qty.	Part No.
1	Palm Side Cover Kit	1	GB4023-02	25	Thumb Bar Screw	1	ZW053-01
1A	Palm Side Cover Assembly	1	N/A	26	Release Slider Screw	1	KW125-01
1B	Palm Side Locking Lever	1	GB119-01	27	Pinion Yolk	1	NW025-01
1C	Locking Lever Spring	1	MW096-01	28	Pinion Yolk Spring	2	KW040-01
1D	Casting Control Dial	1	HW026-02	29	Gear Kit	1	LW4011-01
1E	Control Dial Clicker Spring	1	MW108-01	29A	Pinion Gear	1	LW011-01
1F	Control Dial Friction Ring	1	NX105-01	29B	Drive Gear	1	UX012-01
1G	Slide Cam "A"	1	EB028-01	30	Gear Side Cover Assembly	1	GB324-02
1H	Slide Cam "B"	1	JB028-01	31	Spool Tension Knob O-Ring	1	QW101-01
1J	Magnet Plate Spring	2	EB071-01	32	Spool Tension Bearing	1	GB117-01
1K	Screw	4	EB125-01	33	Spool Tension Knob Bearing Retainer	1	EB080-01
1L	Spool Cover	1	EB042-01	34	Spool Tension Knob Kit	1	JB4032-01
1M	Magnet Plate Assembly	1	EB330-01	34A	Spool Tension Knob Washer	1	QW032-04
2	Spool Shaft Washer (Palm Side)	1	QW032-04	34B	Spool Cushion Washer	1	MV082-01
3	Spool Shaft Bearing (Palm Side)	1	JB017-01	34C	Spool Tension Knob	1	HW033-03
4	Bearing Retainer Ring	1	HV080-01	35	Crank Shaft Bearing (Frame Side)	1	GB017-01
5	Spool Assembly	1	GB321-02	36	Crank Shaft E-Clip	1	QW120-01
6	Worm Shaft E-Clip	2	NX090-01	37	Crank Shaft Retainer Plate	1	KW002-01
7	Worm Shaft Bushing	1	KW067-01	38	Crank Shaft Retainer Plate Screw	2	QW125-02
8	Line Guide Pawl Screw	1	KW007-01	39	Adjustment Washer	1	EB032-01
9	Worm Shaft Kit	1	KW4072-01	40	Crank Shaft	1	JB008-01
9A	Line Guide Pawl Washer	1	BV035-01	41	Worm Shaft Drive Gear	1	ZW112-01
9B	Line Guide Pawl	1	KW006-01	42	Trip Ratchet	1	KW083-01
9C	Worm Shaft	1	N/A	43	Trip Ratchet Washer	1	KW111-01
10	Line Guide Carrier Assembly	1	EB347-02	44	Drag Washer	1	UX059-01
11	Worm Shaft Guide	1	KW016-01	45	Drag Key Washer	1	KW045-01
12	Worm Shaft Washer (Gear Side)	1	KW035-01	46	One Way Clutch Sleeve	1	KW052-01
13	Worm Shaft Pinion Gear	1	HV085-01	47	One Way Clutch	1	EX063-01
14	Front Support Screw	4	MW107-01	48	Bearing Washer	2	KW032-01
15	Front Support Assembly	1	GB399-02	49	Crank Shaft Bearing (Handel Side)	1	TW058-02
16	Gear Side Cover Screw "A"	3	KW123-01	50	Star Drag Spring Washer	2	JX046-01
17	Gear Side Cover Screw "B"	1	GB123-01	51	Star Drag Washer	1	ZW032-01
18	Frame Assembly	1	GB301-02	52	Star Drag Assembly	1	NW355-04
19	Thumb Bar Assembly	1	KW309-03	53	Handle Spring Washer	1	QW054-01
20	Pillar	1	KW061-01	54	Handle Assembly	1	GB318-01
21	Release Slider Spring	1	KW104-01	55	Handle Nut	1	QW003-01
22	Kick Lever Spring	1	JB097-01	56	Handel Nut Reatiner	1	KV034-04
23	Kick Lever	1	JB077-01	57	Handel Nut Reatiner Screw	1	LW057-01
24	Release Slider	1	NW039-01	58	Release Slider Spring Bushing	1	MW103-01