

The Redington Crosswater disc drag reel is designed and manufactured to the high quality and performance standards that distinguish all Redington products. Utilizing innovative design and state-of-the-art manufacturing, we are certain your new Redington Crosswater disc drag reel will exceed your expectations.

Proper care and maintenance of your Redington Crosswater reel will insure its long lasting performance.

Care and Maintenance of Your New Crosswater Reel

- To clean the reel, rinse any dirt or grit off in freshwater.
- Use a cloth or toothbrush with warm soapy water to remove any dirt and rinse again.
- Separate spool from frame and dry thoroughly.
- Lubricate the main shaft with thin layer of lithium-type grease.
- Unscrew the drag knob and put a small amount of grease on the drag knob threads.
- Store reel away from extreme heat.

Crosswater Reel Warranty

Each new Redington Crosswater fly reel purchased from an authorized retailer is covered by our one-year original owner guarantee. For more details, see the included warranty card.

The Redington Crosswater reel is available in the following sizes:

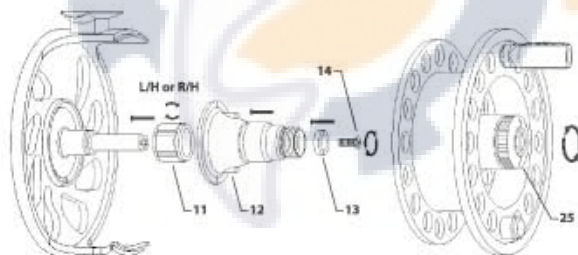
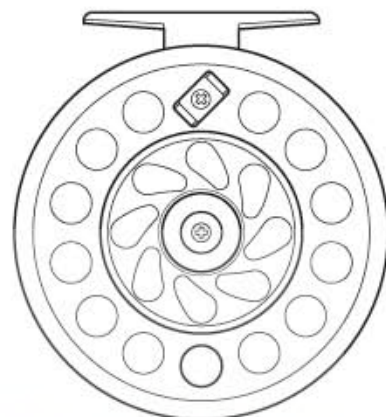
Reel size	Line wt.	Yards/lb.
CW2 4/5/6	5 wt.	100/20
CW2 7/8/9	8 wt.	175/20

Extra spools are available separately.



www.redington.com

Crosswater
DISC DRAG FLY REEL

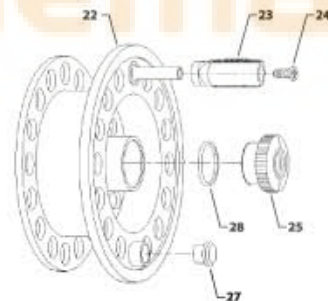
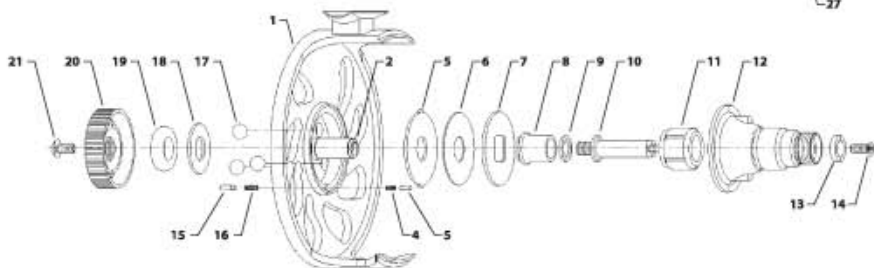


Retrieve Conversion

1. Remove the spool from the frame by removing the spool lock nut (part 25)
2. Remove the retainer screw (part 14)
3. Remove the drag cover retainer (part 13)
4. Remove the drag cover (part 12)
5. Remove and invert one way bearing (part 11)
6. Replace drag cover, drag cover retainer and retainer screw (parts 12, 13, 14)

Replacement Parts

Reel handles, reel feet, cover caps and screws are available by calling Redington Warranty Department at 1.866.498.7243. All other repairs require the reel to be sent to Redington Warranty Department for service. For details, see enclosed warranty card.



NO. PART NAME

1	BODY
2	INSERT SHAFT
3	CLICKER
4	CLICKER SPRING
5	FRICTION PLATE
6	DRAG WASHER
7	DRAG DISK
8	DRAG DISK BUSH
9	SLIDE WASHER
10	FLANGED SHAFT
11	ONE-WAY BEARING
12	DRAG COVER
13	DRAG COVER RETAINER
14	RETAINER SCREW
15	DRAG KNOB CLICKER
16	CLICKER SPRING
17	PUSH BALL
18	PUSH PLATE
19	COMPRESSION O-RING
20	DRAG KNOB
21	DRAG KNOB SPRING
22	SPOOL
23	HANDLE KNOB
24	HANDLE KNOB SCREW
25	SPOOL LOCK NUT
26	NUT O-RING
27	COUNTER BALANCE