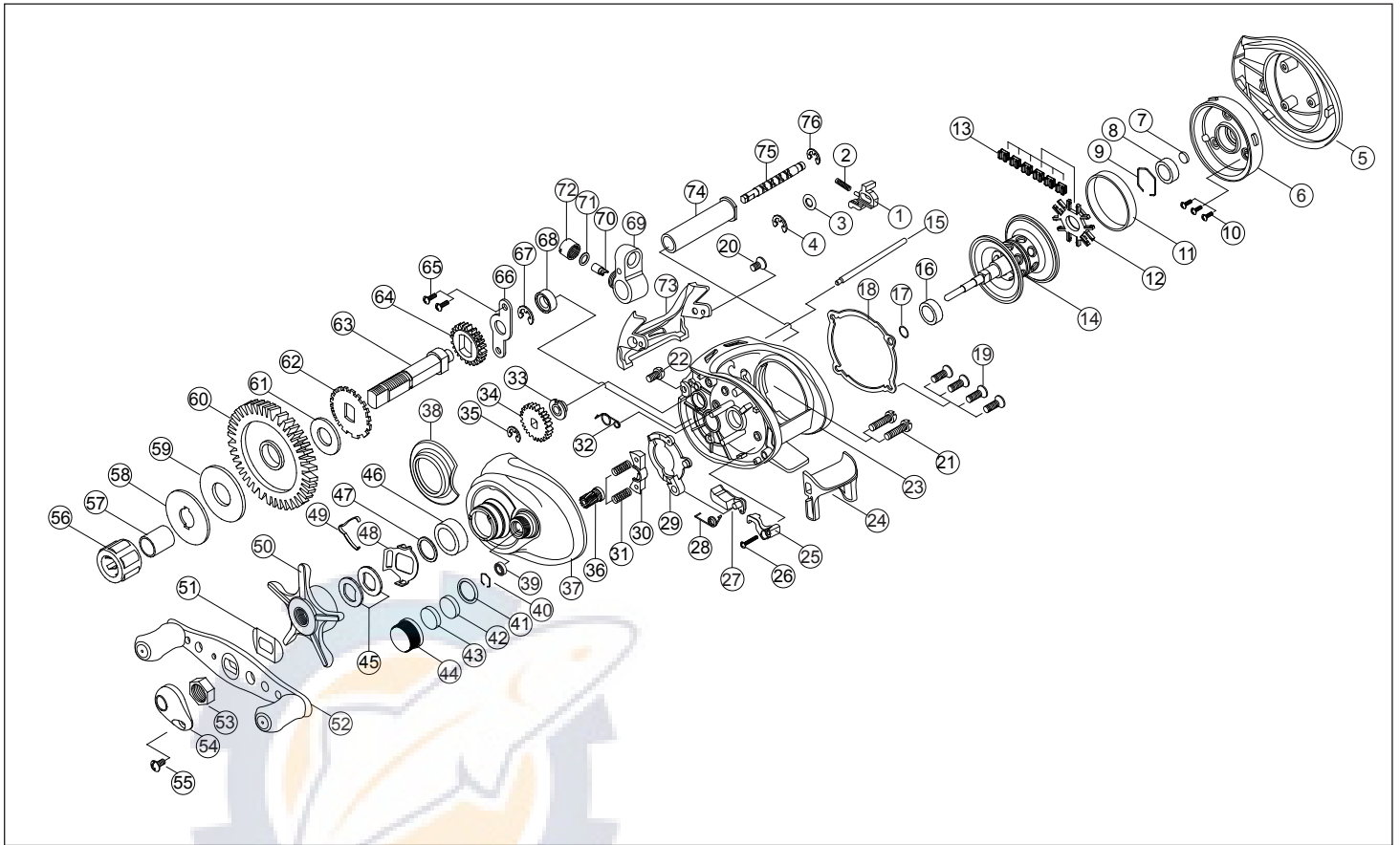


Eluzion



PART LIST

- | | | | |
|--------------------------------|-------------------------|--------------------------------|--------------------------------|
| 1. Locker | 20. Hood Screw | 39. Ball Bearing (3x7x3) | 58. "D" Washer |
| 2. Locker Spring | 21. Side Cover Screw | 40. Tension Knob Hexagon Ring | 59. "B" Washer |
| 3. Locker Washer | 22. Frame Screw | 41. Tension Knob "O" Ring | 60. Drive Gear |
| 4. Locker "E" Clip | 23. Frame | 42. Tension Knob BCL Washer | 61. Ratchet Washer |
| 5. Palm Cover | 24. Thumb Bar | 43. Tension Knob Rubber Washer | 62. Ratchet |
| 6. Spool Cover | 25. Thumb Bar Lever | 44. Tension Knob | 63. Crank Shaft |
| 7. Spool Cover Washer | 26. Thumb Bar Screw | 45. Spring Washer | 64. Crank Shaft Gear |
| 8. Ball Bearing (5x11x4) | 27. Release | 46. Ball Bearing (8x14x4) | 65. Crank Shaft Retainer Screw |
| 9. Hexagon Ring | 28. Release Spring | 47. Adjust Washer | 66. Crank Shaft Retainer |
| 10. Spool Cover Screw | 29. Yoke Cam | 48. Clicker Holder | 67. Crank Shaft "E" Clip |
| 11. Brake Ring | 30. Pinion Yoke | 49. Clicker | 68. Ball Bearing (5x9x3) |
| 12. Shoe Guide | 31. Yoke Spring | 50. Star Drag | 69. Line Guide Carrier |
| 13. Brake Shoe | 32. Yoke Cam Spring | 51. Leaf Spring | 70. Pawl |
| 14. Spool Ass'y | 33. Worm Shaft Bush | 52. Handle Ass'y | 71. Pawl Washer |
| 15. Line Guide Bar | 34. Worm Shaft Gear | 53. Handle Nut | 72. Pawl Cap |
| 16. Ball Bearing (5x11x4) | 35. Worm Shaft "E" Clip | 54. Handle Nut Cap | 73. Hood |
| 17. Spool Shaft "O" Ring | 36. Pinion Gear | 55. Handle Nut Cap Screw | 74. Carrier Guide |
| 18. Spool Cover Retainer | 37. Gear Cover | 56. One Way Bearing | 75. Worm Shaft |
| 19. Spool Cover Retainer Screw | 38. Decoration Cap | 57. One Way Sleeve | 76. Worm Shaft "E" Clip |