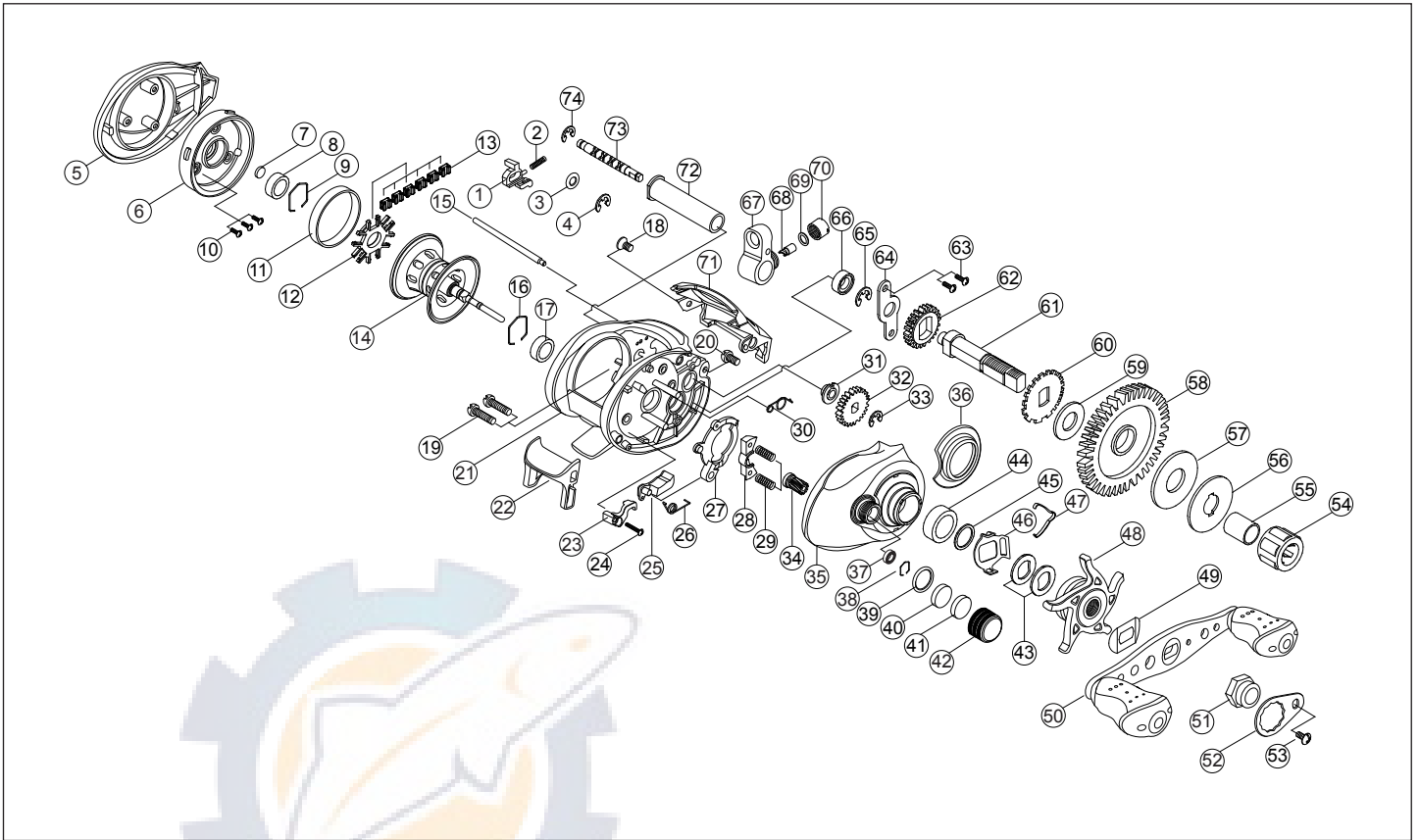


FURY



PART LIST

- | | | | |
|---------------------------|-------------------------------|---------------------------------|--------------------------------|
| 1. Locker | 20. Frame Screw | 39. Tension Knob "O" Ring | 58. Drive Gear |
| 2. Locker Spring | 21. Frame | 40. Tension Knob BCL Washer | 59. Ratchet Washer |
| 3. Locker Washer | 22. Thumb Bar | 41. Tension Knob Rubber Washer | 60. Ratchet |
| 4. Locker "E" Clip | 23. Thumb Bar Lever | 42. Tension Knob | 61. Crank Shaft |
| 5. Palm Cover | 24. Thumb Bar Screw | 43. Spring Washer | 62. Crank Shaft Gear |
| 6. Spool Cover | 25. Release | 44. Ball Bearing (8x14x4) | 63. Crank Shaft Retainer Screw |
| 7. Spool Cover Washer | 26. Release Spring | 45. Adjust Washer | 64. Crank Shaft Retainer |
| 8. Ball Bearing (5x11x4) | 27. Yoke Cam | 46. Clicker Holder | 65. Crank Shaft "E" Clip |
| 9. Hexagon Ring | 28. Pinion Yoke | 47. Clicker | 66. Ball Bearing (5x9x3) |
| 10. Spool Cover Screw | 29. Yoke Spring | 48. Star Drag | 67. Line Guide Carrier |
| 11. Brake Ring | 30. Yoke Cam Spring | 49. Leaf Spring | 68. Pawl |
| 12. Shoe Guide | 31. Worm Shaft Bush | 50. Handle Ass'y | 69. Pawl Washer |
| 13. Brake Shoe | 32. Worm Shaft Gear | 51. Handle Nut | 70. Pawl Cap |
| 14. Spool Ass'y | 33. Worm Shaft "E" Clip | 52. Handle Nut Lock Plate | 71. Hood |
| 15. Line Guide bar | 34. Pinion Gear | 53. Handle Nut Lock Plate Screw | 72. Carrier Guide |
| 16. Hexagon Ring | 35. Gear Cover | 54. One way Bearing | 73. Worm Shaft |
| 17. Ball Bearing (5x11x4) | 36. Decoration Cap | 55. One way Sleeve | 74. Worm Shaft "E" Clip |
| 18. Hood Screw | 37. Ball Bearing (3x7x3) | 56. "D" Washer | |
| 19. Side Cover Screw | 38. Tension Knob Hexagon Ring | 57. "B" Washer | |