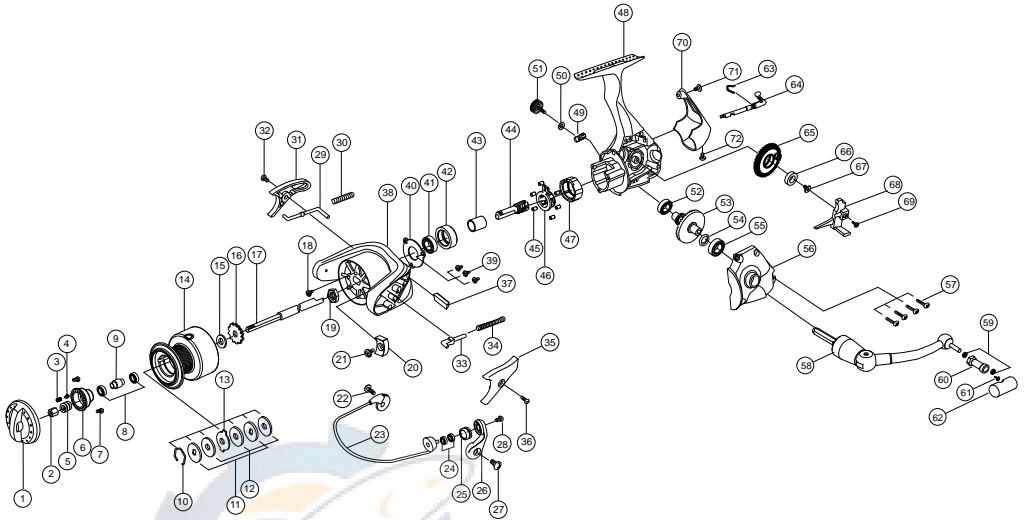


Legacy

Diagram



Part List

No.	Part List	No.	Part List	No.	Part List
1.	Drag Knob	25.	Line Roller	49.	One Way Cam
2.	Drag Nut	26.	Arm Lever	50.	Dust Cover w/s
3.	Drag Click Spring	27.	Arm Lever s/c	51.	Dust Cover
4.	Drag Click Pin	28.	Bail s/c	52.	Ball Bearing 8 x 14 x 4
5.	Drag Coil Spring	29.	Kick Lever	53.	Drive Gear
6.	Drag Under Cap	30.	Kick Lever s/p	54.	Drive Gear Adj. w/s
7.	Drag Under Cap s/c	31.	Kick Lever Cover	55.	Ball Bearing 8 x 14 x 4
8.	Ball Bearing 5 x 9 x 3	32.	Kick Lever Cover s/c	56.	Body Cover
9.	Spool Bush	33.	Bail s/p Holder	57.	Body Cover s/c
10.	Spool Ring	34.	Bail s/p	58.	Handle Assy
11.	Spool "D" w/s	35.	Bail s/p Cover	59.	Ball Bearing 4 x 7 x 2.5
12.	Spool "B" w/s	36.	Bail s/p Cover s/c	60.	Handle Knob Stand
13.	Spool "A" w/s	37.	Side Balance	61.	Handle s/c
14.	Spool Assy	38.	Rotor	62.	Handle Wood Knob
15.	Spool Adj. w/s	39.	Ball Bearing Cover s/c	63.	Stopper Lever s/p
16.	Click Gear	40.	One Way B/B Cover	64.	Stopper Lever
17.	Main Shaft	41.	Ball Bearing 8 x 14 x 4	65.	O/S Gear
18.	Rotor Nut Lock s/c	42.	Ball Bearing Holder	66.	O/S Gear Bushing
19.	Rotor Nut	43.	One Way Sleeve	67.	O/S Gear s/c
20.	Center Balance	44.	Pinion Gear	68.	O/S Slider
21.	Balance s/c	45.	One Way Pin Roller	69.	Main Shaft s/c
22.	Bail Holder s/c	46.	One Way Pin Roller Retainer	70.	Body Rear Cap
23.	Bail Assy	47.	One Way Housing	71.	Body Rear Cap s/c (Top)
24.	Ball Bearing 5 x 8 x 2.5	48.	Body	72.	Body Rear Cap s/c (Bottom)