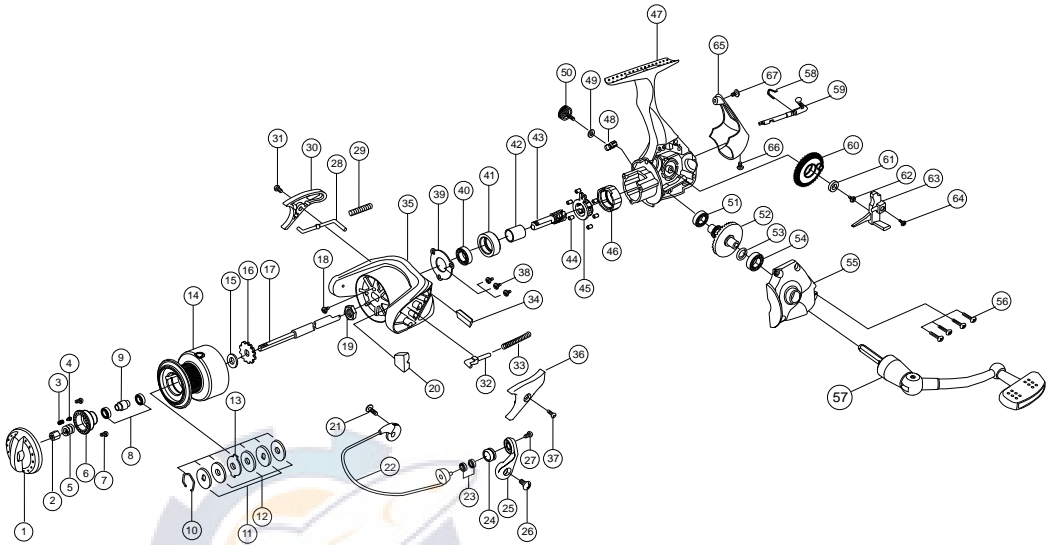


## Diagram



## Part List

No.	Part List	No.	Part List	No.	Part List
1.	Drag Knob	24.	Line Roller	47.	Body
2.	Drag Nut	25.	Arm Lever	48.	One Way Cam
3.	Drag Click Spring	26.	Arm Lever s/c	49.	Dust Cover w/s
4.	Drag Click Pin	27.	Bail s/c	50.	Dust Cover
5.	Drag Coil Spring	28.	Kick Lever	51.	Ball Bearing 8 x 14 x 4
6.	Drag Under Cap	29.	Kick Lever s/p	52.	Drive Gear
7.	Drag Under Cap s/c	30.	Kick Lever Cover	53.	Drive Gear Adj. w/s
8.	Ball Bearing 5 x 9 x 3	31.	Kick Lever Cover s/c	54.	Ball Bearing 8 x 14 x 4
9.	Spool Bush	32.	Bail s/p Holder	55.	Body Cover
10.	Spool Ring	33.	Bail Spring	56.	Body Cover s/c
11.	Spool "D" w/s	34.	Side Balance	57.	Handle Assy
12.	Spool "B" w/s	35.	Rotor	58.	Stopper Lever s/p
13.	Spool "A" w/s	36.	Bail s/p Cover	59.	Stopper Lever
14.	Spool Assy	37.	Bail s/p Cover s/c	60.	O/S Gear
15.	Spool Adj. w/s	38.	Ball Bearing Cover s/c	61.	O/S Gear Bush
16.	Click Gear	39.	One Way B/B Cover	62.	O/S Gear s/c
17.	Main Shaft	40.	Ball Bearing 8 x 14 x 4	63.	O/S Slider
18.	Rotor Nut Lock s/c	41.	Ball Bearing Holder	64.	Main Shaft s/c
19.	Rotor Nut	42.	One Way Sleeve	65.	Body Rear Cap
20.	Centre Balance	43.	Pinion Gear	66.	Body Rear Cap s/c (Bottom)
21.	Bail Holder s/c	44.	One Way Pin Roller	67.	Body Rear Cap s/c (Top)
22.	Bail Assy	45.	One Way Pin Roller Retainer		
23.	Ball Bearing 5 x 8 x 2.5	46.	One Way Housing		