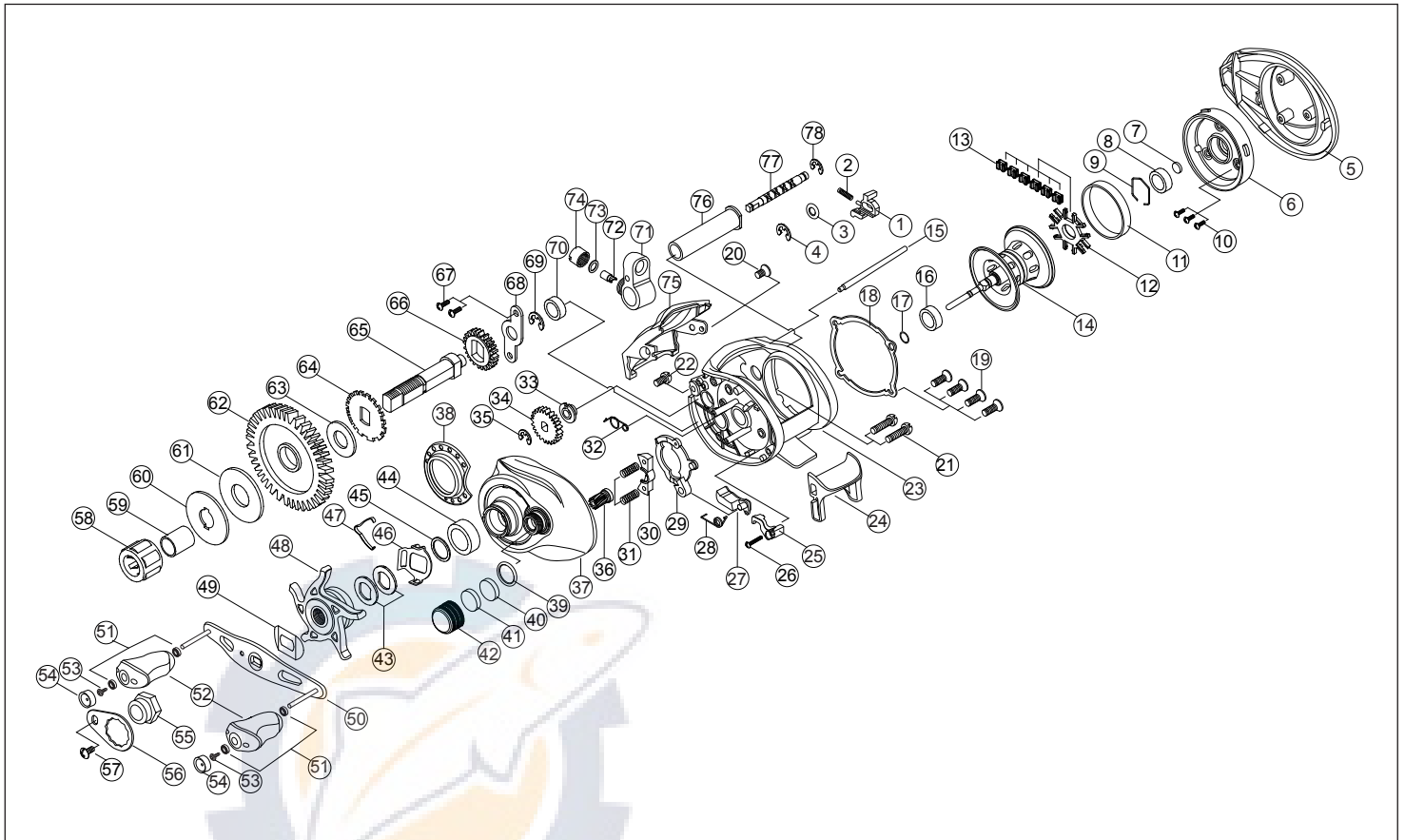


Saga



PART LIST

- | | | | |
|--------------------------------|-----------------------------|---------------------------------|--------------------------------|
| 1. Locker | 21. Side Cover Screw | 41. Tension Knob Rubber Washer | 61. "B" Washer |
| 2. Locker Spring | 22. Frame Screw | 42. Tension Knob | 62. Drive Gear |
| 3. Locker Washer | 23. Frame | 43. Spring Washer | 63. Ratchet Washer |
| 4. Locker "E" Clip | 24. Thumb Bar | 44. Ball Bearing (8x14x4) | 64. Ratchet |
| 5. Palm Cover | 25. Thumb Bar Lever | 45. Adjust Washer | 65. Crank Shaft |
| 6. Spool Cover | 26. Thumb Bar Screw | 46. Clicker Holder | 66. Crank Shaft Gear |
| 7. Spool Cover Washer | 27. Release | 47. Clicker | 67. Crank Shaft Retainer Screw |
| 8. Ball Bearing (5x11x4) | 28. Release Spring | 48. Star Drag | 68. Crank Shaft Retainer |
| 9. Hexagon Ring | 29. Yoke Cam | 49. Leaf Spring | 69. Crank Shaft "E" Clip |
| 10. Spool Cover Screw | 30. Pinion Yoke | 50. Handle Ass'y | 70. Bushing (5x9x3) |
| 11. Brake Ring | 31. Yoke Spring | 51. Ball Bearing (4x7x2.5) | 71. Line Guide Carrier |
| 12. Shoe Guide | 32. Yoke Cam Spring | 52. Handle Knob | 72. Pawl |
| 13. Brake Shoe | 33. Worm Shaft Bush | 53. Handle Rivet Screw | 73. Pawl Washer |
| 14. Spool Ass'y | 34. Worm Shaft Gear | 54. Handle Knob Cap | 74. Pawl Cap |
| 15. Line Guide bar | 35. Worm Shaft "E" Clip | 55. Handle Nut | 75. Hood |
| 16. Ball Bearing (5x11x4) | 36. Pinion Gear | 56. Handle Nut Lock Plate | 76. Carrier Guide |
| 17. "O" Ring | 37. Gear Cover | 57. Handle Nut Lock Plate Screw | 77. Worm Shaft |
| 18. Spool Cover Retainer | 38. Decoration Cap | 58. One way Bearing | 78. Worm Shaft "E" Clip |
| 19. Spool Cover Retainer Screw | 39. Tension Knob "O" Ring | 59. One way Sleeve | |
| 20. Hood Screw | 40. Tension Knob BCL Washer | 60. "D" Washer | |