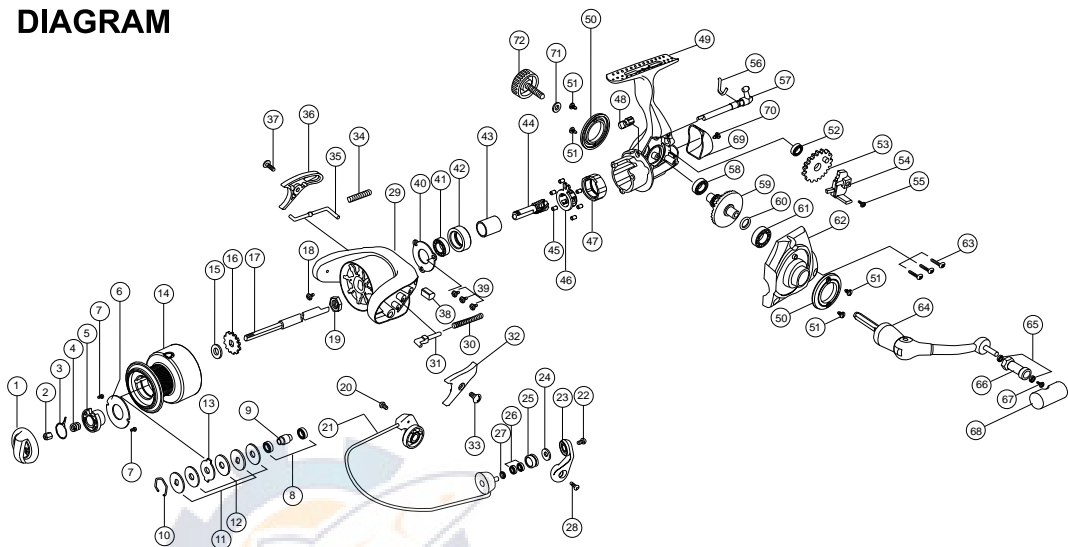




DIAGRAM



PART LIST

No.	Part List	No.	Part List	No.	Part List
1.	Drag Knob	25.	Line Roller	49.	Body
2.	Drag Nut	26.	Ball Bearing 5 x 8 x 2.5	50.	Body Side Cap
3.	Drag Click Claw	27.	Line Roller Bush	51.	Body Side Cap s/c
4.	Drag Coil s/p	28.	Arm Lever s/c	52.	Ball Bearing 5.5 x 10 x 2.5
5.	Front Drag Under Cap	29.	Rotor	53.	O/S Gear
6.	Drag Knob Cover	30.	Bail s/p	54.	O/S Slider
7.	Drag Knob Cover s/c	31.	Bail s/p Holder	55.	Main Shaft s/c
8.	Ball Bearing 5 x 9 x 3	32.	Bail s/p Cover	56.	Stopper Lever s/p
9.	Spool Bush	33.	Bail s/p Cover s/c	57.	Stopper Lever
10.	Spool Ring	34.	Kick Lever s/p	58.	Ball Bearing 7 x 11 x 2.5
11.	Spool "D" w/s	35.	Kick Lever	59.	Drive Gear
12.	Spool "B" w/s	36.	Kick Lever Cover	60.	Drive Gear Adj. w/s
13.	Spool "A" w/s	37.	Kick Lever Cover s/c	61.	Ball Bearing 7 x 13 x 4
14.	Spool Assy	38.	Side Balance	62.	Body Cover
15.	Spool Adj. w/s	39.	Ball Bearing Cover s/c	63.	Body Cover s/c
16.	Click Gear	40.	One Way B/B Cover	64.	Handle Assy
17.	Main Shaft	41.	Ball Bearing 7 x 13 x 4	65.	Ball Bearing 4 x 7 x 2.5
18.	Rotor Nut Lock s/c	42.	Ball Bearing Holder	66.	Handle Knob Stand
19.	Rotor Nut	43.	One Way Sleeve	67.	Handle s/c
20.	Bail Holder s/c	44.	Pinion Gear	68.	Handle Knob Wood
21.	Bail Assy	45.	One Way Pin Roller	69.	Body Rear Cap
22.	Bail s/c	46.	One Way Pin Roller Retainer	70.	Body Rear Cap s/c
23.	Arm Lever	47.	One Way Housing	71.	Dust Cover w/s
24.	Bail w/s	48.	One Way Cam	72.	Dust Cover