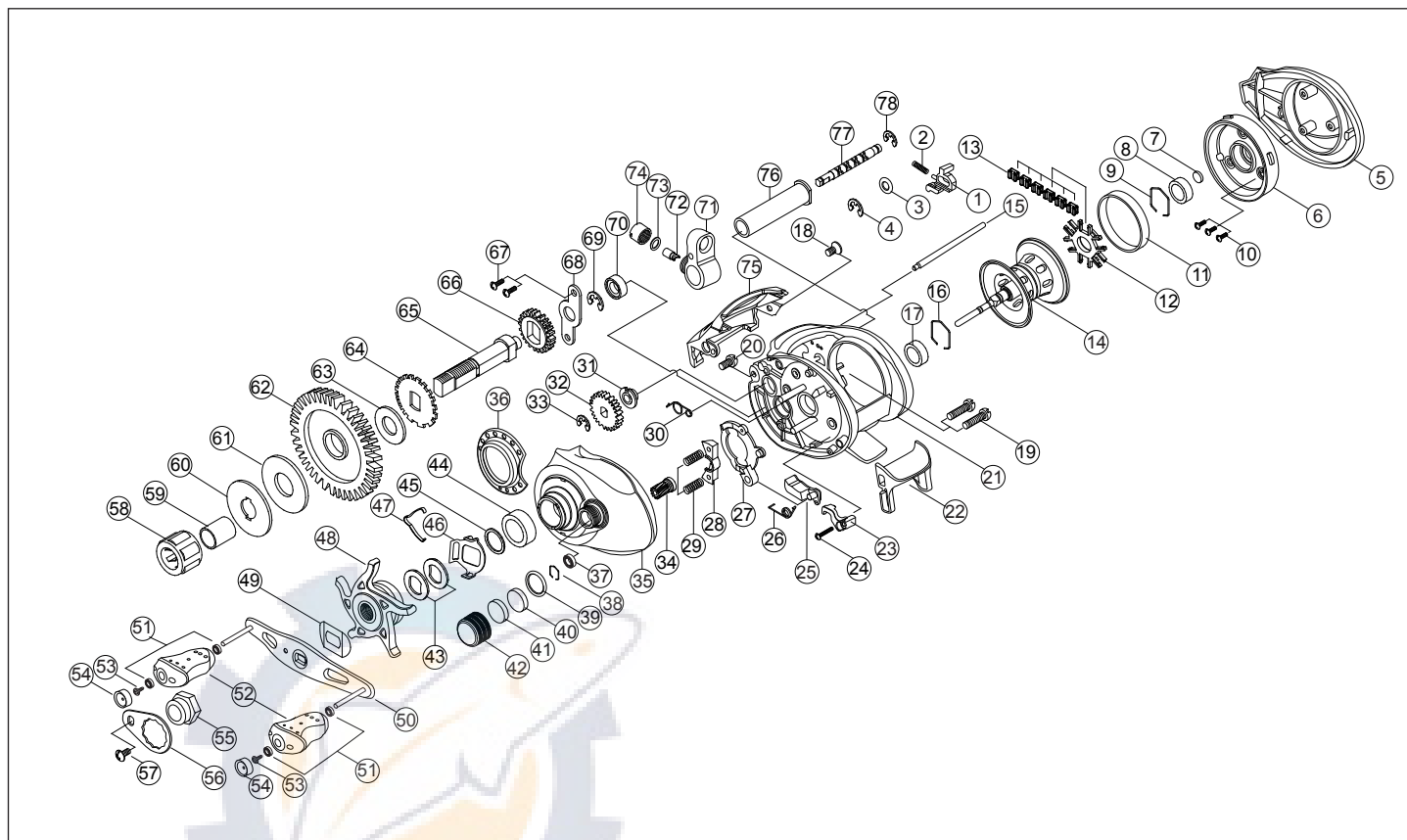


TIRAN



PART LIST

- | | | | | |
|--------------------------|---------------------------|--------------------------------|---------------------------------|--------------------------------|
| 1. Locker | 17. Ball Bearing (5x11x4) | 33. Worm Shaft "E" Clip | 49. Leaf Spring | 65. Crank Shaft |
| 2. Locker Spring | 18. Hood Screw | 34. Pinion Gear | 50. Handle Ass'y | 66. Crank Shaft Gear |
| 3. Locker Washer | 19. Side Cover Screw | 35. Gear Cover | 51. Ball Bearing (4x7x2.5) | 67. Crank Shaft Retainer Screw |
| 4. Locker "E" Clip | 20. Frame Screw | 36. Decoration Cap | 52. Handle Knob | 68. Crank Shaft Retainer |
| 5. Palm Cover | 21. Frame | 37. Ball Bearing (3x7x3) | 53. Handle Rivet Screw | 69. Crank Shaft "E" Clip |
| 6. Spool Cover | 22. Thumb Bar | 38. Tension Knob Hexagon Ring | 54. Handle Knob Cap | 70. Ball Bearing (5x9x3) |
| 7. Spool Cover Washer | 23. Thumb Bar Lever | 39. Tension Knob "O" Ring | 55. Handle Nut | 71. Line Guide Carrier |
| 8. Ball Bearing (5x11x4) | 24. Thumb Bar Screw | 40. Tension Knob BCL Washer | 56. Handle Nut Lock Plate | 72. Pawl |
| 9. Hexagon Ring | 25. Release | 41. Tension Knob Rubber Washer | 57. Handle Nut Lock Plate Screw | 73. Pawl Washer |
| 10. Spool Cover Screw | 26. Release Spring | 42. Tension Knob | 58. One Way Bearing | 74. Pawl Cap |
| 11. Brake Ring | 27. Yoke Cam | 43. Spring Washer | 59. One Way Sleeve | 75. Hood |
| 12. Shoe Guide | 28. Pinion Yoke | 44. Ball Bearing (8x14x4) | 60. "D" Washer | 76. Carrier Guide |
| 13. Brake Shoe | 29. Yoke Spring | 45. Adjust Washer | 61. "B" Washer | 77. Worm Shaft |
| 14. Spool Ass'y | 30. Yoke Cam Spring | 46. Clicker Holder | 62. Drive Gear | 78. Worm Shaft "E" Clip |
| 15. Line Guide Bar | 31. Worm Shaft Bush | 47. Clicker | 63. Ratchet Washer | |
| 16. Hexagon Ring | 32. Worm Shaft Gear | 48. Star Drag | 64. Ratchet | |