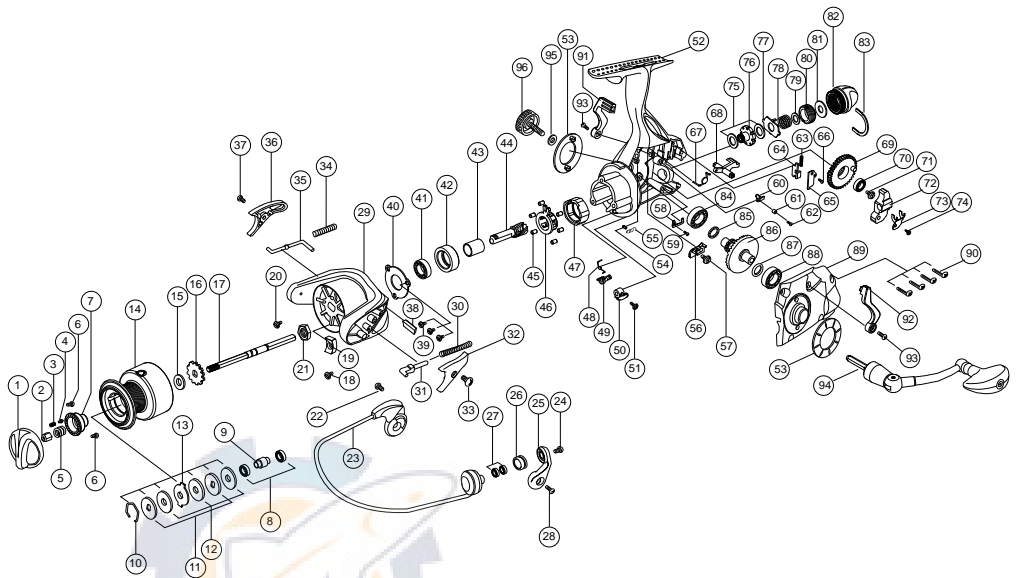


# *tornado*

## DIA GRAM



### PARTS LIST

No.	Part List	No.	Part List	No.	Part List
1.	Drag Knob	33.	Bail s/p Cover s/c	65.	Clutch Cover
2.	Drag Nut	34.	Kick Lever s/p	66.	Clutch Cover s/c
3.	Drag Click Spring	35.	Kick Lever	67.	Yoke Cam s/p
4.	Drag Click Pin	36.	Kick Lever Cover	68.	Yoke Cam
5.	Drag Coil Spring	37.	Kick Lever Cover s/c	69.	O/S Gear
6.	Drag Under Cap s/c	38.	Side Balance	70.	Ball Bearing 5.5 x 10 x 2.5
7.	Drag Under Cap	39.	Ball Bearing Cover s/c	71.	O/S Gear s/c
8.	Ball Bearing 5 x 9 x 3	40.	One Way B/B Cover	72.	O/S Slider
9.	Spool Bush	41.	Ball Bearing 8 x 14 x 4	73.	O/S Slider Stopper
10.	Spool Ring	42.	Ball Bearing Holder	74.	O/S Slider Stopper s/c
11.	Spool "D" w/s	43.	One Way Sleeve	75.	Drag "B" w/s
12.	Spool "B" w/s	44.	Pinion Gear	76.	Main Shaft Holder
13.	Spool "A" w/s	45.	One Way Pin Roller	77.	Drag "A" w/s
14.	Spool Assy	46.	One Way Pin Roller Retainer	78.	Rear Drag Coil s/p
15.	Spool Adj. w/s	47.	One Way Housing	79.	Rear Drag s/p w/s
16.	Click Gear	48.	Stopper Lever s/p	80.	Rear Drag Slider
17.	Main Shaft	49.	Anti Reverse Cam	81.	Rear Drag Knob w/s
18.	Balance s/c	50.	Stopper Lever	82.	Rear Drag Knob
19.	Center Balance	51.	Stopper Lever s/c	83.	Rear Drag Retainer
20.	Rotor Nut Lock s/c	52.	Body	84.	Ball Bearing 8 x 14 x 4
21.	Rotor Nut	53.	Body Side Cap	85.	Drive Gear Collar
22.	Bail Holder s/c	54.	Release Cam s/p Holder	86.	Drive Gear
23.	Bail Assy	55.	Release Cam s/p	87.	Drive Gear Adj. w/s
24.	Bail s/c	56.	Release Cam	88.	Ball Bearing 8 x 14 x 4
25.	Arm Lever	57.	Release Cam s/c	89.	Body Cover Assy
26.	Line Roller	58.	Back Click Claw	90.	Body Cover s/c
27.	Ball Bearing 5 x 8 x 2.5	59.	Back Click Claw s/c	91.	Bait Lever (R)
28.	Arm Lever s/c	60.	Yoke Reverse Cam	92.	Bait Lever (L)
29.	Rotor	61.	Yoke Reverse Cam Bush	93.	Bait Lever s/c
30.	Bail s/p	62.	Yoke Reverse Cam s/c	94.	Handle Assy
31.	Bail s/p Holder	63.	Clutch s/p	95.	Dust Cover w/s
32.	Bail s/p Cover	64.	Clutch	96.	Dust Cover