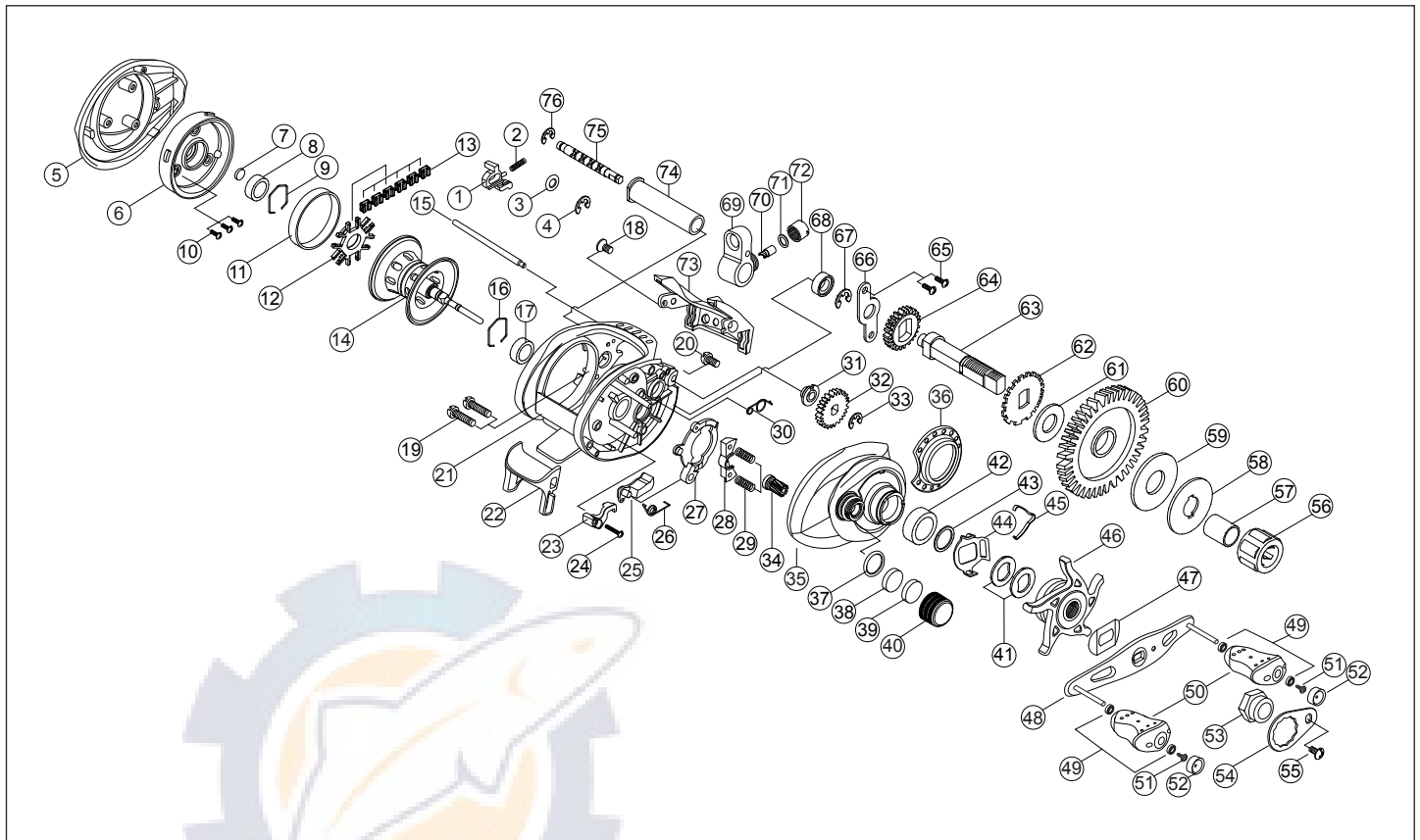


**TROY**



**Part List**

- |                           |                             |                                 |                                |
|---------------------------|-----------------------------|---------------------------------|--------------------------------|
| 1. Locker                 | 20. Frame Screw             | 39. Tension Knob Rubber Washer  | 58. "D" Washer                 |
| 2. Locker Spring          | 21. Frame                   | 40. Tension Knob                | 59. "B" Washer                 |
| 3. Locker Washer          | 22. Thumb Bar               | 41. Spring Washer               | 60. Drive Gear                 |
| 4. Locker "E" Clip        | 23. Thumb Bar Lever         | 42. Ball Bearing (8x14x4)       | 61. Ratchet Washer             |
| 5. Palm Cover             | 24. Thumb Bar Screw         | 43. Adjust Washer               | 62. Ratchet                    |
| 6. Spool Cover            | 25. Release                 | 44. Clicker Holder              | 63. Crank Shaft                |
| 7. Spool Cover Washer     | 26. Release Spring          | 45. Clicker                     | 64. Crank Shaft Gear           |
| 8. Ball Bearing (5x11x4)  | 27. Yoke Cam                | 46. Star Drag                   | 65. Crank Shaft Retainer Screw |
| 9. Hexagon Ring           | 28. Pinion Yoke             | 47. Leaf Spring                 | 66. Crank Shaft Retainer       |
| 10. Spool Cover Screw     | 29. Yoke Spring             | 48. Handle Ass'y                | 67. Crank Shaft "E" Clip       |
| 11. Brake Ring            | 30. Yoke Cam Spring         | 49. Ball Bearing (4x7x2.5)      | 68. Ball Bearing (5x9x3)       |
| 12. Shoe Guide            | 31. Worm Shaft Bush         | 50. Handle Knob                 | 69. Line Guide Carrier         |
| 13. Brake Shoe            | 32. Worm Shaft Gear         | 51. Handle Rivet Screw          | 70. Pawl                       |
| 14. Spool Ass'y           | 33. Worm Shaft "E" Clip     | 52. Handle Knob Cap             | 71. Pawl Washer                |
| 15. Line Guide Bar        | 34. Pinion Gear             | 53. Handle Nut                  | 72. Pawl Cap                   |
| 16. Hexagon Ring          | 35. Gear Cover              | 54. Handle Nut Lock Plate       | 73. Hood                       |
| 17. Ball Bearing (5x11x4) | 36. Decoration Cap          | 55. Handle Nut Lock Plate Screw | 74. Carrier Guide              |
| 18. Hood Screw            | 37. Tension Knob "O" Ring   | 56. One Way Bearing             | 75. Worm Shaft                 |
| 19. Side Cover Screw      | 38. Tension Knob BCL Washer | 57. One Way Sleeve              | 76. Worm Shaft "E" Clip        |