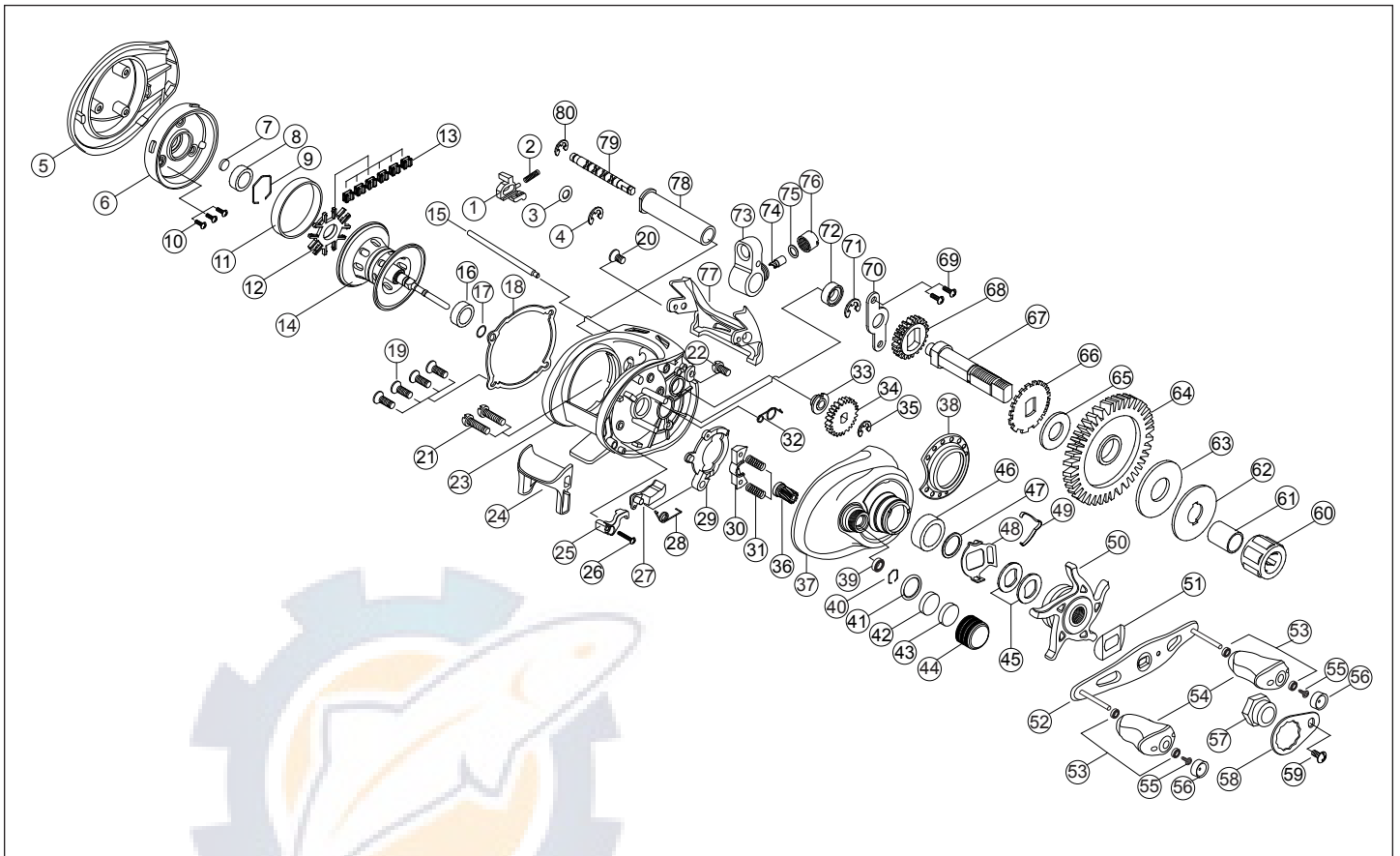


Vio



PART LIST

- | | | | |
|--------------------------------|-------------------------------|---------------------------------|--------------------------------|
| 1. Locker | 21. Side Cover Screw | 41. Tension Knob "O" Ring | 61. One way Sleeve |
| 2. Locker Spring | 22. Frame Screw | 42. Tension Knob BCL Washer | 62. "D" Washer |
| 3. Locker Washer | 23. Frame | 43. Tension Knob Rubber Washer | 63. "B" Washer |
| 4. Locker "E" Clip | 24. Thumb Bar | 44. Tension Knob | 64. Drive Gear |
| 5. Palm Cover | 25. Thumb Bar Lever | 45. Spring Washer | 65. Ratchet Washer |
| 6. Spool Cover | 26. Thumb Bar Screw | 46. Ball Bearing (8x14x4) | 66. Ratchet |
| 7. Spool Cover Washer | 27. Release | 47. Adjust Washer | 67. Crank Shaft |
| 8. Ball Bearing (5x11x4) | 28. Release Spring | 48. Clicker Holder | 68. Crank Shaft Gear |
| 9. Hexagon Ring | 29. Yoke Cam | 49. Clicker | 69. Crank Shaft Retainer Screw |
| 10. Spool Cover Screw | 30. Pinion Yoke | 50. Star Drag | 70. Crank Shaft Retainer |
| 11. Brake Ring | 31. Yoke Spring | 51. Leaf Spring | 71. Crank Shaft "E" Clip |
| 12. Shoe Guide | 32. Yoke Cam Spring | 52. Handle Ass'y | 72. Ball Bearing (5x9x3) |
| 13. Brake Shoe | 33. Worm Shaft Bush | 53. Ball Bearing (4x7x2.5) | 73. Line Guide Carrier |
| 14. Spool Ass'y | 34. Worm Shaft Gear | 54. Handle Knob | 74. Pawl |
| 15. Line Guide bar | 35. Worm Shaft "E" Clip | 55. Handle Rivet Screw | 75. Pawl Washer |
| 16. Ball Bearing (5x11x4) | 36. Pinion Gear | 56. Handle Knob Cap | 76. Pawl Cap |
| 17. "O" Ring | 37. Gear Cover | 57. Handle Nut | 77. Hood |
| 18. Spool Cover Retainer | 38. Decoration Cap | 58. Handle Nut Lock Plate | 78. Carrier Guide |
| 19. Spool Cover Retainer Screw | 39. Ball Bearing (3x7x3) | 59. Handle Nut Lock Plate Screw | 79. Worm Shaft |
| 20. Hood Screw | 40. Tension Knob Hexagon Ring | 60. One way Bearing | 80. Worm Shaft "E" Clip |