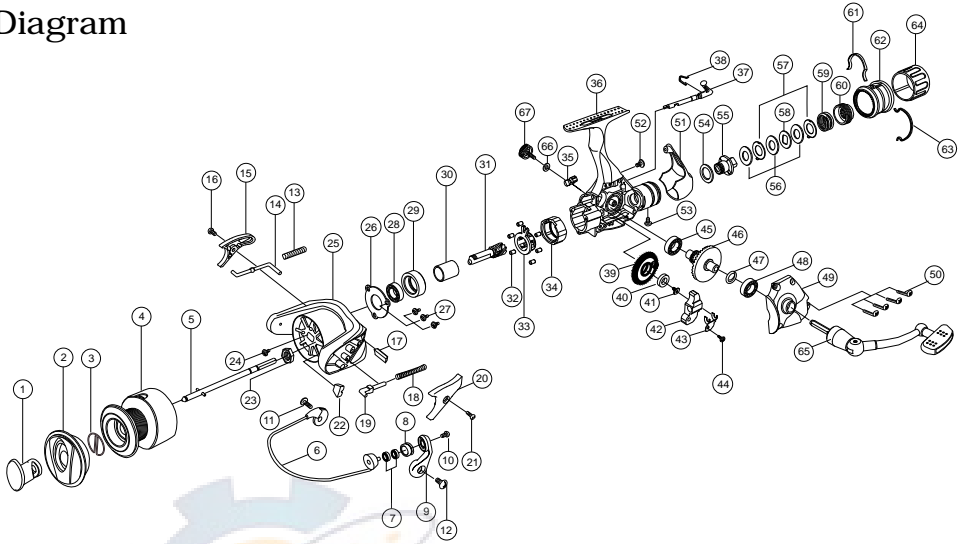


VISTA

Diagram



PARTS LIST

| | | |
|-----------------------------|------------------------------------|--------------------------------|
| 1. Button | 24. Rotor Nut s/c | 47. Drive Gear Adjust Washer |
| 2. Spool Cap | 25. Rotor | 48. Ball Bearing 8 x 14 x 4 |
| 3. Button s/p | 26. One Way Ball Bearing Cover | 49. Body Cover Assy |
| 4. Spool Assy | 27. One Way Ball Bearing Cover s/c | 50. Body Cover s/c |
| 5. Main Shaft | 28. Ball Bearing 8 x 14 x 4 | 51. Body Rear Cap |
| 6. Bail Assy | 29. One Way Ball Bearing Holder | 52. Body Rear Cap s/c (Top) |
| 7. Ball Bearing 5 x 8 x 2.5 | 30. One Way Sleeve | 53. Body Rear Cap s/c (Bottom) |
| 8. Line Roller | 31. Pinion Gear | 54. Drag "C" Washer |
| 9. Arm Lever | 32. One Way Pin Roller | 55. Main Shaft Holder |
| 10. Bail s/c | 33. One Way Retainer | 56. Drag "B" Washer |
| 11. Bail Holder s/c | 34. One Way Housing | 57. Drag "A" Washer |
| 12. Arm Lever s/c | 35. One Way Cam | 58. Drag "D" Washer |
| 13. Kick Lever s/p | 36. Body | 59. Drag Coil s/p |
| 14. Kick Lever | 37. Stopper Lever | 60. Rear Drag Slider |
| 15. Kick Lever Cover | 38. Stopper Lever s/p | 61. Rear Drag Slider Retainer |
| 16. Kick Lever Cover s/c | 39. Oscillation Gear | 62. Rear Drag Knob |
| 17. Side Balance | 40. Oscillation Gear Bush | 63. Rear Drag Knob Retainer |
| 18. Bail s/p | 41. Oscillation Gear s/c | 64. Rear Drag Knob Cover |
| 19. Bail s/p holder | 42. Oscillation Slider | 65. Handle Assy |
| 20. Bail s/p cover | 43. Oscillation Slider Stopper | 66. Dust Cover Washer |
| 21. Bail s/p cover s/c | 44. Oscillation Slider stopper s/c | 67. Dust Cover |
| 22. Center Balance | 45. Ball Bearing 8 x 14 x 4 | |
| 23. Rotor Nut | 46. Drive Gear | |